

Anti-CREB5 Polyclonal Antibody

Product Details

Ig Type: IgG
Reactivity: Human, Mouse (predicted: Rat, Chicken, Dog, Cow, Horse)
Molecular Weight: Theoretical: 57 kDa. Actual: 60 kDa.
Purification: Protein A purified

Applications

1. Paraformaldehyde-fixed, paraffin embedded (Mouse brain); Antigen retrieval by boiling in sodium citrate buffer (pH6.0) for 15 min; Block endogenous peroxidase by 3% hydrogen peroxide for 20 min; Blocking buffer (normal goat serum) at 37°C for 30 min; Antibody incubation with (CREB5) Polyclonal Antibody, Unconjugated (TMAB-00480) at 1:400 overnight at 4°C, followed by operating according to SP Kit (Rabbit) instructions and DAB staining.

2. Sample:

Lane 1: Human HeLa cell lysates

Lane 2: Human HepG2 cell lysates

Lane 3: Human MCF-7 cell lysates

Verified Activity:

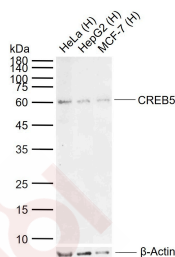
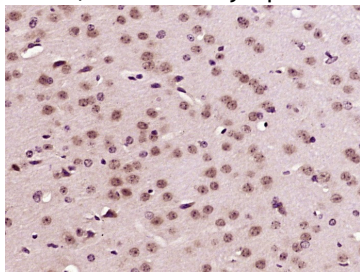
Primary: Anti-CREB5 (TMAB-00480) at 1/1000 dilution

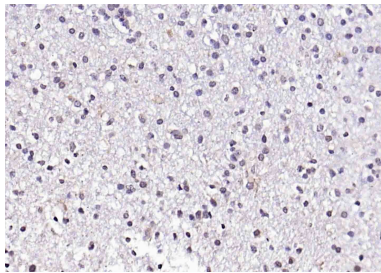
Secondary: IRDye800CW Goat Anti-Rabbit IgG at 1/20000 dilution

Predicted band size: 57 kDa

Observed band size: 60 kDa

3. Paraformaldehyde-fixed, paraffin embedded (human glioma); Antigen retrieval by boiling in sodium citrate buffer (pH6.0) for 15 min; Block endogenous peroxidase by 3% hydrogen peroxide for 20 min; Blocking buffer (normal goat serum) at 37°C for 30 min; Antibody incubation with (CREB5) Polyclonal Antibody, Unconjugated (TMAB-00480) at 1:200 overnight at 4°C, followed by operating according to SP Kit (Rabbit) instructions and DAB staining.





Application: IF,IHC-Fr,IHC-P,WB

Recommended WB: 1:500-2000; IHC-P: 1:100-500; IHC-Fr: 1:100-500; IF: 1:100-500

Properties

Stability & Storage: Store at -20°C or -80°C for 12 months. Avoid repeated freeze-thaw cycles.

Shipping: Shipping with blue ice.

Antigen Details

Immunogen: KLH conjugated synthetic peptide: human CREB5

Antigen Species: Human

Gene ID: 9586

Uniprot ID: Q02930

Synonyms: CRE-BPa;Creb5;Cyclic AMP-responsive element-binding protein 5;CREB-5;cAMP-responsive element-binding protein 5

Biology Area: Zinc Finger

Research Background

The product of this gene belongs to the CRE (cAMP response element)-binding protein family. Members of this family contain zinc-finger and bZIP DNA-binding domains. The encoded protein specifically binds to CRE as a homodimer or a heterodimer with c-Jun or CRE-BP1, and functions as a CRE-dependent trans-activator. Alternatively spliced transcript variants encoding different isoforms have been identified. [provided by RefSeq, Jul 2008]

Inhibitor · Natural Compounds · Compound Libraries · Recombinant Proteins

This product is for Research Use Only · Not for Human or Veterinary or Therapeutic Use

Tel:781-999-4286 E_mail:info@targetmol.com Address:34 Washington Street,Wellesley Hills,MA 02481
