

Anti-CREB1 Polyclonal Antibody

Product Details

Ig Type:	IgG
Reactivity:	Human, Mouse (predicted: Rat, Chicken, Dog, Pig, Cow, Sheep)
Molecular Weight:	Theoretical: 37 kDa. Actual: 37 kDa.
Purification:	Protein A purified

Applications

1. Sample:
 293t (Human) Cell Lysate at 30 µg
 Primary: Anti-CREB-1 (TMAB-00479) at 1/300 dilution
 Secondary: IRDye800CW Goat Anti-Rabbit IgG at 1/20000 dilution
 Predicted band size: 37 kDa
 Observed band size: 37 kDa

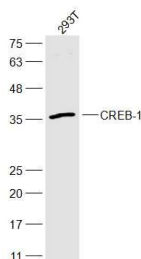
2. Tissue/cell: human cervical carcinoma; 4% Paraformaldehyde-fixed and paraffin-embedded;

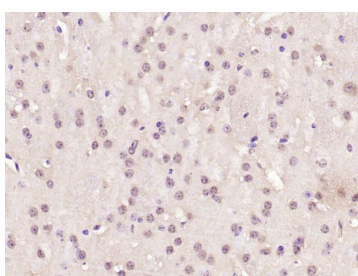
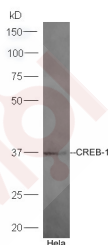
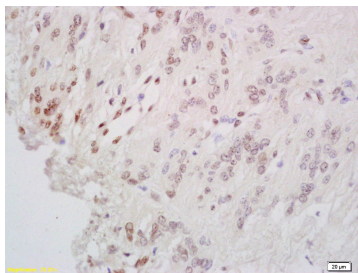
Antigen retrieval: citrate buffer (0.01M, pH6.0), Boiling bathing for 15 min; Block endogenous peroxidase by 3% Hydrogen peroxide for 30 min; Blocking buffer (normal goat serum) at 37°C for 20 min;

Verified Activity: Incubation: Anti-CREB-1 Polyclonal Antibody, Unconjugated (TMAB-00479) 1:200, overnight at 4°C, followed by conjugation to the secondary antibody and DAB staining.

3. Sample: Hela Cell Lysate at 40 µg
 Primary: Anti-CREB-1 (TMAB-00479) at 1:300 dilution;
 Secondary: HRP conjugated Goat-Anti-rabbit Igg (secondary antibody) at 1: 5000 dilution;
 Predicted band size: 37 kDa
 Observed band size: 37 kDa

4. Paraformaldehyde-fixed, paraffin embedded (mouse brain); Antigen retrieval by boiling in sodium citrate buffer (pH6.0) for 15 min; Block endogenous peroxidase by 3% hydrogen peroxide for 20 min; Blocking buffer (normal goat serum) at 37°C for 30 min; Antibody incubation with (CREB-1) Polyclonal Antibody, Unconjugated (TMAB-00479) at 1:200 overnight at 4°C, followed by operating according to SP Kit (Rabbit) instructions and DAB staining.





Application: IF,IHC-Fr,IHC-P,WB

Recommended WB: 1:500-2000; IHC-P: 1:100-500; IHC-Fr: 1:100-500; IF: 1:100-500

Properties

Stability & Storage: Store at -20°C or -80°C for 12 months. Avoid repeated freeze-thaw cycles.

Shipping: Shipping with blue ice.

Antigen Details

Immunogen: KLH conjugated synthetic peptide: human CREB-1

Antigen Species: Human

Gene ID: 1385

Uniprot ID: P16220

Synonyms: CREB1;CREB-1;Cyclic AMP-responsive element-binding protein 1;cAMP-responsive element-binding protein 1

Biology Area: HLH / Leucine Zipper,Transcription Factors,TLR Signaling

Research Background

The ATF/CREB family consists of transcription factors that function through binding to the cAMP responsive element (CRE) palindromic octanucleotide, TGACCTCA. The best characterized members of this gene family include CREB-1, CREB-2, ATF-1,ATF-2,ATF-3and ATF-4. these transcription factors share highly-related COOH terminal leucine zipper dimerization and basic DNA bindings but are highly divergent in their amino terminal domains. Although each of the ATF/CREB proteins bind CREs in their homodimeric form, in certain instances they also bind as heterodimers, both within the ATF/CREB family and with members of the AP-1 transcription factor family. It has recently been shown that protein kinase A-mediated CREB phosphorylation results in its binding to a 265kDa nuclear protein designated CBP (CREB-binding protein), which may represent a CREB co-activator.

Inhibitor · Natural Compounds · Compound Libraries · Recombinant Proteins

This product is for Research Use Only · Not for Human or Veterinary or Therapeutic Use

Tel:781-999-4286 E_mail:info@targetmol.com Address:34 Washington Street,Wellesley Hills,MA 02481