

Anti-CREB1 Antibody (3J147)

Product Details

Ig Type:	IgG
Reactivity:	Human,Mouse
Molecular Weight:	Theoretical: 37 kDa. Actual: 42 kDa.
Clone:	3J147
Purification:	Protein G purified

Applications

1. Paraformaldehyde-fixed, paraffin embedded (mouse embryos tissue); Antigen retrieval by boiling in sodium citrate buffer (pH6.0) for 15 min; Block endogenous peroxidase by 3% hydrogen peroxide for 20 min; Blocking buffer (normal goat serum) at 37°C for 30 min; Antibody incubation with (CREB-1) Monoclonal Antibody, Unconjugated (ascites of TMAB-00478) at 1:2000 overnight at 4°C, followed by a conjugated secondary for 20 min and DAB staining.

2. Sample:

Jurkat (Human) Cell Lysate at 30 µg

Huvec (Human) Cell Lysate at 30 µg

U2os (Human) Cell Lysate at 30 µg

Primary: Anti-CREB-1 (TMAB-00478) at 1/1000 dilution

Secondary: IRDye800CW Goat Anti-Mouse IgG at 1/20000 dilution

Predicted band size: 45 kDa

Observed band size: 43 kDa

Verified Activity:

3. Paraformaldehyde-fixed, paraffin embedded (Mouse brain); Antigen retrieval by boiling in sodium citrate buffer (pH6.0) for 15 min; Block endogenous peroxidase by 3% hydrogen peroxide for 20 min; Blocking buffer (normal goat serum) at 37°C for 30 min; Antibody incubation with (CREB-1) Monoclonal Antibody, Unconjugated (ascites of TMAB-00478) at 1:2000 overnight at 4°C, followed by operating according to SP Kit (Mouse) instructions and DAB staining.

4. Paraformaldehyde-fixed, paraffin embedded (mouse brain tissue); Antigen retrieval by boiling in sodium citrate buffer (pH6.0) for 15 min; Block endogenous peroxidase by 3% hydrogen peroxide for 20 min; Blocking buffer (normal goat serum) at 37°C for 30 min; Antibody incubation with (CREB-1) Monoclonal Antibody, Unconjugated (ascites of TMAB-00478) at 1:2000 overnight at 4°C, followed by a conjugated secondary for 20 min and DAB staining.

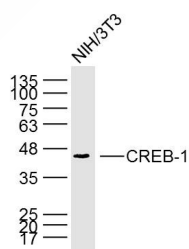
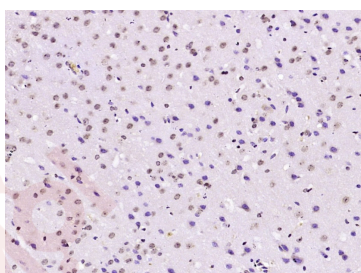
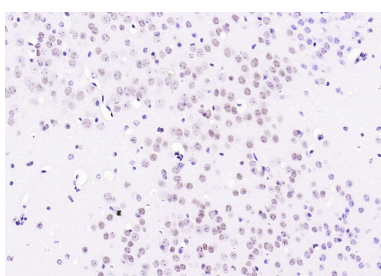
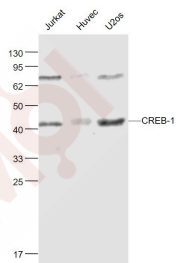
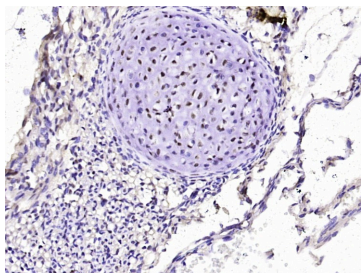
5. Sample: NIH/3T3 Cell (Mouse) Lysate at 40 µg

Primary: Anti-CREB-1 (TMAB-00478) at 1/1000 dilution

Secondary: IRDye800CW Goat Anti-Mouse IgG at 1/20000 dilution

Predicted band size: 37 kDa

Observed band size: 45 kDa



Application: IF,IHC-Fr,IHC-P,WB

Recommended WB: 1:500-1000; IHC-P: 1:100-500; IHC-Fr: 1:100-500; IF: 1:100-500

Properties

Stability & Storage: Store at -20°C or -80°C for 12 months. Avoid repeated freeze-thaw cycles.

Shipping: Shipping with blue ice.

Antigen Details

Immunogen:	Recombinant Protein: human CREB-1
Antigen Species:	Human
Gene ID:	1385
Uniprot ID:	P16220
Synonyms:	CREB-1;Cyclic AMP-responsive element-binding protein 1;CREB1;cAMP-responsive element-binding protein 1
Biology Area:	HLH / Leucine Zipper,Transcription Factors,TLR Signaling

Research Background

The ATF/CREB family consists of transcription factors that function through binding to the cAMP responsive element (CRE) palindromic octanucleotide, TGACCTCA. The best characterized members of this gene family include CREB-1, CREB-2, ATF-1,ATF-2,ATF-3and ATF-4. these transcription factors share highly-related COOH terminal leucine zipper demerization and basic DNA bindings but are highly divergent in their amino terminal domains. Although each of the ATF/CREB proteins bind CREs in their homodimeric form, in certain instances they also bind as heterodimers, both within the ATF/CREB family and with members of the AP-1 transcription factor family. It has recently been shown that protein kinase A-mediated CREB phosphorylation results in its binding to a 265kDa nuclear protein designated CBP (CREB-binding protein), which may represent a CREB co-activator.

Inhibitor · Natural Compounds · Compound Libraries · Recombinant Proteins

This product is for Research Use Only · Not for Human or Veterinary or Therapeutic Use

Tel:781-999-4286 E_mail:info@targetmol.com Address:34 Washington Street,Wellesley Hills,MA 02481