

Anti-CRB2 Polyclonal Antibody

Product Details

Ig Type:	IgG
Reactivity:	Mouse,Rat (predicted:Human)
Molecular Weight:	Theoretical: 100, 123, 131 kDa. Actual: 100-135 kDa.
Purification:	Protein A purified

Applications

1. Paraformaldehyde-fixed, paraffin embedded (Mouse brain); Antigen retrieval by boiling in sodium citrate buffer (pH6.0) for 15 min; Block endogenous peroxidase by 3% hydrogen peroxide for 20 min; Blocking buffer (normal goat serum) at 37°C for 30 min; Antibody incubation with (CRB2) Polyclonal Antibody, Unconjugated (TMAB-00476) at 1:400 overnight at 4°C, followed by operating according to SP Kit (Rabbit) instructions and DAB staining.

2. Sample:

Eye (Rat) Lysate at 40 µg

Primary: Anti-CRB2 (TMAB-00476) at 1/1000 dilution

Secondary: IRDye800CW Goat Anti-Rabbit IgG at 1/20000 dilution

Predicted band size: 100/123/131 kDa

Observed band size: 135 kDa

3. Sample:

Cerebrum (Mouse) Lysate at 40 µg

Primary: Anti-CRB2 (TMAB-00476) at 1/1000 dilution

Verified Activity: Secondary: IRDye800CW Goat Anti-Rabbit IgG at 1/20000 dilution

Predicted band size: 100, 123, 131 kDa

Observed band size: 100,131 kDa

4. Tissue/cell: rat brain tissue; 4% Paraformaldehyde-fixed and paraffin-embedded;

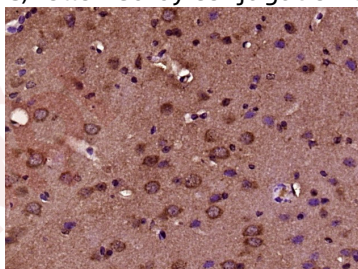
Antigen retrieval: citrate buffer (0.01M, pH6.0), Boiling bathing for 15 min; Block endogenous peroxidase by 3% Hydrogen peroxide for 30 min; Blocking buffer (normal goat serum) at 37°C for 20 min;

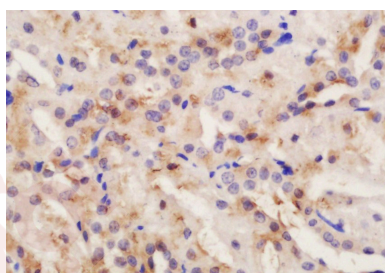
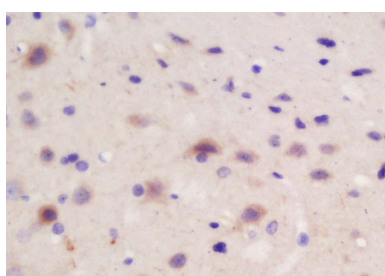
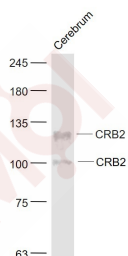
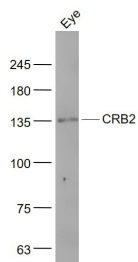
Incubation: Anti-CRB2 Polyclonal Antibody, Unconjugated (TMAB-00476) 1:200, overnight at 4°C, followed by conjugation to the secondary antibody and DAB staining.

5. Tissue/cell: rat kidney tissue; 4% Paraformaldehyde-fixed and paraffin-embedded;

Antigen retrieval: citrate buffer (0.01M, pH6.0), Boiling bathing for 15 min; Block endogenous peroxidase by 3% Hydrogen peroxide for 30 min; Blocking buffer (normal goat serum) at 37°C for 20 min;

Incubation: Anti-CRB2 Polyclonal Antibody, Unconjugated (TMAB-00476) 1:200, overnight at 4°C, followed by conjugation to the secondary antibody and DAB staining.





Application: IF, IHC-Fr, IHC-P, WB

Recommended WB: 1:500-2000; IHC-P: 1:100-500; IHC-Fr: 1:100-500; IF: 1:100-500

Properties

Stability & Storage: Store at -20°C or -80°C for 12 months. Avoid repeated freeze-thaw cycles.

Shipping: Shipping with blue ice.

Antigen Details

Immunogen: KLH conjugated synthetic peptide: human CRB2

Antigen Species: Human

Gene ID: 286204

Uniprot ID: Q5IJ48

Synonyms: Crumbs homolog 2; Crumbs homolog 2 (Drosophila); CRUM2; Crb2; Crumbs-like protein 2; RP11-230L22.2

Biology Area: Other Antibodies

Research Background

CRB2 is a 1,285 amino acid protein that contains three laminin G-like domains and 15 EGF-like domains and exists as multiple alternatively spliced isoforms that are either secreted or membrane bound. Expressed in kidney and retina, as well as in fetal eye and brain, CRB2 is thought to play a role in the morphogenesis of polarized cells and may be involved in DNA repair. Defects in the gene encoding CRB2 are associated with the pathogenesis of autosomal recessive retinitis pigmentosa (RP) and Leber congenital amaurosis (LCA), the former of which refers to a group of diseases that lead to the degeneration of retinal photoreceptor cells, ultimately resulting in a loss of vision. The gene encoding CRB2 maps to human chromosome 9, which houses over 900 genes and comprises nearly 4% of the human genome.

Inhibitor · Natural Compounds · Compound Libraries · Recombinant Proteins

This product is for Research Use Only · Not for Human or Veterinary or Therapeutic Use

Tel:781-999-4286 E_mail:info@targetmol.com Address:34 Washington Street,Wellesley Hills,MA 02481