

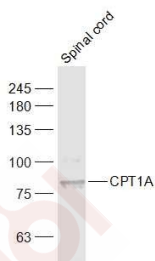
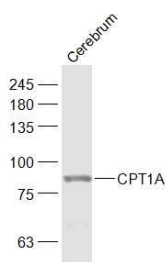
Anti-CPT1A Polyclonal Antibody 2

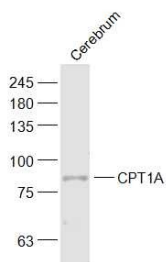
Product Details

Ig Type:	IgG
Reactivity:	Mouse,Rat (predicted:Human,Chicken,Dog,Pig,Cow)
Molecular Weight:	Theoretical: 86 kDa.
Purification:	Protein A purified

Applications

Verified Activity:	1. Sample:
	Cerebrum (Mouse) Lysate at 40 µg
	Primary: Anti-CPT1A (TMAB-00475) at 1/1000 dilution
	Secondary: IRDye800CW Goat Anti-Rabbit IgG at 1/20000 dilution
	Predicted band size: 86 kDa
	Observed band size: 86 kDa
	2. Sample:
	Spinal cord (Mouse) Lysate at 40 µg
	Primary: Anti-CPT1A (TMAB-00475) at 1/1000 dilution
Secondary: IRDye800CW Goat Anti-Rabbit IgG at 1/20000 dilution	
Predicted band size: 86 kDa	
Observed band size: 86 kDa	
3. Sample:	
Cerebrum (Rat) Lysate at 40 µg	
Primary: Anti-CPT1A (TMAB-00475) at 1/1000 dilution	
Secondary: IRDye800CW Goat Anti-Rabbit IgG at 1/20000 dilution	
Predicted band size: 86 kDa	
Observed band size: 86 kDa	





Application: WB

Recommended WB: 1:500-2000

Properties

Stability & Storage: Store at -20°C or -80°C for 12 months. Avoid repeated freeze-thaw cycles.

Shipping: Shipping with blue ice.

Antigen Details

Immunogen: KLH conjugated synthetic peptide: human CPT1A

Antigen Species: Human

Gene ID: 1374

Uniprot ID: P50416

Synonyms: carnitine palmitoyl transferase 1; CPT1A; CPT I; Carnitine palmitoyltransferase 1A; CPT1-L; CPT 1; CPTI-L; Carnitine O-palmitoyltransferase 1, liver isoform

Biology Area: Metabolism of lipids and lipoproteins, Metabolism, Fatty acids, Lipid metabolism, Mitochondrial markers, Fatty acid oxidation, Obesity, Lipid metabolism, Mitochondrial, Mitochondria

Research Background

The mitochondrial oxidation of long-chain fatty acids is initiated by the sequential action of carnitine palmitoyltransferase I (which is located in the outer membrane and is detergent-labile) and carnitine palmitoyltransferase II (which is located in the inner membrane and is detergent-stable), together with a carnitine-acylcarnitine translocase. CPT I is the key enzyme in the carnitine-dependent transport across the mitochondrial inner membrane and its deficiency results in a decreased rate of fatty acid beta-oxidation. Alternatively spliced transcript variants encoding different isoforms have been found for this gene. [provided by RefSeq, Jul 2008].

Inhibitor · Natural Compounds · Compound Libraries · Recombinant Proteins

This product is for Research Use Only · Not for Human or Veterinary or Therapeutic Use

Tel: 781-999-4286 E_mail: info@targetmol.com Address: 34 Washington Street, Wellesley Hills, MA 02481