

## Anti-CPT1A Polyclonal Antibody

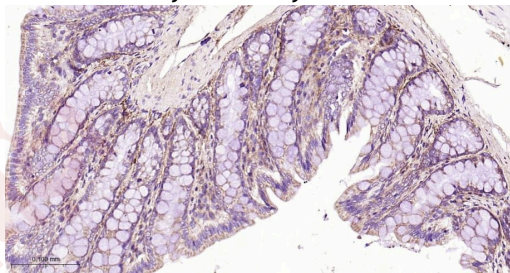
### Product Details

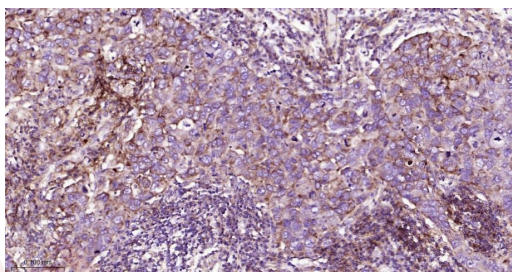
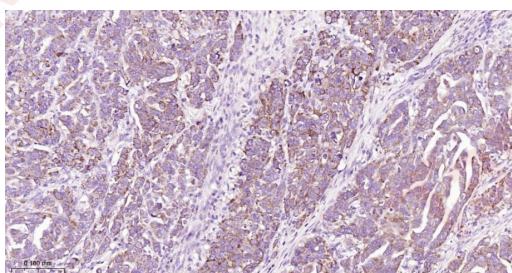
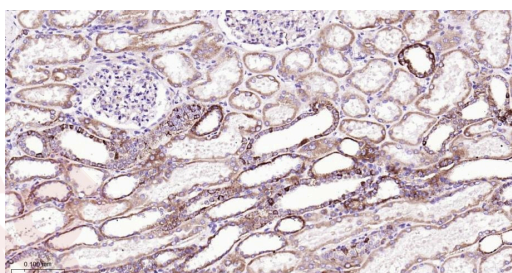
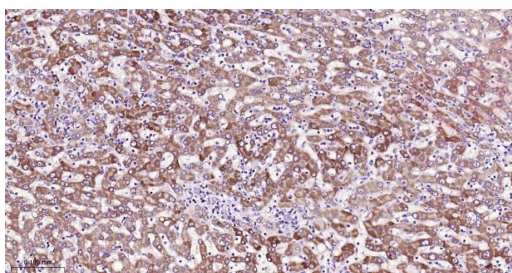
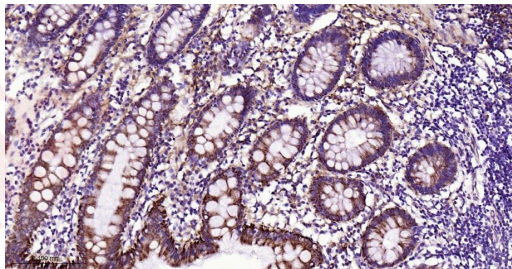
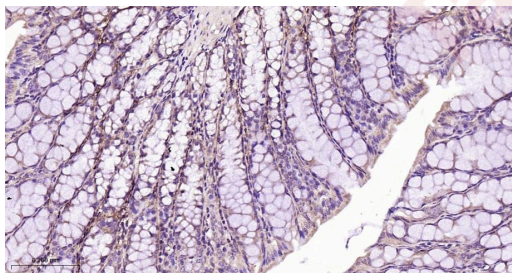
Ig Type:	IgG
Reactivity:	Human,Mouse,Rat
Molecular Weight:	Theoretical: 86 kDa.
Purification:	Protein A purified

### Applications

#### Verified Activity:

1. Paraformaldehyde-fixed, paraffin embedded Rat Colon; Antigen retrieval by boiling in sodium citrate buffer (pH6.0) for 15 min; Antibody incubation with CPT1A Polyclonal Antibody, Unconjugated (TMAB-00474) at 1:200 overnight at 4°C, followed by conjugation to the secondary antibody and DAB staining.
2. Paraformaldehyde-fixed, paraffin embedded Mouse Colon; Antigen retrieval by boiling in sodium citrate buffer (pH6.0) for 15 min; Antibody incubation with CPT1A Polyclonal Antibody, Unconjugated (TMAB-00474) at 1:200 overnight at 4°C, followed by conjugation to the secondary antibody and DAB staining.
3. Paraformaldehyde-fixed, paraffin embedded Human Colon; Antigen retrieval by boiling in sodium citrate buffer (pH6.0) for 15 min; Antibody incubation with CPT1A Polyclonal Antibody, Unconjugated (TMAB-00474) at 1:200 overnight at 4°C, followed by conjugation to the secondary antibody and DAB staining.
4. Paraformaldehyde-fixed, paraffin embedded Human Liver; Antigen retrieval by boiling in sodium citrate buffer (pH6.0) for 15 min; Antibody incubation with CPT1A Polyclonal Antibody, Unconjugated (TMAB-00474) at 1:200 overnight at 4°C, followed by conjugation to the secondary antibody and DAB staining.
5. Paraformaldehyde-fixed, paraffin embedded Human Kidney; Antigen retrieval by boiling in sodium citrate buffer (pH6.0) for 15 min; Antibody incubation with CPT1A Polyclonal Antibody, Unconjugated (TMAB-00474) at 1:200 overnight at 4°C, followed by conjugation to the secondary antibody and DAB staining.
6. Paraformaldehyde-fixed, paraffin embedded Human Ovarian Cancer; Antigen retrieval by boiling in sodium citrate buffer (pH6.0) for 15 min; Antibody incubation with CPT1A Polyclonal Antibody, Unconjugated (TMAB-00474) at 1:200 overnight at 4°C, followed by conjugation to the secondary antibody and DAB staining.
7. Paraformaldehyde-fixed, paraffin embedded Human Breast Cancer; Antigen retrieval by boiling in sodium citrate buffer (pH6.0) for 15 min; Antibody incubation with CPT1A Polyclonal Antibody, Unconjugated (TMAB-00474) at 1:200 overnight at 4°C, followed by conjugation to the secondary antibody and DAB staining.





Application: IHC-P,IHC-F,ICC/IF,IF,FCM

Recommended IHC-P=1:100-500,IHC-F=1:100-500,ICC/IF=1:50-200,IF=1:100-500,FCM=1:100-200

### Properties

Stability & Storage: Store at -20°C or -80°C for 12 months. Avoid repeated freeze-thaw cycles.

Shipping: Shipping with blue ice.

---

### Antigen Details

Immunogen: KLH conjugated synthetic peptide: human CPT1A

Antigen Species: Human

Gene ID: 1374

Uniprot ID: P50416

Synonyms: CPTI-L; Carnitine palmitoyltransferase 1A; CPT1-L; CPT I; CPT 1; CPT1A; Carnitine O-palmitoyltransferase 1, liver isoform; carnitine palmitoyl transferase 1

Biology Area: Metabolism of lipids and lipoproteins, Metabolism, Fatty acids, Lipid metabolism, Mitochondrial markers, Fatty acid oxidation, Obesity, Lipid metabolism, Mitochondrial, Mitochondria

---

### Research Background

The mitochondrial oxidation of long-chain fatty acids is initiated by the sequential action of carnitine palmitoyltransferase I (which is located in the outer membrane and is detergent-labile) and carnitine palmitoyltransferase II (which is located in the inner membrane and is detergent-stable), together with a carnitine-acylcarnitine translocase. CPT I is the key enzyme in the carnitine-dependent transport across the mitochondrial inner membrane and its deficiency results in a decreased rate of fatty acid beta-oxidation. Alternatively spliced transcript variants encoding different isoforms have been found for this gene. [provided by RefSeq, Jul 2008].

**Inhibitor · Natural Compounds · Compound Libraries · Recombinant Proteins**

This product is for Research Use Only · Not for Human or Veterinary or Therapeutic Use

Tel: 781-999-4286 E\_mail: info@targetmol.com Address: 34 Washington Street, Wellesley Hills, MA 02481