

Anti-COX1/MTCO1 Polyclonal Antibody

Product Details

Ig Type:	IgG
Reactivity:	Mouse,Rat (predicted:Human,Chicken,Dog,Pig,Cow,Horse,Rabbit,Sheep,Goat)
Molecular Weight:	Theoretical: 57 kDa. Actual: 45 kDa.
Purification:	Protein A purified

Applications

1. Paraformaldehyde-fixed, paraffin embedded (Rat kidney); Antigen retrieval by boiling in sodium citrate buffer (pH6.0) for 15 min; Block endogenous peroxidase by 3% hydrogen peroxide for 20 min; Blocking buffer (normal goat serum) at 37°C for 30 min; Antibody incubation with (COX1) Polyclonal Antibody, Unconjugated (TMAB-00468) at 1:500 overnight at 4°C, followed by a conjugated secondary for 20 min and DAB staining.

2. Sample:

Verified Activity:

Lane 1: Mouse Heart Lysates

Lane 2: Mouse Skeletal muscle Lysates

Lane 3: Rat Heart Lysates

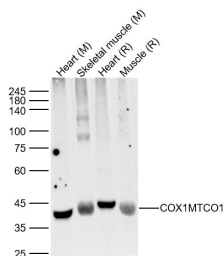
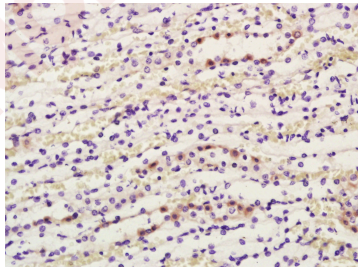
Lane 4: Rat Muscle Lysates

Primary: Anti-COX1MTCO1 (TMAB-00468) at 1/1000 dilution

Secondary: IRDye800CW Goat Anti-Rabbit IgG at 1/20000 dilution

Predicted band size: 57 kDa

Observed band size: 45 kDa



Application: IF,IHC-Fr,IHC-P,WB

Recommended WB: 1:500-2000; IHC-P: 1:100-500; IHC-Fr: 1:100-500; IF: 1:100-500

Properties

Stability & Storage: Store at -20°C or -80°C for 12 months. Avoid repeated freeze-thaw cycles.

Shipping: Shipping with blue ice.

Antigen Details

Immunogen: KLH conjugated synthetic peptide: human COX1

Antigen Species: Human

Gene ID: 4512

Uniprot ID: P00395

Synonyms: MTCO1;COI;Cytochrome c oxidase polypeptide I;EC:7.1.1.9;MT-CO1;Cytochrome c oxidase subunit 1;COXI;COX1;COX I

Biology Area: Integration of energy metabolism,Integration of energy,Mitochondrial markers,Complex IV, Cancer,Mitochondrial,Mitochondria

Research Background

Contributes to cytochrome-c oxidase activity. Predicted to be involved in electron transport coupled proton transport and mitochondrial electron transport, cytochrome c to oxygen. Part of mitochondrial respiratory chain complex III and mitochondrial respiratory chain complex IV. [provided by Alliance of Genome Resources, Apr 2022]

Inhibitor · Natural Compounds · Compound Libraries · Recombinant Proteins

This product is for Research Use Only · Not for Human or Veterinary or Therapeutic Use

Tel:781-999-4286 E_mail:info@targetmol.com Address:34 Washington Street,Wellesley Hills,MA 02481