

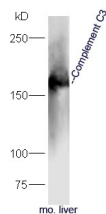
## Anti-Complement C3 Polyclonal Antibody

## Product Details

Ig Type:	IgG
Reactivity:	Human
Molecular Weight:	Theoretical: 181 kDa.
Purification:	Protein A purified

## Applications

Verified Activity:	Protein: mouse liver lysate at 40 µg; Primary: rabbit Anti-Complement C3 (TMAB-00466) at 1:300; Secondary: HRP conjugated Goat-Anti-rabbit IgG (secondary antibody) at 1: 5000; Predicted band size: 181 kDa Observed band size: 181 kDa
--------------------	--



Application:	WB
Recommended	WB: 1:500-2000

## Properties

Stability & Storage:	Store at -20°C or -80°C for 12 months. Avoid repeated freeze-thaw cycles.
Shipping:	Shipping with blue ice.

## Antigen Details

Immunogen:	KLH conjugated synthetic peptide: human Complement C3 alpha chain
Antigen Species:	Human
Gene ID:	718
Uniprot ID:	P01024
Synonyms:	Anaphylatoxin;C3a;Complement Component C3a
Biology Area:	Classical Pathway,Synapse marker,c3

## Research Background

The complement factor C3 consists of an alpha and a beta chain. C3 is a central factor in the complement cascade. It is central to the alternative pathway that leads to the C3 convertase C3bBb. The classical mannose binding lectin activation pathway leads to the C3 convertase C4b2a. These convertases cleave C3 resulting in C3a and C3b. Further degradation leads to the formation of the alpha chain products C3d, C3g and C3c. C3 is an acute phase protein that

## A DRUG SCREENING EXPERT

---

is produced by a wide range of tissues, including renal epithelial cells and hepatocytes.

**Inhibitor · Natural Compounds · Compound Libraries · Recombinant Proteins**

This product is for Research Use Only · Not for Human or Veterinary or Therapeutic Use

Tel:781-999-4286 E\_mail:info@targetmol.com Address:34 Washington Street,Wellesley Hills,MA 02481