

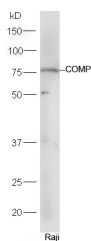
Anti-COMP Polyclonal Antibody

Product Details

Ig Type:	IgG
Reactivity:	Human (predicted:Mouse,Rat,Dog,Pig,Cow,Horse,Sheep)
Molecular Weight:	Theoretical: 83 kDa. Actual: 77 kDa.
Purification:	Protein A purified

Applications

Verified Activity:	Protein: Raji lysate;
	Primary: rabbit Anti-COMP (TMAB-00465) at 1:300;
	Secondary: HRP conjugated Goat-Anti-rabbit Igg (secondary antibody) at 1: 5000;
	Predicted band size: 83 kDa Observed band size: 77 kDa



Application:	WB
Recommended	WB: 1:500-2000

Properties

Stability & Storage:	Store at -20°C or -80°C for 12 months. Avoid repeated freeze-thaw cycles.
Shipping:	Shipping with blue ice.

Antigen Details

Immunogen:	KLH conjugated synthetic peptide: human COMP
Antigen Species:	Human
Gene ID:	1311
Uniprot ID:	P49747
Synonyms:	PSACH;THBS5;cartilage oligomeric matrix protein;EDM1;MED;EPD1

Research Background

The protein encoded by this gene is a noncollagenous extracellular matrix (ECM) protein. It consists of five identical glycoprotein subunits, each with EGF-like and calcium-binding (thrombospondin-like) domains. Oligomerization results from formation of a five-stranded coiled coil and disulfides. Binding to other ECM proteins such as collagen appears to depend on divalent cations. Mutations can cause the osteochondrodysplasias pseudoachondroplasia (PSACH) and multiple epiphyseal dysplasia (MED). [provided by RefSeq, Jul 2008].

Inhibitor · Natural Compounds · Compound Libraries · Recombinant Proteins

This product is for Research Use Only · Not for Human or Veterinary or Therapeutic Use

Tel:781-999-4286 E_mail:info@targetmol.com Address:34 Washington Street,Wellesley Hills,MA 02481