

Anti-Collagen III/COL3A1 Polyclonal Antibody 2

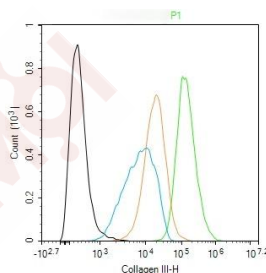
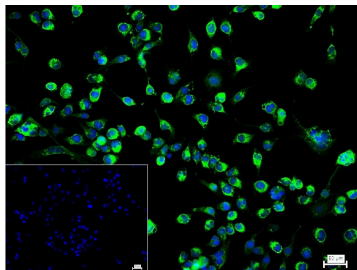
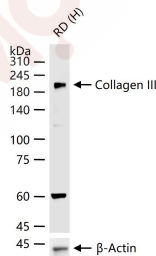
Product Details

Ig Type: IgG
Reactivity: Human (predicted:Chicken,Dog,Cow)
Molecular Weight: Theoretical: 117 kDa. Actual: 150-200 kDa.
Purification: Protein A purified

Applications

Verified Activity:

- 25 µg total protein per Lane of various lysates probed with Collagen III polyclonal antibody, unconjugated (TMAB-00460) at 1:1000 dilution and 4°C overnight incubation. Followed by conjugated secondary antibody incubation at RT for 60 min.
- 4% Paraformaldehyde-fixed RD (H) cell; Triton X-100 at RT for 20 min; Antibody incubation with (Collagen III) polyclonal Antibody, unconjugated (TMAB-00460) 1:100, 90 min at 37°C; followed by conjugated Goat Anti-Rabbit IgG antibody (green) at 37°C for 90 min, DAPI (blue) was used to stain the cell nucleus. PBS instead of the primary antibody was used as the blank control.
- The RD (H) cells were fixed with 4% PFA (10 min at room temperature) and then permeabilized with 90% ice-cold methanol for 20 min at -20°C, the cells then were incubated in 5% BSA to block non-specific protein-protein interactions (30 min at room temperature). Primary Antibody (green): Rabbit Anti-Collagen III antibody (TMAB-00460): 1 µg/10⁶ cells; Secondary Antibody (white blue): Goat anti-Rabbit IgG-BF488: 1 µg/test. Isotype Control (orange): Rabbit IgG. Blank control (black): PBS.



A DRUG SCREENING EXPERT

Application: FCM,ICC/IF,WB

Recommended WB: 1:500-2000; FCM: 1ug/Test; ICC/IF: 1:50-200

Properties

Stability & Storage: Store at -20°C or -80°C for 12 months. Avoid repeated freeze-thaw cycles.

Shipping: Shipping with blue ice.

Antigen Details

Immunogen: KLH conjugated synthetic peptide: human Collagen alpha 1(III) chain

Antigen Species: Human

Gene ID: 1281

Uniprot ID: P02461

Synonyms: Collagen alpha 1(III) chain;Collagen type III alpha;type III procollagen alpha 1 chain;Fetal collagen;Collagen type III alpha 1;Collagen III alpha 1 chain precursor;Collagen type III alpha 1 (Ehlers Danlos syndrome type IV autosomal dominant);Collagen III alpha 1 polypeptide;Ehlers Danlos syndrome type IV, autosomal dominant;Type III collagen;EDS4A;COL3A1;CO3A1;COL3A1

Biology Area: Collagen,Chondrogenesis,Osteogenesis

Research Background

The extensive family of COL gene products (collagens) is composed of several chain types, including fibril-forming interstitial collagens (types I, II, III and V) and basement membrane collagens (type IV), each type containing multiple isoforms. Collagens are fibrous, extracellular matrix proteins with high tensile strength and are the major components of connective tissue, such as tendons and cartilage. All collagens contain a triple helix domain and frequently show lateral self-association in order to form complex connective tissues. Several collagens also play a role in cell adhesion, important for maintaining normal tissue architecture and function.

This gene encodes the pro-alpha1 chains of type III collagen, a fibrillar collagen that is found in extensible connective tissues such as skin, lung, uterus, intestine and the vascular system, frequently in association with type I collagen. Mutations in this gene are associated with Ehlers-Danlos syndrome types IV, and with aortic and arterial aneurysms. Two transcripts, resulting from the use of alternate polyadenylation signals, have been identified for this gene.

Inhibitor · Natural Compounds · Compound Libraries · Recombinant Proteins

This product is for Research Use Only · Not for Human or Veterinary or Therapeutic Use

Tel:781-999-4286 E_mail:info@targetmol.com Address:34 Washington Street,Wellesley Hills,MA 02481