

Anti-Collagen II/COL2A1 Polyclonal Antibody

Product Details

Ig Type: IgG
Reactivity: Human
Molecular Weight: Theoretical: 117 kDa. Actual: 210 kDa.
Purification: Protein A purified

Applications

1. Sample:

293T (human) cell Lysate at 40 µg
A549 (human) cell Lysate at 40 µg
MCF-7 (human) cell Lysate at 40 µg
HepG2 (human) cell Lysate at 40 µg
Placenta (mouse) Lysate at 40 µg
MG63 (human) cell Lysate at 40 µg

Primary: Anti-Collagen II (TMAB-00456) at 1/300 dilution

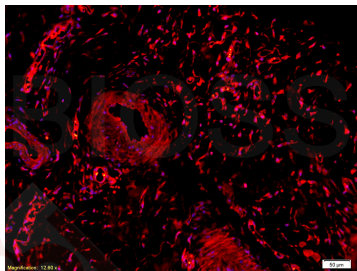
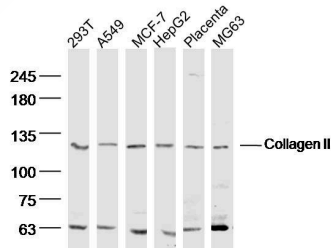
Verified Activity: Secondary: IRDye800CW Goat Anti-Rabbit IgG at 1/20000 dilution

Predicted band size: 117 kDa

Observed band size: 120 kDa

2. Tissue/cell: rabbit meniscus tissue; 4% Paraformaldehyde-fixed and paraffin-embedded;
Antigen retrieval: citrate buffer (0.01M, pH6.0), Boiling bathing for 15 min; Blocking buffer
(normal goat serum) at 37°C for 20 min;

Incubation: Anti-Collagen II Polyclonal Antibody, Unconjugated (TMAB-00456) 1:200, overnight
at 4°C; The secondary antibody was Goat Anti-Rabbit IgG, Cy3 conjugated used at 1:200
dilution for 40 minutes at 37°C. DAPI (5 µg/ml, blue) was used to stain the cell nucleus.



Application: IF, IHC-Fr, WB

Recommended WB: 1:500-2000; IHC-Fr: 1:100-500; IF: 1:100-500

Properties

Stability & Storage: Store at -20°C or -80°C for 12 months. Avoid repeated freeze-thaw cycles.

Shipping: Shipping with blue ice.

Antigen Details

Immunogen: KLH conjugated synthetic peptide: human Collagen II

Antigen Species: Human

Gene ID: 1280

Uniprot ID: P02458

Synonyms: STL1;collagen, type II, α 1;collagen, type II, alpha 1;SEDC;ANFH;COL11A3;AOM

Research Background

This gene encodes the alpha-1 chain of type II collagen, a fibrillar collagen found in cartilage and the vitreous humor of the eye. Mutations in this gene are associated with achondrogenesis, chondrodysplasia, early onset familial osteoarthritis, SED congenita, Langer-Saldino achondrogenesis, Kniest dysplasia, Stickler syndrome type I, and spondyloepimetaphyseal dysplasia Strudwick type. In addition, defects in processing chondrocalcin, a calcium binding protein that is the C-propeptide of this collagen molecule, are also associated with chondrodysplasia. There are two transcripts identified for this gene. [provided by RefSeq, Jul 2008]

Inhibitor · Natural Compounds · Compound Libraries · Recombinant Proteins

This product is for Research Use Only · Not for Human or Veterinary or Therapeutic Use

Tel:781-999-4286 E_mail:info@targetmol.com Address:34 Washington Street,Wellesley Hills,MA 02481