

Anti-Collagen I/COL1A1 Polyclonal Antibody 2

Product Details

Ig Type:	IgG
Reactivity:	Human,Mouse,Rat
Molecular Weight:	Theoretical: 130 kDa. Actual: 130-200 kDa.
Purification:	Protein A purified

Applications

Verified Activity:

1. 25 µg total protein per Lane of various lysates probed with Collagen I polyclonal antibody, unconjugated (TMAB-00455) at 1:1000 dilution and 4°C overnight incubation. Followed by conjugated secondary antibody incubation at RT for 60 min.
2. U-118 MG (H) cells were treated with or without BFA, 25 µg total protein per Lane of cell lysates probed with Collagen I polyclonal antibody, unconjugated (TMAB-00455) at 1:1000 dilution and 4°C overnight incubation. Followed by conjugated secondary antibody incubation at RT for 60 min.
3. Paraformaldehyde-fixed, paraffin embedded Mouse Lung; Antigen retrieval by boiling in sodium citrate buffer (pH6.0) for 15 min; The section was incubated with Collagen I Polyclonal Antibody, Unconjugated (TMAB-00455) at 1:800 overnight at 4°C, followed by conjugation to the secondary antibody and DAB staining.
4. Paraformaldehyde-fixed, paraffin embedded Rat Lung; Antigen retrieval by boiling in sodium citrate buffer (pH6.0) for 15 min; The section was incubated with Collagen I Polyclonal Antibody, Unconjugated (TMAB-00455) at 1:800 overnight at 4°C, followed by conjugation to the secondary antibody and DAB staining.
5. Paraformaldehyde-fixed, paraffin embedded Human Lung; Antigen retrieval by boiling in sodium citrate buffer (pH6.0) for 15 min; The section was incubated with Collagen I Polyclonal Antibody, Unconjugated (TMAB-00455) at 1:800 overnight at 4°C, followed by conjugation to the secondary antibody and DAB staining.
6. Paraformaldehyde-fixed, paraffin embedded Mouse Liver; Antigen retrieval by boiling in sodium citrate buffer (pH6.0) for 15 min; The section was incubated with Collagen I Polyclonal Antibody, Unconjugated (TMAB-00455) at 1:800 overnight at 4°C, followed by conjugation to the secondary antibody and DAB staining.
7. Paraformaldehyde-fixed, paraffin embedded Human Liver; Antigen retrieval by boiling in sodium citrate buffer (pH6.0) for 15 min; The section was incubated with Collagen I Polyclonal Antibody, Unconjugated (TMAB-00455) at 1:800 overnight at 4°C, followed by conjugation to the secondary antibody and DAB staining.
8. Paraformaldehyde-fixed, paraffin embedded Mouse Skin; Antigen retrieval by boiling in sodium citrate buffer (pH6.0) for 15 min; The section was incubated with Collagen I Polyclonal Antibody, Unconjugated (TMAB-00455) at 1:800 overnight at 4°C, followed by conjugation to the secondary antibody and DAB staining.
9. Paraformaldehyde-fixed, paraffin embedded Rat Skin; Antigen retrieval by boiling in sodium citrate buffer (pH6.0) for 15 min; The section was incubated with Collagen I Polyclonal Antibody, Unconjugated (TMAB-00455) at 1:800 overnight at 4°C, followed by conjugation to the secondary antibody and DAB staining.
10. Paraformaldehyde-fixed, paraffin embedded Rat Colon; Antigen retrieval by boiling in sodium citrate buffer (pH6.0) for 15 min; The section was incubated with Collagen I Polyclonal Antibody, Unconjugated (TMAB-00455) at 1:800 overnight at 4°C, followed by conjugation to

the secondary antibody and DAB staining.

11. Paraformaldehyde-fixed, paraffin embedded Human Colon Cancer; Antigen retrieval by boiling in sodium citrate buffer (pH6.0) for 15 min; The section was incubated with Collagen I Polyclonal Antibody, Unconjugated (TMAB-00455) at 1:800 overnight at 4°C, followed by conjugation to the secondary antibody and DAB staining.

12. Paraformaldehyde-fixed, paraffin embedded Human Prostate Cancer; Antigen retrieval by boiling in sodium citrate buffer (pH6.0) for 15 min; The section was incubated with Collagen I Polyclonal Antibody, Unconjugated (TMAB-00455) at 1:800 overnight at 4°C, followed by conjugation to the secondary antibody and DAB staining.

13. Paraformaldehyde-fixed, paraffin embedded Human Prostate; Antigen retrieval by boiling in sodium citrate buffer (pH6.0) for 15 min; The section was incubated with Collagen I Polyclonal Antibody, Unconjugated (TMAB-00455) at 1:800 overnight at 4°C, followed by conjugation to the secondary antibody and DAB staining.

14. Paraformaldehyde-fixed, paraffin embedded Human Breast Cancer; Antigen retrieval by boiling in sodium citrate buffer (pH6.0) for 15 min; The section was incubated with Collagen I Polyclonal Antibody, Unconjugated (TMAB-00455) at 1:800 overnight at 4°C, followed by conjugation to the secondary antibody and DAB staining.

15. Paraformaldehyde-fixed, paraffin embedded Human Esophagus Cancer; Antigen retrieval by boiling in sodium citrate buffer (pH6.0) for 15 min; The section was incubated with Collagen I Polyclonal Antibody, Unconjugated (TMAB-00455) at 1:800 overnight at 4°C, followed by conjugation to the secondary antibody and DAB staining.

16. Paraformaldehyde-fixed, paraffin embedded Human Endometrial Cancer; Antigen retrieval by boiling in sodium citrate buffer (pH6.0) for 15 min; The section was incubated with Collagen I Polyclonal Antibody, Unconjugated (TMAB-00455) at 1:800 overnight at 4°C, followed by conjugation to the secondary antibody and DAB staining.

17. Paraformaldehyde-fixed, paraffin embedded Human Kidney; Antigen retrieval by boiling in sodium citrate buffer (pH6.0) for 15 min; The section was incubated with Collagen I Polyclonal Antibody, Unconjugated (TMAB-00455) at 1:800 overnight at 4°C, followed by conjugation to the secondary antibody and DAB staining.

18. Paraformaldehyde-fixed, paraffin embedded Human Placenta; Antigen retrieval by boiling in sodium citrate buffer (pH6.0) for 15 min; The section was incubated with Collagen I Polyclonal Antibody, Unconjugated (TMAB-00455) at 1:800 overnight at 4°C, followed by conjugation to the secondary antibody and DAB staining.

19. Paraformaldehyde-fixed, paraffin embedded Human Uterus; Antigen retrieval by boiling in sodium citrate buffer (pH6.0) for 15 min; The section was incubated with Collagen I Polyclonal Antibody, Unconjugated (TMAB-00455) at 1:800 overnight at 4°C, followed by conjugation to the secondary antibody and DAB staining.

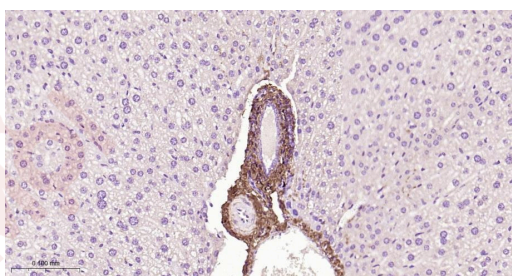
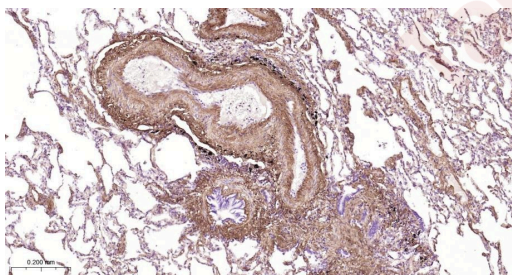
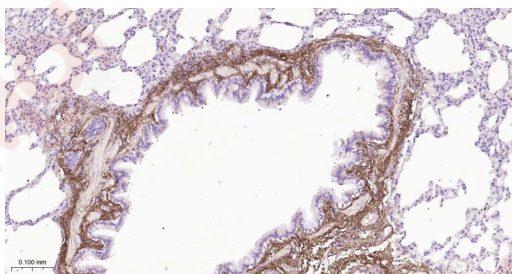
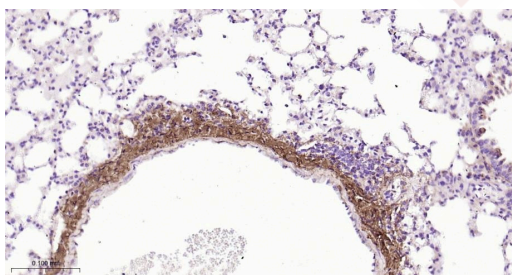
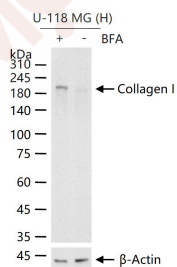
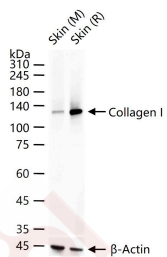
20. 4% Paraformaldehyde-fixed U-87MG (H) cell; Triton X-100 at RT for 20 min; Antibody incubation with (Collagen I) polyclonal Antibody, unconjugated (TMAB-00455) 1:100, 90 min at 37°C; followed by conjugated Goat Anti-Rabbit IgG antibody (green) at 37°C for 90 min, DAPI (blue) was used to stain the cell nucleus. PBS instead of the primary antibody was used as the blank control.

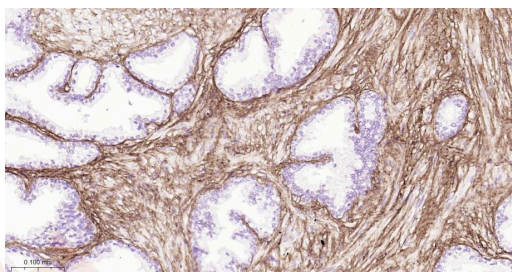
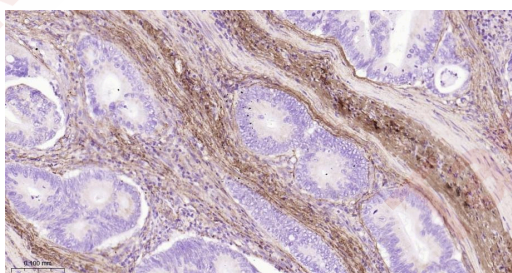
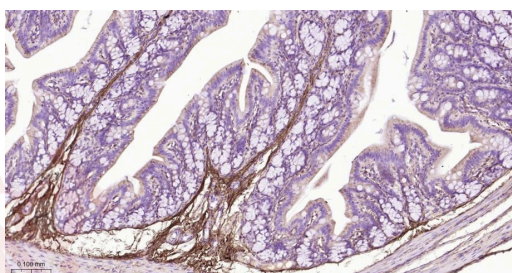
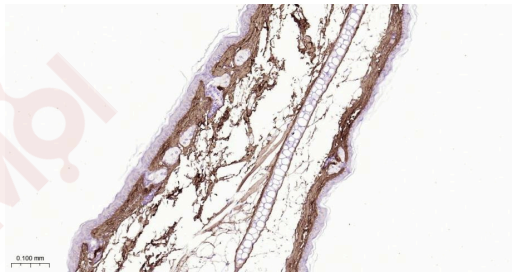
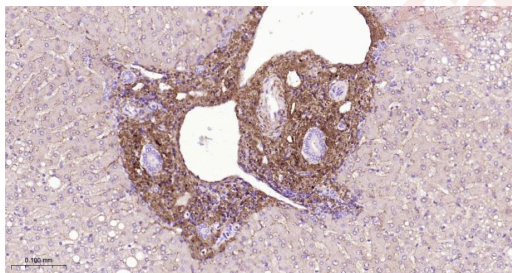
21. The U-87MG (H) cells were fixed with 4% PFA (10 min at room temperature) and then permeabilized with 90% ice-cold methanol for 20 min at -20°C, the cells then were incubated in 5% BSA to block non-specific protein-protein interactions (30 min at room temperature). Primary Antibody (green): Rabbit Anti-Collagen I antibody (TMAB-00455, 1:100); Secondary Antibody (white blue): Goat anti-Rabbit IgG-BF488: 1 µg/test. Blank control (black): PBS.

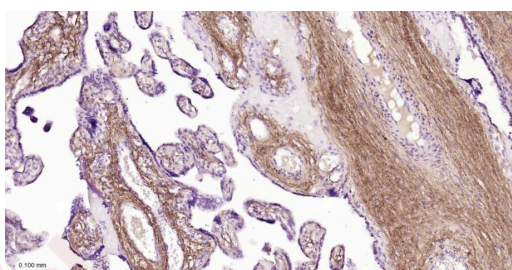
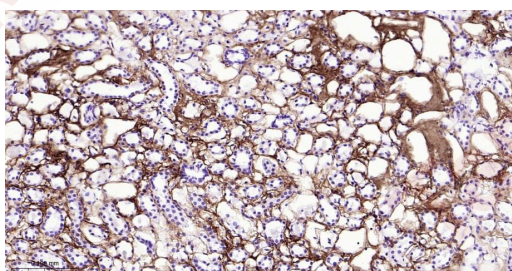
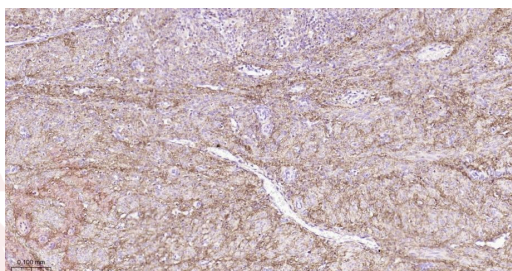
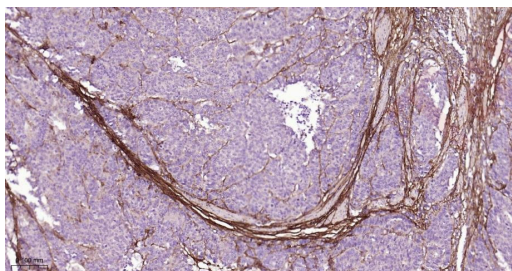
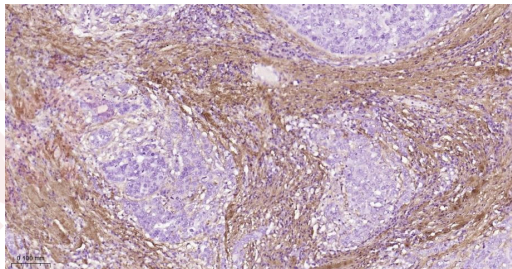
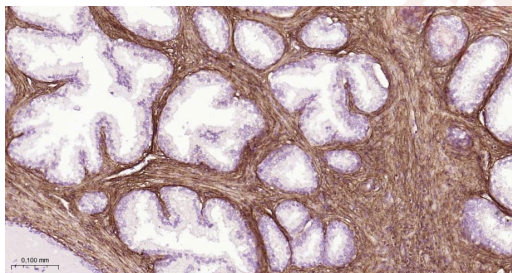
22. The U2-OS (H) cells were fixed with 4% PFA (10 min at room temperature) and then permeabilized with 90% ice-cold methanol for 20 min at -20°C, the cells then were incubated in 5% BSA to block non-specific protein-protein interactions (30 min at room temperature). Primary Antibody (green): Rabbit Anti-Collagen I antibody (TMAB-00455, 1:100); Secondary Antibody (white blue): Goat anti-Rabbit IgG-BF488: 1 µg/test. Blank control (black): PBS.

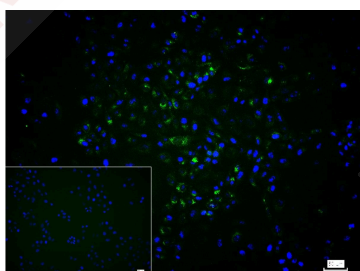
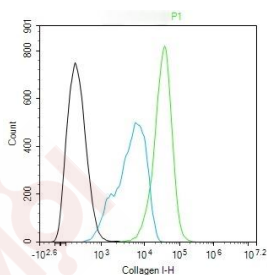
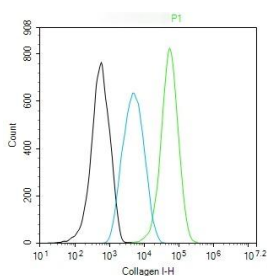
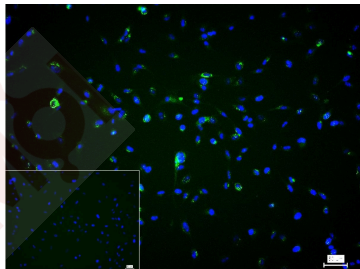
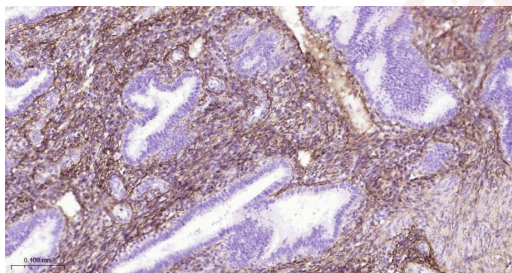
23. 4% Paraformaldehyde-fixed U2-OS (H) cell; Triton X-100 at RT for 20 min; Antibody

incubation with (Collagen I) polyclonal Antibody, unconjugated (TMAB-00455) 1:100, 90 min at 37°C; followed by conjugated Goat Anti-Rabbit IgG antibody (green) at 37°C for 90 min, DAPI (blue) was used to stain the cell nucleus. PBS instead of the primary antibody was used as the blank control.









Application: FCM, ICC/IF, IHC-Fr, IHC-P, WB

Recommended FCM=1:50-100; ICC/IF=1:100-500; IF=1:500-1000; IHC-Fr=1:500-1000; IHC-P=1:500-1000; WB=1:500-2000

Properties

Stability & Storage: Store at -20°C or -80°C for 12 months. Avoid repeated freeze-thaw cycles.

Shipping: Shipping with blue ice.

Antigen Details

Immunogen:	KLH conjugated synthetic peptide: human Collagen I
Antigen Species:	Human
Gene ID:	1277
Uniprot ID:	P02452
Synonyms:	Pro alpha 1(I) collagen;Collagen type I;Collagen Of Skin Tendon And Bone;Collagen type I alpha 2;alpha 1 type I collagen;COL1A1;COL1A2;Collagen I alpha 2 polypeptide;Osteogenesis Imperfecta Type IV;Type I procollagen;Collagen I alpha 1 polypeptide;alpha 2 type I collagen;Collagen Type 1;OI4;Collagen type I alpha 1;CO1A1
Biology Area:	Collagen,Osteogenesis

Research Background

Collagens are highly conserved throughout evolution and are characterised by an uninterrupted "Glycine X Y" triplet repeat that is a necessary part of the triple helical structure. Type I collagen (95 kDa) is found in bone, cornea, skin and tendon. Mutations in the encoding gene are associated with osteogenesis imperfecta, Ehlers Danlos syndrome, and idiopathic osteoporosis. Reciprocal translocations between chromosomes 17 and 22, where this gene and the gene for Platelet-derived growth factor beta are located, are associated with a particular type of skin tumor called dermatofibrosarcoma protuberans, resulting from unregulated expression of the growth factor.

Inhibitor · Natural Compounds · Compound Libraries · Recombinant Proteins

This product is for Research Use Only· Not for Human or Veterinary or Therapeutic Use

Tel:781-999-4286 E_mail:info@targetmol.com Address:34 Washington Street,Wellesley Hills,MA 02481