

## Anti-CLEC9A Polyclonal Antibody

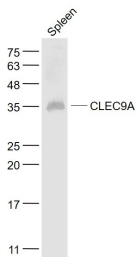
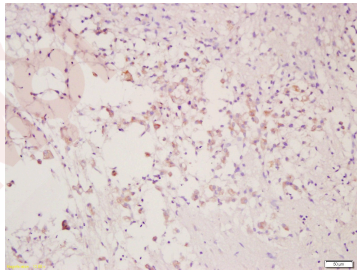
### Product Details

Ig Type:	IgG
Reactivity:	Mouse,Rat (predicted:Human)
Molecular Weight:	Theoretical: 27 kDa. Actual: 35 kDa.
Purification:	Protein A purified

### Applications

1. Tissue/cell: rat injured brain; 4% Paraformaldehyde-fixed and paraffin-embedded; Antigen retrieval: citrate buffer (0.01M, pH6.0), Boiling bathing for 15 min; Block endogenous peroxidase by 3% Hydrogen peroxide for 30 min; Blocking buffer (normal goat serum) at 37°C for 20 min; Incubation: Anti-CLEC9A Polyclonal Antibody, Unconjugated (TMAB-00450) 1:200, overnight at 4°C, followed by conjugation to the secondary antibody and DAb staining.
2. Sample:  
Spleen (Mouse) Lysate at 40 µg  
Primary: Anti-CLEC9A (TMAB-00450) at 1/1000 dilution  
Secondary: IRDye800CW Goat Anti-Rabbit IgG at 1/20000 dilution  
Predicted band size: 27 kDa  
Observed band size: 35 kDa

Verified Activity:



Application:	IF,IHC-Fr,IHC-P,WB
Recommended	WB: 1:500-2000; IHC-P: 1:100-500; IHC-Fr: 1:100-500; IF: 1:100-500

### Properties

Stability & Storage: Store at -20°C or -80°C for 12 months. Avoid repeated freeze-thaw cycles.

Shipping: Shipping with blue ice.

---

### Antigen Details

Immunogen: KLH conjugated synthetic peptide: human CLEC9A

Antigen Species: Human

Gene ID: 283420

Synonyms: 9830005G06Rik;DNDR-1;CLEC9A;CD370;UNQ9341;HEEE9341

Biology Area: Myeloid Cells, Surface Molecules

---

### Research Background

The C-type lectin/C-type lectin-like domain (CTL/CTLD) superfamily consists of a variety of proteins that share a common protein fold and have diverse functions, including cell-cell signaling, cell adhesion, glycoprotein turnover and immune responses. CLEC-9A (C-type lectin domain family 9 member A), also known as DNDR1 (dendritic cell natural killer lectin group receptor 1), is a 241 amino acid single-pass type II membrane protein that contains one C-type lectin domain and belongs to the CTL/CTLD superfamily. Expressed in myeloid lineage cells, brain, spleen and thymus, CLEC-9A is a group V C-type lectin-like receptor (CLR) that acts as an activation receptor. The gene encoding CLEC-9A maps to human chromosome 12p13.2 and mouse chromosome 6 F3.

**Inhibitor · Natural Compounds · Compound Libraries · Recombinant Proteins**

This product is for Research Use Only · Not for Human or Veterinary or Therapeutic Use

Tel: 781-999-4286 E\_mail: info@targetmol.com Address: 34 Washington Street, Wellesley Hills, MA 02481