

Anti-CLEC7A Polyclonal Antibody 2

Product Details

Ig Type:	IgG
Reactivity:	Human,Mouse (predicted:Rat)
Molecular Weight:	Theoretical: 28 kDa. Actual: 28 kDa.
Purification:	Protein A purified

Applications

1. Sample: Lung (Mouse) lysate at 30 µg;
Primary: Anti-beta Glucan Receptor (TMAB-00449) at 1:300 dilution;
Secondary: HRP conjugated Goat-Anti-rabbit Igg (secondary antibody) at 1:5000 dilution;
Predicted band size: 28 kDa
Observed band size: 28 kDa

2. Sample:

Spleen (Mouse) Lysate at 40 µg
Thymus (Mouse) Lysate at 40 µg
Primary: Anti-beta Glucan Receptor (TMAB-00449) at 1/1000 dilution
Secondary: IRDye800CW Goat Anti-Rabbit IgG at 1/20000 dilution
Predicted band size: 28 kDa
Observed band size: 28 kDa

3. Blank control: THP-1. Primary Antibody (green line): Rabbit Anti-beta Glucan Receptor antibody (TMAB-00449)

Dilution: 2 µg/10⁶ cells;
Isotype Control Antibody (orange line): Rabbit IgG.
Secondary Antibody: Goat anti-rabbit IgG-FITC
Dilution: 1 µg/test.

Protocol

The cells were incubated in 5% BSA to block non-specific protein-protein interactions for 30 min at room temperature. Cells stained with Primary Antibody for 30 min at room temperature. The secondary antibody used for 40 min at room temperature.

4. Blank control: RAW264.7. Primary Antibody (green line): Rabbit Anti-Iba1 antibody (TMAB-00449)

Dilution: 1 µg/Test;
Secondary Antibody (white blue line): Goat anti-Rabbit IgG-AF488
Dilution: 0.5 µg/Test.

Isotype control (orange line): Normal Rabbit IgG

Protocol

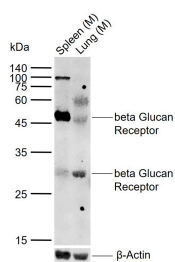
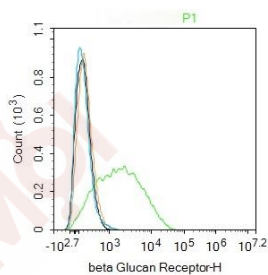
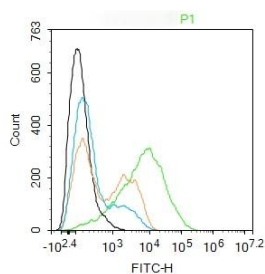
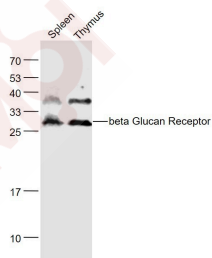
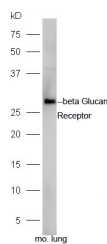
The cells were incubated in 5% BSA to block non-specific protein-protein interactions for 30 min at room temperature. Cells stained with Primary Antibody for 30 min at room temperature. The secondary antibody used for 40 min at room temperature.

5. Sample:

Lane 1: Mouse Spleen tissue lysates
Lane 2: Mouse Lung tissue lysates
Primary: Anti-beta Glucan Receptor (TMAB-00449) at 1/1000 dilution
Secondary: IRDye800CW Goat Anti-Rabbit IgG at 1/20000 dilution
Predicted band size: 28 kDa

Verified Activity:

Observed band size: 28,47 kDa



Application: FCM,WB

Recommended WB: 1:500-2000; FCM: 1ug/Test

Properties

Stability & Storage: Store at -20°C or -80°C for 12 months. Avoid repeated freeze-thaw cycles.

Shipping: Shipping with blue ice.

Antigen Details

Immunogen: KLH conjugated synthetic peptide: human CLEC7A
Antigen Species: Human
Gene ID: 64581
Uniprot ID: Q9BXN2
Synonyms: DECTIN1;BGR;CLECSF12;CANDF4;C-type lectin domain family 7, member A
Biology Area: Macrophage / Inflamm.

Research Background

This gene encodes a member of the C-type lectin/C-type lectin-like domain (CTL/CTLD) superfamily. The encoded glycoprotein is a small type II membrane receptor with an extracellular C-type lectin-like domain fold and a cytoplasmic domain with an immunoreceptor tyrosine-based activation motif. It functions as a pattern-recognition receptor that recognizes a variety of beta-1,3-linked and beta-1,6-linked glucans from fungi and plants, and in this way plays a role in innate immune response. Alternate transcriptional splice variants, encoding different isoforms, have been characterized. This gene is closely linked to other CTL/CTLD superfamily members on chromosome 12p13 in the natural killer gene complex region. [provided by RefSeq].

Inhibitor · Natural Compounds · Compound Libraries · Recombinant Proteins

This product is for Research Use Only · Not for Human or Veterinary or Therapeutic Use

Tel: 781-999-4286 E_mail: info@targetmol.com Address: 34 Washington Street, Wellesley Hills, MA 02481