

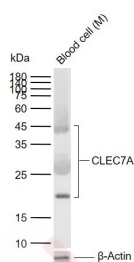
## Anti-CLEC7A Polyclonal Antibody

## Product Details

Ig Type:	IgG
Reactivity:	Mouse (predicted:Rat)
Molecular Weight:	Theoretical: 28 kDa. Actual: 42,27,21 kDa.
Purification:	Protein A purified

## Applications

Sample:	Lane 1: Mouse Blood cell lysates
Verified Activity:	Primary: Anti-CLEC7A (TMAB-00448) at 1/1000 dilution Secondary: IRDye800CW Goat Anti-Rabbit IgG at 1/20000 dilution Predicted band size: 28 kDa Observed band size: 42,27,21 kDa



Application:	WB
Recommended	WB: 1:500-2000

## Properties

Stability & Storage:	Store at -20°C or -80°C for 12 months. Avoid repeated freeze-thaw cycles.
Shipping:	Shipping with blue ice.

## Antigen Details

Immunogen:	KLH conjugated synthetic peptide: mouse CLEC7A
Antigen Species:	Mouse
Gene ID:	56644
Uniprot ID:	Q6QLQ4
Synonyms:	$\beta$ -glucan receptor; CANDF4; DECTIN1; CD369; DC-associated C-type lectin 1; Dectin-1; Beta-glucan receptor; BGR; CLECSF12
Biology Area:	Macrophage / Inflamm.

## Research Background

This gene encodes a member of the C-type lectin/C-type lectin-like domain (CTL/CTLD) superfamily. The encoded glycoprotein is a small type II membrane receptor with an extracellular C-type lectin-like domain fold and a cytoplasmic domain with an immunoreceptor tyrosine-based activation motif. It functions as a pattern-recognition

## A DRUG SCREENING EXPERT

---

receptor that recognizes a variety of beta-1,3-linked and beta-1,6-linked glucans from fungi and plants, and in this way plays a role in innate immune response. Alternate transcriptional splice variants, encoding different isoforms, have been characterized. This gene is closely linked to other CTL/CTLD superfamily members on chromosome 12p13 in the natural killer gene complex region. [provided by RefSeq].

**Inhibitor · Natural Compounds · Compound Libraries · Recombinant Proteins**

This product is for Research Use Only · Not for Human or Veterinary or Therapeutic Use

Tel:781-999-4286 E\_mail:info@targetmol.com Address:34 Washington Street,Wellesley Hills,MA 02481