

Anti-CLEC4E Polyclonal Antibody

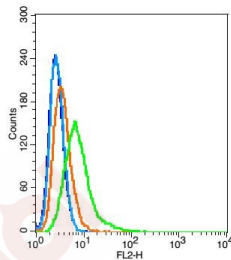
Product Details

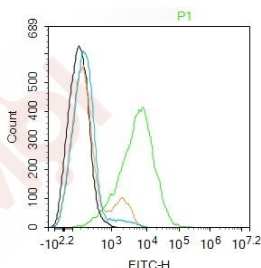
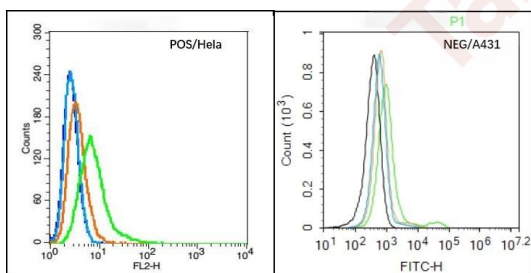
Ig Type:	IgG
Reactivity:	Human (predicted:Horse,Cow,Rat,Mouse)
Molecular Weight:	Theoretical: 25 kDa.
Purification:	Protein A purified

Applications

Verified Activity:

- Blank control: Hela (blue), the cells were fixed with 2% paraformaldehyde (10 min) and then permeabilized with ice-cold 90% methanol for 30 min on ice.
 Isotype Control Antibody: Rabbit IgG (orange);
 Secondary Antibody: Goat anti-rabbit IgG-Pe (white blue),
 Dilution: 1:200 in 1 X PBS containing 0.5% BSA;
 Primary Antibody Dilution: 5 µg in 100 µL 1X PBS containing 0.5% BSA (green).
- Black line: Positive blank control (Hela); Negative blank control (A431)
 Green line: Primary Antibody (Rabbit Anti-CLEC 4E antibody (TMAB-00446))
 Orange line: Isotype Control Antibody (Rabbit IgG).
 Blue line: Secondary Antibody (Goat anti-rabbit IgG-PE)/(Goat anti-rabbit IgG-AF488)
 Hela (Positive) and A431 (Negative control) cells (black) were incubated in 5% BSA blocking buffer for 30 min at room temperature. Cells were then stained with CLEC 4E Antibody (TMAB-00446) at 1:50 dilution in blocking buffer and incubated for 30 min at room temperature, washed twice with 2% BSA in PBS, followed by secondary antibody (blue) incubation for 40 min at room temperature. Acquisitions of 20,000 events were performed. Cells stained with primary antibody (green), and isotype control (orange).
- Blank control: THP-1. Primary Antibody (green line): Rabbit Anti-CLEC 4E antibody (TMAB-00446)
 Dilution: 2 µg/10⁶ cells;
 Isotype Control Antibody (orange line): Rabbit IgG.
 Secondary Antibody: Goat anti-rabbit IgG-FITC
 Dilution: 0.5 µg/test.
 Protocol
 The cells were incubated in 5% BSA to block non-specific protein-protein interactions for 30 min at room temperature. Cells stained with Primary Antibody for 30 min at room temperature. The secondary antibody used for 40 min at room temperature.





Application: FCM
 Recommended FCM: 2µg/Test

Properties

Stability & Storage: Store at -20°C or -80°C for 12 months. Avoid repeated freeze-thaw cycles.
 Shipping: Shipping with blue ice.

Antigen Details

Immunogen: KLH conjugated synthetic peptide: human CLECSF9
 Antigen Species: Human
 Gene ID: 26253
 Uniprot ID: Q9JULY5
 Synonyms: CLECSF9;C-Type Lectin Domain Family 4 Member E;MINCLE;C-Type Lectin Superfamily Member 9;CLEC4E;Macrophage-Inducible C-Type Lectin
 Biology Area: Macrophage / Inflamm.

Research Background

C-type lectin that functions as cell-surface receptor for a wide variety of ligands such as damaged cells, fungi and mycobacteria. Plays a role in the recognition of pathogenic fungi, such as *Candida albicans*. The detection of mycobacteria is via trehalose 6,6'-dimycolate (TDM), a cell wall glycolipid. Specifically recognizes alpha-mannose residues on pathogenic fungi of the genus *Malassezia*. Recognizes also SAP130, a nuclear protein, that is released by dead or dying cells. Transduces signals through an ITAM-containing adapter protein, Fc receptor gamma chain /FCER1G. Induces secretion of inflammatory cytokines through a pathway that depends on SYK, CARD9 and NF-kappa-B.

Inhibitor · Natural Compounds · Compound Libraries · Recombinant Proteins

This product is for Research Use Only · Not for Human or Veterinary or Therapeutic Use

Tel:781-999-4286 E_mail:info@targetmol.com Address:34 Washington Street,Wellesley Hills,MA 02481