

Anti-Claudin-5 Polyclonal Antibody

Product Details

Ig Type: IgG
Reactivity: Human, Mouse (predicted: Rat, Pig, Cow, Horse, Rabbit, Sheep)
Molecular Weight: Theoretical: 23 kDa. Actual: 23 kDa.
Purification: Protein A purified

Applications

1. Blank control: K562. Primary Antibody (green line): Rabbit Anti-Claudin 5 antibody (TMAB-00444)

Dilution: 2 $\mu\text{g}/10^6$ cells;

Isotype Control Antibody (orange line): Rabbit IgG.

Secondary Antibody: Goat anti-rabbit IgG-FITC

Dilution: 0.5 $\mu\text{g}/\text{test}$.

Protocol

The cells were incubated in 5% BSA to block non-specific protein-protein interactions for 30 min at room temperature. Cells stained with Primary Antibody for 30 min at room temperature. The secondary antibody used for 40 min at room temperature.

Verified Activity:

2. Protein: lung (mouse) lysates at 45 μg ;

Primary: Anti-Claudin 5 (TMAB-00444) at 1:300;

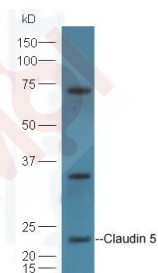
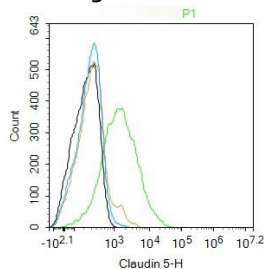
Secondary: HRP conjugated Goat-Anti-Rabbit IgG (bse-0295G-HRP) at 1: 5000;

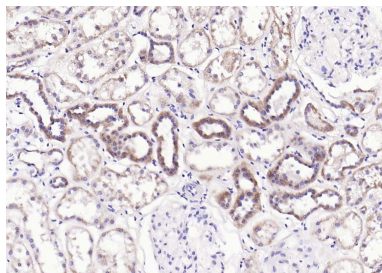
ECL excited the fluorescence;

Predicted band size: 23 kDa

Observed band size: 23 kDa

3. Paraformaldehyde-fixed, paraffin embedded (Human kidney); Antigen retrieval by boiling in sodium citrate buffer (pH6.0) for 15 min; Block endogenous peroxidase by 3% hydrogen peroxide for 20 min; Blocking buffer (normal goat serum) at 37°C for 30 min; Antibody incubation with (Claudin 5) Polyclonal Antibody, Unconjugated (TMAB-00444) at 1:200 overnight at 4°C, followed by operating according to SP Kit (Rabbit) instructions and DAB staining.





Application: FCM,IF,IHC-Fr,IHC-P,WB

Recommended WB: 1:500-2000; IHC-P: 1:100-500; IHC-Fr: 1:100-500; IF: 1:100-500; FCM: 2ug/Test

Properties

Stability & Storage: Store at -20°C or -80°C for 12 months. Avoid repeated freeze-thaw cycles.

Shipping: Shipping with blue ice.

Antigen Details

Immunogen: KLH conjugated synthetic peptide: human Claudin 5

Antigen Species: Human

Gene ID: 7122

Uniprot ID: O00501

Synonyms: Transmembrane protein deleted in VCFS;CLDN5;AWAL TMVCF;TMDVCF;Claudin5

Biology Area: Tight Junctions

Research Background

This gene encodes a member of the claudin family. Claudins are integral membrane proteins and components of tight junction strands. Tight junction strands serve as a physical barrier to prevent solutes and water from passing freely through the paracellular space between epithelial or endothelial cell sheets. Mutations in this gene have been found in patients with velocardiofacial syndrome. Alternatively spliced transcript variants encoding the same protein have been found for this gene. [provided by RefSeq, Aug 2008]

Inhibitor · Natural Compounds · Compound Libraries · Recombinant Proteins

This product is for Research Use Only · Not for Human or Veterinary or Therapeutic Use

Tel:781-999-4286 E_mail:info@targetmol.com Address:34 Washington Street,Wellesley Hills,MA 02481