

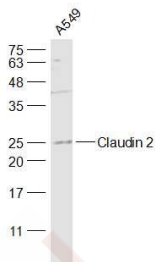
Anti-Claudin-2 Polyclonal Antibody

Product Details

Ig Type:	IgG
Reactivity:	Human (predicted:Mouse,Rat,Dog,Pig,Cow,Horse,Rabbit,Sheep)
Molecular Weight:	Theoretical: 25 kDa. Actual: 25 kDa.
Purification:	Protein A purified

Applications

Sample:	A549 (Human) Cell Lysate at 30 µg
Verified Activity:	Primary: Anti-Claudin 2 (TMAB-00441) at 1/1000 dilution Secondary: IRDye800CW Goat Anti-Rabbit IgG at 1/20000 dilution Predicted band size: 25 kDa Observed band size: 25 kDa



Application:	WB
Recommended	WB: 1:500-2000

Properties

Stability & Storage:	Store at -20°C or -80°C for 12 months. Avoid repeated freeze-thaw cycles.
Shipping:	Shipping with blue ice.

Antigen Details

Immunogen:	KLH conjugated synthetic peptide: human Claudin 2
Antigen Species:	Human
Gene ID:	9075
Uniprot ID:	P57739
Synonyms:	CLDN2;Claudin2;SP82;SP 82;CLDN 2;OTTHUMP00000023793;CLD2
Biology Area:	Tight Junctions

Research Background

The claudin superfamily consists of structurally related proteins that are important structural and functional components of tight junctions. Claudin-2, also known as CLDN2 or SP82, is a 230 amino acid multi-pass membrane protein that localizes to the cell junctions and belongs to the claudin superfamily. Able to form homopolymers of

heteropolymers with other claudin family members, claudin-2 plays an essential role in mediating calcium-independent cell-adhesion activity that is necessary for tight junction-specific obliteration of the intercellular space. Overexpression of claudin-2 is associated with a variety of diseases, including lung cancer, colorectal cancer, gastrointestinal carcinomas and inflammatory bowel disease, further affirming the importance of claudin-2 in cell adhesion. The gene encoding claudin-2 maps to human chromosome X, which contains nearly 153 million base pairs and houses over 1,000 genes.

Inhibitor · Natural Compounds · Compound Libraries · Recombinant Proteins

This product is for Research Use Only · Not for Human or Veterinary or Therapeutic Use

Tel:781-999-4286 E_mail:info@targetmol.com Address:34 Washington Street,Wellesley Hills,MA 02481