

Anti-Claudin-1 Polyclonal Antibody 2

Product Details

| | |
|-------------------|--------------------------------------|
| Ig Type: | IgG |
| Reactivity: | Human,Mouse (predicted:Rat) |
| Molecular Weight: | Theoretical: 23 kDa. Actual: 17 kDa. |
| Purification: | Protein A purified |

Applications

Sample:

Lane 1: Mouse Skin tissue lysates

Lane 2: Human A549 cell lysates

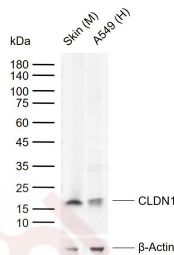
Verified Activity:

Primary: Anti-CLDN1 (TMAB-00439) at 1/1000 dilution

Secondary: IRDye800CW Goat Anti-Rabbit IgG at 1/20000 dilution

Predicted band size: 23 kDa

Observed band size: 17 kDa



Application: WB

Recommended WB: 1:500-2000

Properties

Stability & Storage: Store at -20°C or -80°C for 12 months. Avoid repeated freeze-thaw cycles.

Shipping: Shipping with blue ice.

Antigen Details

Immunogen: KLH conjugated synthetic peptide: mouse Claudin 1

Antigen Species: Mouse

Synonyms: Claudin-1;CLDN1;CLD1;Senescence-associated epithelial membrane protein;SEMP1

Biology Area: Tight Junctions

Research Background

Tight junctions represent one mode of cell-to-cell adhesion in epithelial or endothelial cell sheets, forming continuous seals around cells and serving as a physical barrier to prevent solutes and water from passing freely through the paracellular space. These junctions are comprised of sets of continuous networking strands in the outwardly facing cytoplasmic leaflet, with complementary grooves in the inwardly facing extracytoplasmic leaflet. The protein encoded by this gene, a member of the claudin family, is an integral membrane protein and a

A DRUG SCREENING EXPERT

component of tight junction strands. Loss of function mutations result in neonatal ichthyosis-sclerosing cholangitis syndrome. [provided by RefSeq, Jul 2008]

Inhibitor · Natural Compounds · Compound Libraries · Recombinant Proteins

This product is for Research Use Only · Not for Human or Veterinary or Therapeutic Use

Tel:781-999-4286 E_mail:info@targetmol.com Address:34 Washington Street,Wellesley Hills,MA 02481