

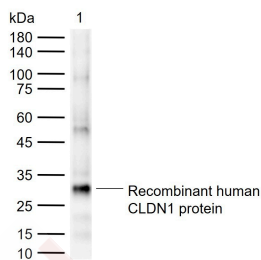
Anti-Claudin-1 Polyclonal Antibody

Product Details

Ig Type:	IgG
Reactivity:	Human (predicted:Mouse,Rat)
Molecular Weight:	Theoretical: 23 kDa. Actual: 30 kDa.
Purification:	Protein A purified

Applications

Verified Activity:	Sample: Lane 1: Recombinant human CLDN1 protein, N-Trx-His Primary: Anti-CLDN1 (TMAB-00438) at 1/1000 dilution Secondary: IRDye800CW Goat Anti-Rabbit IgG at 1/20000 dilution Predicted band size: 23 kDa Observed band size: 30 kDa
--------------------	---



Application:	WB
Recommended	WB: 1:500-2000

Properties

Stability & Storage:	Store at -20°C or -80°C for 12 months. Avoid repeated freeze-thaw cycles.
Shipping:	Shipping with blue ice.

Antigen Details

Immunogen:	KLH conjugated synthetic peptide: human CLDN1
Antigen Species:	Human
Gene ID:	9076
Uniprot ID:	O95832
Synonyms:	SEMP1;CLD1;Claudin-1;Senescence-associated epithelial membrane protein;CLDN1
Biology Area:	Tight Junctions

Research Background

Tight junctions represent one mode of cell-to-cell adhesion in epithelial or endothelial cell sheets, forming continuous seals around cells and serving as a physical barrier to prevent solutes and water from passing freely through the paracellular space. These junctions are comprised of sets of continuous networking strands in the

A DRUG SCREENING EXPERT

outwardly facing cytoplasmic leaflet, with complementary grooves in the inwardly facing extracytoplasmic leaflet. The protein encoded by this gene, a member of the claudin family, is an integral membrane protein and a component of tight junction strands. Loss of function mutations result in neonatal ichthyosis-sclerosing cholangitis syndrome. [provided by RefSeq, Jul 2008]

Inhibitor · Natural Compounds · Compound Libraries · Recombinant Proteins

This product is for Research Use Only · Not for Human or Veterinary or Therapeutic Use

Tel:781-999-4286 E_mail:info@targetmol.com Address:34 Washington Street,Wellesley Hills,MA 02481