

Anti-Claudin-1 Antibody (2P425)

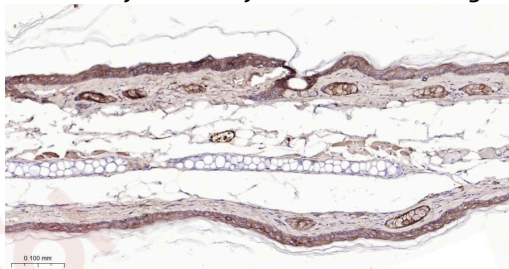
Product Details

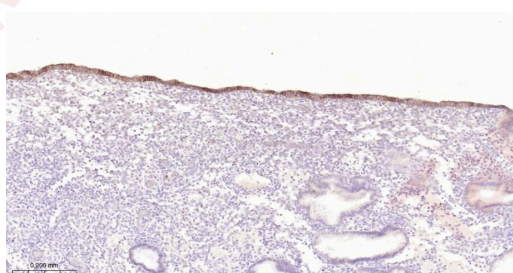
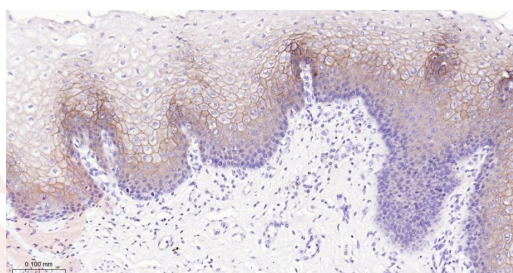
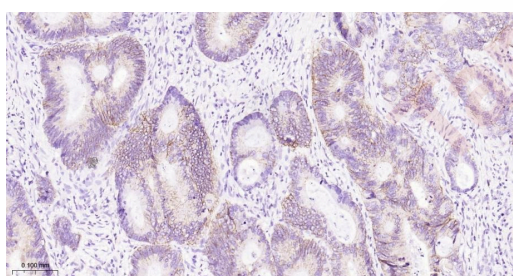
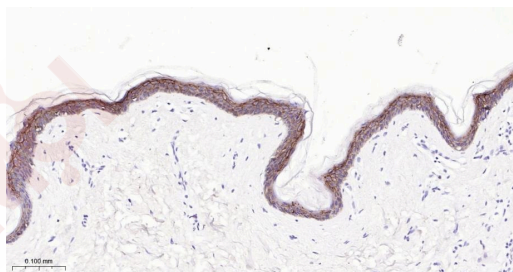
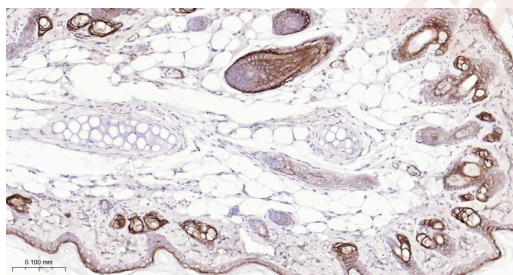
Ig Type:	IgG1
Reactivity:	Human,Mouse,Rat
Molecular Weight:	Theoretical: 23 kDa.
Clone:	2P425
Purification:	Protein G purified

Applications

Verified Activity:

1. Paraformaldehyde-fixed, paraffin embedded Mouse Skin; Antigen retrieval by boiling in sodium citrate buffer (pH6.0) for 15 min; Antibody incubation with CLDN1 Monoclonal Antibody, Unconjugated (TMAB-00437) at 1:200 overnight at 4°C, followed by conjugation to the secondary antibody and DAB staining.
2. Paraformaldehyde-fixed, paraffin embedded Rat Skin; Antigen retrieval by boiling in sodium citrate buffer (pH6.0) for 15 min; Antibody incubation with CLDN1 Monoclonal Antibody, Unconjugated (TMAB-00437) at 1:200 overnight at 4°C, followed by conjugation to the secondary antibody and DAB staining.
3. Paraformaldehyde-fixed, paraffin embedded Human Abdominal skin; Antigen retrieval by boiling in sodium citrate buffer (pH6.0) for 15 min; Antibody incubation with CLDN1 Monoclonal Antibody, Unconjugated (TMAB-00437) at 1:200 overnight at 4°C, followed by conjugation to the secondary antibody and DAB staining.
4. Paraformaldehyde-fixed, paraffin embedded Human Colon Cancer; Antigen retrieval by boiling in sodium citrate buffer (pH6.0) for 15 min; Antibody incubation with CLDN1 Monoclonal Antibody, Unconjugated (TMAB-00437) at 1:200 overnight at 4°C, followed by conjugation to the secondary antibody and DAB staining.
5. Paraformaldehyde-fixed, paraffin embedded Human Esophagus; Antigen retrieval by boiling in sodium citrate buffer (pH6.0) for 15 min; Antibody incubation with CLDN1 Monoclonal Antibody, Unconjugated (TMAB-00437) at 1:200 overnight at 4°C, followed by conjugation to the secondary antibody and DAB staining.
6. Paraformaldehyde-fixed, paraffin embedded Human Uterus; Antigen retrieval by boiling in sodium citrate buffer (pH6.0) for 15 min; Antibody incubation with CLDN1 Monoclonal Antibody, Unconjugated (TMAB-00437) at 1:200 overnight at 4°C, followed by conjugation to the secondary antibody and DAB staining.





Application: IF,IHC-Fr,IHC-P
Recommended IHC-P: 1:50-200; IHC-Fr: 1:50-200; IF: 1:50-200

Properties

Stability & Storage: Store at -20°C or -80°C for 12 months. Avoid repeated freeze-thaw cycles.

Shipping: Shipping with blue ice.

Antigen Details

Immunogen: KLH conjugated synthetic peptide: human CLDN1
Antigen Species: Human
Gene ID: 9076
Uniprot ID: O95832
Synonyms: Claudin-1;SEMP1;Senescence-associated epithelial membrane protein;CLDN1;CLD1
Biology Area: Tight Junctions

Research Background

Tight junctions represent one mode of cell-to-cell adhesion in epithelial or endothelial cell sheets, forming continuous seals around cells and serving as a physical barrier to prevent solutes and water from passing freely through the paracellular space. These junctions are comprised of sets of continuous networking strands in the outwardly facing cytoplasmic leaflet, with complementary grooves in the inwardly facing extracytoplasmic leaflet. The protein encoded by this gene, a member of the claudin family, is an integral membrane protein and a component of tight junction strands. Loss of function mutations result in neonatal ichthyosis-sclerosing cholangitis syndrome. [provided by RefSeq, Jul 2008]

Inhibitor · Natural Compounds · Compound Libraries · Recombinant Proteins

This product is for Research Use Only · Not for Human or Veterinary or Therapeutic Use

Tel:781-999-4286 E_mail:info@targetmol.com Address:34 Washington Street,Wellesley Hills,MA 02481