

## Anti-CILP Polyclonal Antibody

### Product Details

Ig Type:	IgG
Reactivity:	Human, Mouse, Rat (predicted: Cow, Horse, Sheep)
Molecular Weight:	Theoretical: 132 kDa. Actual: 132 kDa.
Purification:	Protein A purified

### Applications

1. Paraformaldehyde-fixed, paraffin embedded (Rat ovary); Antigen retrieval by boiling in sodium citrate buffer (pH6.0) for 15 min; Block endogenous peroxidase by 3% hydrogen peroxide for 20 min; Blocking buffer (normal goat serum) at 37°C for 30 min; Antibody incubation with (CILP) Polyclonal Antibody, Unconjugated (TMAB-00434) at 1:400 overnight at 4°C, followed by operating according to SP Kit (Rabbit) instructions and DAB staining.

2. Sample:

MCF-7 Cell (Human) Lysate at 30 µg

Primary: Anti-CILP (TMAB-00434) at 1/300 dilution

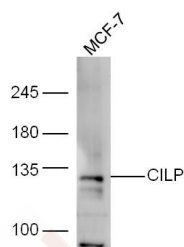
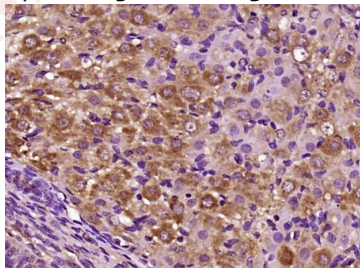
Secondary: IRDye800CW Goat Anti-Rabbit IgG at 1/20000 dilution

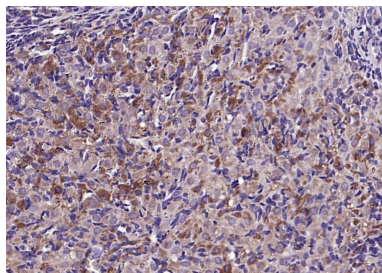
Predicted band size: 132 kDa

Observed band size: 132 kDa

3. Paraformaldehyde-fixed, paraffin embedded (mouse ovary); Antigen retrieval by boiling in sodium citrate buffer (pH6.0) for 15 min; Block endogenous peroxidase by 3% hydrogen peroxide for 20 min; Blocking buffer (normal goat serum) at 37°C for 30 min; Incubation with (CILP) Polyclonal Antibody, Unconjugated (TMAB-00434) at 1:200 overnight at 4°C, followed by operating according to SP Kit (Rabbit) instructions and DAB staining.

Verified Activity:





Application: IF,IHC-Fr,IHC-P,WB

Recommended WB: 1:500-2000; IHC-P: 1:100-500; IHC-Fr: 1:100-500; IF: 1:100-500

---

### Properties

Stability & Storage: Store at -20°C or -80°C for 12 months. Avoid repeated freeze-thaw cycles.

Shipping: Shipping with blue ice.

---

### Antigen Details

Immunogen: KLH conjugated synthetic peptide: human CILP

Antigen Species: Human

Gene ID: 8483

Uniprot ID: O75339

Synonyms: Cartilage intermediate layer protein 1;Cartilage intermediate-layer protein;CILP;CILP-1

Biology Area: Other ECM Proteins,Autoimmune

---

### Research Background

Major alterations in the composition of the cartilage extracellular matrix occur in joint disease, such as osteoarthritis. This gene encodes the cartilage intermediate layer protein (CILP), which increases in early osteoarthritis cartilage. The encoded protein was thought to encode a protein precursor for two different proteins; an N-terminal CILP and a C-terminal homolog of NTPPHase, however, later studies identified no nucleotide pyrophosphatase phosphodiesterase (NPP) activity. The full-length and the N-terminal domain of this protein was shown to function as an IGF-1 antagonist. An allelic variant of this gene has been associated with lumbar disc disease. [provided by RefSeq, Sep 2010]

**Inhibitor · Natural Compounds · Compound Libraries · Recombinant Proteins**

This product is for Research Use Only · Not for Human or Veterinary or Therapeutic Use

Tel:781-999-4286 E\_mail:info@targetmol.com Address:34 Washington Street,Wellesley Hills,MA 02481

---