

Anti-CHRM3 Polyclonal Antibody

Product Details

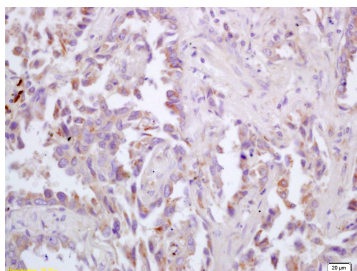
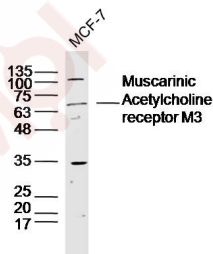
Ig Type: IgG
 Reactivity: Human (predicted:Mouse,Rat)
 Molecular Weight: Theoretical: 65 kDa. Actual: 65 kDa.
 Purification: Protein A purified

Applications

1. Sample: MCF-7 Cell Lysate at 40 µg
 Primary: Anti-Muscarinic Acetylcholine receptor (TMAB-00429) at 1/300 dilution
 Secondary: IRDye800CW Goat Anti-Rabbit IgG at 1/20000 dilution
 Predicted band size: 65 kDa
 Observed band size: 65 kDa

2. Tissue/cell: human lung carcinoma; 4% Paraformaldehyde-fixed and paraffin-embedded;
 Antigen retrieval: citrate buffer (0.01M, pH6.0), Boiling bathing for 15 min; Block endogenous peroxidase by 3% Hydrogen peroxide for 30 min; Blocking buffer (normal goat serum) at 37°C for 20 min;
 Incubation: Anti-ChRM3/Acetylcholine receptor (M3) Polyclonal Antibody, Unconjugated (TMAB-00429) 1:200, overnight at 4°C, followed by conjugation to the secondary antibody and DAb staining

Verified Activity:



Application: IF,IHC-Fr,IHC-P,WB

Recommended WB: 1:500-2000; IHC-P: 1:100-500; IHC-Fr: 1:100-500; IF: 1:100-500

A DRUG SCREENING EXPERT

Properties

Stability & Storage: Store at -20°C or -80°C for 12 months. Avoid repeated freeze-thaw cycles.

Shipping: Shipping with blue ice.

Antigen Details

Immunogen: KLH conjugated synthetic peptide: human ChRM3

Antigen Species: Human

Gene ID: 1131

Uniprot ID: P20309

Synonyms: Muscarinic acetylcholine receptor M3;CHRM3

Biology Area: Muscarinic Receptors,Acetylcholine

Research Background

The muscarinic cholinergic receptors belong to a larger family of G protein-coupled receptors. The functional diversity of these receptors is defined by the binding of acetylcholine and includes cellular responses such as adenylate cyclase inhibition, phosphoinositide degeneration, and potassium channel mediation. Muscarinic receptors influence many effects of acetylcholine in the central and peripheral nervous system. The muscarinic cholinergic receptor 3 controls smooth muscle contraction and its stimulation causes secretion of glandular tissue. [provided by RefSeq].

Inhibitor · Natural Compounds · Compound Libraries · Recombinant Proteins

This product is for Research Use Only · Not for Human or Veterinary or Therapeutic Use

Tel:781-999-4286 E_mail:info@targetmol.com Address:34 Washington Street,Wellesley Hills,MA 02481