

## Anti-Chorionic Gonadotropin/CGA Antibody (3J474)

### Product Details

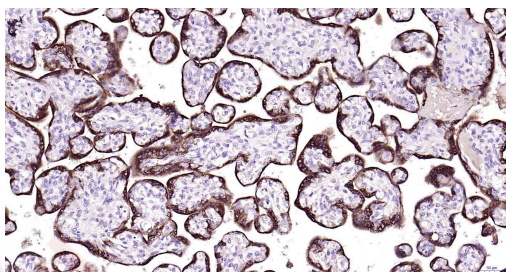
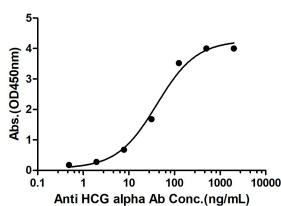
Ig Type:	IgG
Reactivity:	Human
Molecular Weight:	Theoretical: 10 kDa.
Clone:	3J474
Purification:	Protein A purified

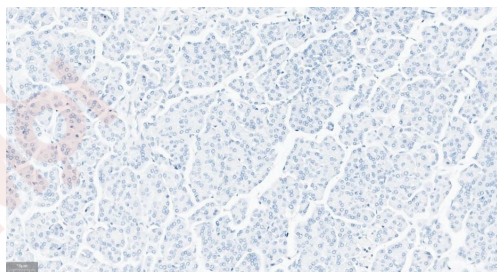
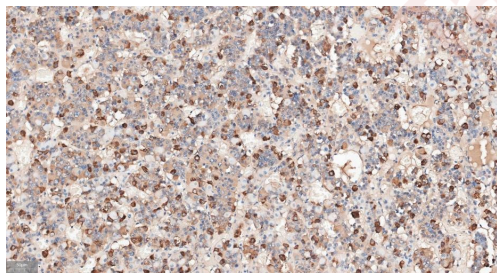
### Applications

1. Measured by its binding ability in a indirect ELISA. Immobilized Human HCG alpha protein, HisTag at 2  $\mu\text{g}/\text{mL}$  (100  $\mu\text{L}/\text{well}$ ) can bind Mouse Anti-Human HCG alpha Antibody, the EC50 is 40.93 ng/mL.
2. Paraformaldehyde-fixed, paraffin embedded Human Placenta; Antigen retrieval by boiling in sodium citrate buffer (pH6.0) for 15 min; Antibody incubation with CGA Monoclonal Antibody, Unconjugated (TMAB-00428) at 1:200 overnight at 4°C, followed by conjugation to the SP Kit (Mouse) and DAB staining.
3. Paraformaldehyde-fixed, paraffin embedded Human pituitary gland; Antigen retrieval by boiling in sodium citrate buffer (pH6.0) for 15 min; Antibody incubation with CGA Monoclonal Antibody, Unconjugated (TMAB-00428) at 1:200 overnight at 4°C, followed by conjugation to the SP Kit (Mouse) and DAB staining.
4. (Negative control) Paraformaldehyde-fixed, paraffin embedded Human Pancreas; Antigen retrieval by boiling in sodium citrate buffer (pH6.0) for 15 min; Antibody incubation with CGA Monoclonal Antibody, Unconjugated (TMAB-00428) at 1:200 overnight at 4°C, followed by conjugation to the SP Kit (Mouse) and DAB staining.

Verified Activity:

Mouse Anti-Human HCG alpha Antibody Bind with Human HCG alpha protein, His Tag





Application: ELISA,IF,IHC-Fr,IHC-P

Recommended IHC-P: 1:100-500; IHC-Fr: 1:100-500; IF: 1:100-500; ELISA: 1:5000-10000

### Properties

Stability & Storage: Store at -20°C or -80°C for 12 months. Avoid repeated freeze-thaw cycles.

Shipping: Shipping with blue ice.

### Antigen Details

Immunogen: Natural human hCG protein

Antigen Species: Human

Gene ID: 1081

Uniprot ID: P01215

Synonyms: FSH alpha;CG- $\alpha$ ;glycoprotein hormones, alpha polypeptide;GPHa;TSHA;glycoprotein hormones,  $\alpha$  polypeptide;CG-ALPHA;FSHA;HCG;FSH  $\alpha$ ;LHA;GPHA1

Biology Area: Hormone biosynthesis,Hormone biosynthesis,Cancer,Gonadotrophic axis,Thyroid axis, Hormones

### Research Background

The four human glycoprotein hormones chorionic gonadotropin (CG), luteinizing hormone (LH), follicle stimulating hormone (FSH), and thyroid stimulating hormone (TSH) are dimers consisting of alpha and beta subunits that are associated noncovalently. The alpha subunits of these hormones are identical, however, their beta chains are unique and confer biological specificity. The protein encoded by this gene is the alpha subunit and belongs to the glycoprotein hormones alpha chain family. Two transcript variants encoding different isoforms have been found for this gene. [provided by RefSeq, Nov 2011]

**Inhibitor · Natural Compounds · Compound Libraries · Recombinant Proteins**

This product is for Research Use Only · Not for Human or Veterinary or Therapeutic Use

Tel:781-999-4286 E\_mail:info@targetmol.com Address:34 Washington Street,Wellesley Hills,MA 02481