

## Anti-YKL-40/CHI3L1 Polyclonal Antibody 2

### Product Details

Ig Type:	IgG
Reactivity:	Human,Mouse,Rat
Molecular Weight:	Theoretical: 42 kDa. Actual: 42 kDa.
Purification:	Protein A purified

### Applications

1. U87MG cell; 4% Paraformaldehyde-fixed; Triton X-100 at room temperature for 20 min; Blocking buffer (normal goat serum) at 37°C for 20 min; Antibody incubation with (CHI3L1) polyclonal Antibody, Unconjugated (TMAB-00426) 1:100, 90 minutes at 37°C; followed by a conjugated Goat Anti-Rabbit IgG antibody at 37°C for 90 minutes, DAPI (blue) was used to stain the cell nucleus.

2. Protein:

Liver (Rat) lysate at 30 µg;

Colon carcinoma (Human) lysates at 30 µg;

Primary: Anti-CGP-39/CHI3L1/YKL-40 (TMAB-00426) at 1:200;

Verified Activity: Secondary: HRP conjugated Goat Anti-Rabbit IgG (secondary antibody) at 1: 3000;

Predicted band size: 42 kDa

Observed band size: 39 kDa

3. Sample:

Lane 1: Mouse Lung tissue lysates

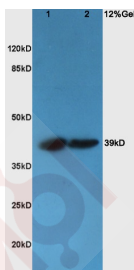
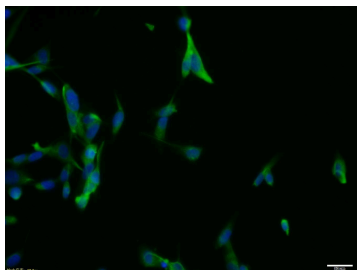
Lane 2: Rat Lung tissue lysates

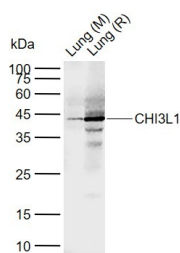
Primary: Anti-CHI3L1 (TMAB-00426) at 1/1000 dilution

Secondary: IRDye800CW Goat Anti-Rabbit IgG at 1/20000 dilution

Predicted band size: 42 kDa

Observed band size: 42 kDa





Application: ICC/IF, WB

Recommended ICC/IF=1:100-500; WB=1:500-2000

## Properties

Stability & Storage: Store at -20°C or -80°C for 12 months. Avoid repeated freeze-thaw cycles.

Shipping: Shipping with blue ice.

## Antigen Details

Immunogen: KLH conjugated synthetic peptide: rat CHI3L1

Antigen Species: Rat

Gene ID: 89824

Uniprot ID: Q9WTV1

Synonyms: chitinase 3 like 1; AW208766; Brp39; gp39

Biology Area: Other ECM Proteins

## Research Background

Chitinases catalyze the hydrolysis of chitin, which is an abundant glycopolymer found in insect exoskeletons and fungal cell walls. The glycoside hydrolase 18 family of chitinases includes eight human family members. This gene encodes a glycoprotein member of the glycosyl hydrolase 18 family. The protein lacks chitinase activity and is secreted by activated macrophages, chondrocytes, neutrophils and synovial cells. The protein is thought to play a role in the process of inflammation and tissue remodeling. [provided by RefSeq, Sep 2009]

**Inhibitor · Natural Compounds · Compound Libraries · Recombinant Proteins**

This product is for Research Use Only · Not for Human or Veterinary or Therapeutic Use

Tel: 781-999-4286 E\_mail: info@targetmol.com Address: 34 Washington Street, Wellesley Hills, MA 02481