

Anti-CH25H Polyclonal Antibody

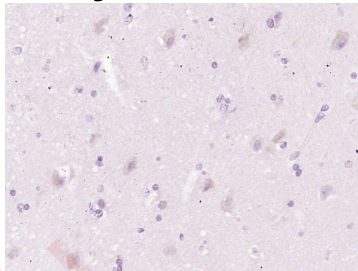
Product Details

Ig Type:	IgG
Reactivity:	Human
Molecular Weight:	Theoretical: 32 kDa.
Purification:	Protein A purified

Applications

Verified Activity:

Paraformaldehyde-fixed, paraffin embedded (human brain glioma); Antigen retrieval by boiling in sodium citrate buffer (pH6.0) for 15 min; Block endogenous peroxidase by 3% hydrogen peroxide for 20 min; Blocking buffer (normal goat serum) at 37°C for 30 min; Antibody incubation with (CH25H) Polyclonal Antibody, Unconjugated (TMAB-00421) at 1:400 overnight at 4°C, followed by operating according to SP Kit (Rabbit) instructions and DAB staining.



Application:	IF,IHC-Fr,IHC-P
Recommended	IHC-P: 1:100-500; IHC-Fr: 1:100-500; IF: 1:100-500

Properties

Stability & Storage:	Store at -20°C or -80°C for 12 months. Avoid repeated freeze-thaw cycles.
Shipping:	Shipping with blue ice.

Antigen Details

Immunogen:	KLH conjugated synthetic peptide: human CH25H
Antigen Species:	Human
Gene ID:	9023
Uniprot ID:	O95992
Synonyms:	h25OH;CH25H;Cholesterol 25 hydroxylase;C25H;EC 1.14.99.38;Cholesterol 25 monooxygenase
Biology Area:	Metabolism of lipids and lipoproteins,Cholesterol Metabolism,Oxidative Stress,Cholesterol Metabolism,Lipid metabolism,Oxidative stress

Research Background

CH25H (Cholesterol 25-hydroxylase), also known as h25OH, is a 272 amino acid endoplasmic membrane protein that belongs to the sterol desaturase family. CH25H contains clusters of histidine residues essential for catalytic activity and is involved in cholesterol and lipid metabolism. CH25H catalyzes the formation of 25-hydroxycholesterol from

A DRUG SCREENING EXPERT

cholesterol leading to the repression of cholesterol biosynthetic enzymes. CH25H regulates lipid metabolism by synthesizing a corepressor that blocks sterol regulatory element binding protein (SREBP) processing. CH25H utilizes diiron cofactors to catalyze the hydroxylation of hydrophobic substrates.

Inhibitor · Natural Compounds · Compound Libraries · Recombinant Proteins

This product is for Research Use Only · Not for Human or Veterinary or Therapeutic Use

Tel:781-999-4286 E_mail:info@targetmol.com Address:34 Washington Street,Wellesley Hills,MA 02481