

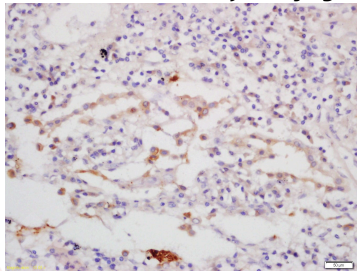
Anti-CGAS Polyclonal Antibody

Product Details

| | |
|-------------------|-----------------------------|
| Ig Type: | IgG |
| Reactivity: | Human (predicted:Mouse,Rat) |
| Molecular Weight: | Theoretical: 59 kDa. |
| Purification: | Protein A purified |

Applications

Verified Activity: Tissue/cell: human lung carcinoma; 4% Paraformaldehyde-fixed and paraffin-embedded; Antigen retrieval: citrate buffer (0.01M, pH6.0), Boiling bathing for 15 min; Block endogenous peroxidase by 3% Hydrogen peroxide for 30 min; Blocking buffer (normal goat serum) at 37°C for 20 min; Incubation: Anti-C6orf150 Polyclonal Antibody, Unconjugated (TMAB-00419) 1:200, overnight at 4°C, followed by conjugation to the secondary antibody and DAb staining.



| | |
|--------------|---|
| Application: | ELISA,IF,IHC-Fr,IHC-P |
| Recommended | IHC-P: 1:100-500; IHC-Fr: 1:400-800; IF: 1:100-500; ELISA: 1:5000-10000 |

Properties

| | |
|----------------------|---|
| Stability & Storage: | Store at -20°C or -80°C for 12 months. Avoid repeated freeze-thaw cycles. |
| Shipping: | Shipping with blue ice. |

Antigen Details

| | |
|------------------|---|
| Immunogen: | KLH conjugated synthetic peptide: human C6orf150 |
| Antigen Species: | Human |
| Gene ID: | 115004 |
| Uniprot ID: | Q8N884 |
| Synonyms: | cGAS;h-cGAS;Cyclic GMP-AMP synthase;C6orf150;cGAMP synthase;2'3'-cGAMP synthase;Mab-21 domain-containing protein 1;MB21D1 |
| Biology Area: | Other Antibodies |

Research Background

Making up nearly 6% of the human genome, chromosome 6 contains around 1,200 genes within 170 million base pairs of sequence. Deletion of a portion of the q arm of chromosome 6 is associated with early onset intestinal cancer suggesting the presence of a cancer susceptibility locus. Porphyria cutanea tarda is associated with

A DRUG SCREENING EXPERT

chromosome 6 through the HFE gene which, when mutated, predisposes an individual to developing this porphyria. Notably, the PARK2 gene, which is associated with Parkinson's disease, and the genes encoding the major histocompatibility complex proteins, which are key molecular components of the immune system and determine predisposition to rheumatic diseases, are also located on chromosome 6. Stickler syndrome, 21-hydroxylase deficiency and maple syrup urine disease are also associated with genes on chromosome 6. A bipolar disorder susceptibility locus has been identified on the q arm of chromosome 6. The C6orf150 gene product has been provisionally designated C6orf150 pending further characterization.

Inhibitor · Natural Compounds · Compound Libraries · Recombinant Proteins

This product is for Research Use Only · Not for Human or Veterinary or Therapeutic Use

Tel:781-999-4286 E_mail:info@targetmol.com Address:34 Washington Street,Wellesley Hills,MA 02481