

Anti-CEBP beta Polyclonal Antibody

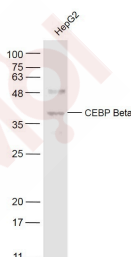
Product Details

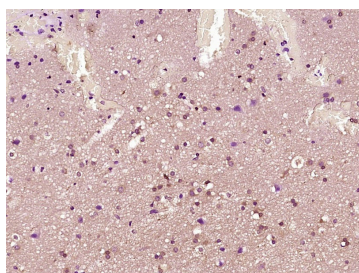
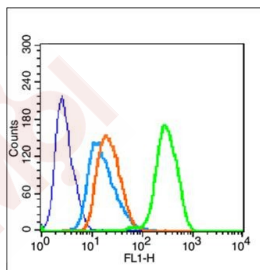
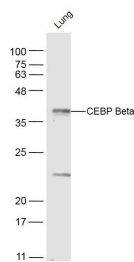
Ig Type: IgG
Reactivity: Human, Mouse (predicted: Rat, Chicken, Pig, Cow, Rabbit, Sheep)
Molecular Weight: Theoretical: 36 kDa. Actual: 36 kDa.
Purification: Protein A purified

Applications

- Sample:**
HepG2 (Human) Cell Lysate at 40 µg
Primary: Anti-CEBP Beta (TMAB-00416) at 1/300 dilution
Secondary: IRDye800CW Goat Anti-Rabbit IgG at 1/20000 dilution
Predicted band size: 36 kDa
Observed band size: 36 kDa
- Sample:**
Lung (Mouse) Lysate at 40 µg
Primary: Anti-CEBP Beta (TMAB-00416) at 1/300 dilution
Secondary: IRDye800CW Goat Anti-Rabbit IgG at 1/20000 dilution
Predicted band size: 36 kDa
Observed band size: 36 kDa
- Blank control (blue line):** Hela
Primary Antibody (green line): Rabbit Anti-CEBP Beta antibody (TMAB-00416)
Dilution: 1 µg/10⁶ cells;
Isotype Control Antibody (orange line): Rabbit IgG.
Secondary Antibody (white blue line): Goat anti-rabbit IgG-FITC
Dilution: 1 µg/test.
Protocol
The cells were fixed with 70% ethanol (Overnight at 4°C) and then permeabilized with 90% ice-cold methanol for 30 min on ice. Cells stained with Primary Antibody for 30 min at room temperature. The cells were then incubated in 1 X PBS/2% BSA/10% goat serum to block non-specific protein-protein interactions followed by the antibody for 15 min at room temperature. The secondary antibody used for 40 min at room temperature.
- Paraformaldehyde-fixed, paraffin embedded (Human brain glioma);** Antigen retrieval by boiling in sodium citrate buffer (pH6.0) for 15 min; Block endogenous peroxidase by 3% hydrogen peroxide for 20 min; Blocking buffer (normal goat serum) at 37°C for 30 min; Antibody incubation with (CEBP Beta) Polyclonal Antibody, Unconjugated (TMAB-00416) at 1:400 overnight at 4°C, followed by operating according to SP Kit (Rabbit) instructions and DAB staining.

Verified Activity:





Application: FCM,IF,IHC-Fr,IHC-P,WB

Recommended WB: 1:500-2000; IHC-P: 1:100-500; IHC-Fr: 1:100-500; IF: 1:100-500; FCM: 1µg/Test

Properties

Stability & Storage: Store at -20°C or -80°C for 12 months. Avoid repeated freeze-thaw cycles.

Shipping: Shipping with blue ice.

Antigen Details

Immunogen: KLH conjugated synthetic peptide: human CEBP Beta

Antigen Species: Human

Gene ID: 1051

Uniprot ID: P17676

Synonyms: IL6DBP;Liver activator protein;SFB;NF IL6;CLEBP beta;AGP/EBP;Nuclear factor NF IL6;C/EBP related protein 2;LAP;C/EBP beta;TCF-5;Transcription factor 5;CCAAT/enhancer-binding protein beta;Interleukin 6 dependent binding protein;CEBPB;CEBP β;TCF5;NFIL6;CRP2;Liver enriched transcriptional activator;CCAAT Enhancer Binding Protein beta;Silencer factor B;IL 6DBP;SF B;C EBP beta

Biology Area: Diabetes associated,Transcription factors,Other factors,Transcription Factors

Research Background

The protein encoded by this intronless gene is a bZIP transcription factor which can bind as a homodimer to certain DNA regulatory regions. It can also form heterodimers with the related proteins CEBP-alpha, CEBP-delta, and CEBP-gamma. The encoded protein is important in the regulation of genes involved in immune and inflammatory responses and has been shown to bind to the IL-1 response element in the IL-6 gene, as well as to regulatory regions of several acute-phase and cytokine genes. In addition, the encoded protein can bind the promoter and

upstream element and stimulate the expression of the collagen type I gene. [provided by RefSeq].

Inhibitor · Natural Compounds · Compound Libraries · Recombinant Proteins

This product is for Research Use Only · Not for Human or Veterinary or Therapeutic Use

Tel:781-999-4286 E_mail:info@targetmol.com Address:34 Washington Street,Wellesley Hills,MA 02481