

## Anti-CEBP alpha Polyclonal Antibody

### Product Details

**Ig Type:** IgG  
**Reactivity:** Mouse,Rat (predicted:Human,Chicken,Dog,Pig,Cow,Horse,Rabbit,Sheep)  
**Molecular Weight:** Theoretical: 39 kDa. Actual: 46 kDa.  
**Purification:** Protein A purified

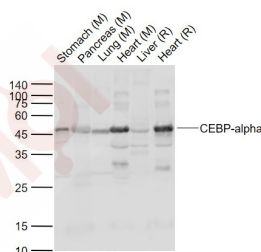
### Applications

#### Sample:

Lane 1: Stomach (Mouse) Lysate at 40 µg  
 Lane 2: Pancreas (Mouse) Lysate at 40 µg  
 Lane 3: Lung (Mouse) Lysate at 40 µg  
 Lane 4: Heart (Mouse) Lysate at 40 µg

#### Verified Activity:

Lane 5: Liver (Rat) Lysate at 40 µg  
 Lane 6: Heart (Rat) Lysate at 40 µg  
 Primary: Anti-CEBP-alpha at 1/1000 dilution  
 Secondary: IRDye800CW Goat Anti-Rabbit IgG at 1/20000 dilution  
 Predicted band size: 45 kDa  
 Observed band size: 46 kDa



**Application:** WB  
**Recommended:** WB: 1:500-2000

### Properties

**Stability & Storage:** Store at -20°C or -80°C for 12 months. Avoid repeated freeze-thaw cycles.  
**Shipping:** Shipping with blue ice.

### Antigen Details

Immunogen:	KLH conjugated synthetic peptide: human CEBP-alpha
Antigen Species:	Human
Gene ID:	1050
Uniprot ID:	P49715
Synonyms:	Caspase 8 precursor;MCH5;C/EBP alpha;CAP4;ICE like apoptotic protease 5;Apoptotic cysteine protease;CEBP $\alpha$ ;FADD homologous ICE/CED 3 like protease;CEBP alpha;CCAAT Enhancer Binding Protein alpha;MACH;FLICE;CEBPA;MORT1 associated CED 3 homolog;Apoptotic protease Mch 5;ICE8;CEBP A;FADD Like ICE
Biology Area:	Signal transduction,Synthesis,Other factors,Transcription Factors,Fatty acid oxidation

---

### Research Background

The protein encoded by this intronless gene is a bZIP transcription factor which can bind as a homodimer to certain promoters and enhancers. It can also form heterodimers with the related proteins CEBP-beta and CEBP-gamma. The encoded protein has been shown to bind to the promoter and modulate the expression of the gene encoding leptin, a protein that plays an important role in body weight homeostasis. Also, the encoded protein can interact with CDK2 and CDK4, thereby inhibiting these kinases and causing growth arrest in cultured cells. [provided by RefSeq, Jul 2008].

**Inhibitor · Natural Compounds · Compound Libraries · Recombinant Proteins**

This product is for Research Use Only · Not for Human or Veterinary or Therapeutic Use

Tel:781-999-4286 E\_mail:info@targetmol.com Address:34 Washington Street,Wellesley Hills,MA 02481