

Anti-CDK2 Polyclonal Antibody

Product Details

Ig Type:	IgG
Reactivity:	Human,Rat (predicted:Mouse,Pig,Cow,Horse,Rabbit)
Molecular Weight:	Theoretical: 33 kDa. Actual: 35 kDa.
Purification:	Protein A purified

Applications

1. Tissue/cell: rat ovary tissue; 4% Paraformaldehyde-fixed and paraffin-embedded; Antigen retrieval: citrate buffer (0.01M, pH6.0), Boiling bathing for 15 min; Block endogenous peroxidase by 3% Hydrogen peroxide for 30 min; Blocking buffer (normal goat serum) at 37°C for 20 min; Incubation: Anti-CDK2 Polyclonal Antibody, Unconjugated (TMAB-00403) 1:200, overnight at 4° C, followed by conjugation to the secondary antibody and DAb staining.

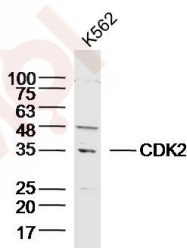
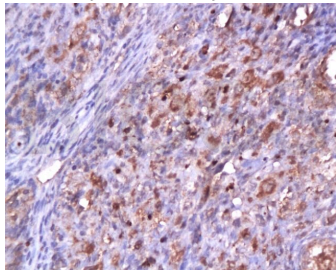
2. Sample: K562 Cell (Human) Lysate at 40 µg
Primary: Anti-CDK2 (TMAB-00403) at 1/300 dilution
Secondary: IRDye800CW Goat Anti-Rabbit IgG at 1/20000 dilution
Predicted band size: 33 kDa

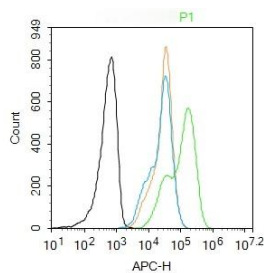
Verified Activity: Observed band size: 35 kDa
3. Blank control: Molt4. Primary Antibody (green line): Rabbit Anti-CDK2 antibody (TMAB-00403)

Dilution: 1 µg/10⁶ cells;
Isotype Control Antibody (orange line): Rabbit IgG.
Secondary Antibody: Goat anti-rabbit IgG-AF647
Dilution: 1 µg/test.

Protocol

The cells were fixed with 4% PFA (10 min at room temperature) and then permeabilized with 0.1% PBST for 20 min at room temperature. The cells were then incubated in 5% BSA to block non-specific protein-protein interactions for 30 min at room temperature. Cells stained with Primary Antibody for 30 min at room temperature. The secondary antibody used for 40 min at





Application: FCM,WB

Recommended WB: 1:500-2000; FCM: 3µg/Test

Properties

Stability & Storage: Store at -20°C or -80°C for 12 months. Avoid repeated freeze-thaw cycles.

Shipping: Shipping with blue ice.

Antigen Details

Immunogen: KLH conjugated synthetic peptide: human CDK2

Antigen Species: Human

Gene ID: 1017

Uniprot ID: P24941

Synonyms: cyclin-dependent kinase 2;p33(CDK2);CDKN2

Biology Area: Cdks,Cdks,Cdks

Research Background

The protein encoded by this gene is a member of the Ser/Thr protein kinase family. This protein kinase is highly similar to the gene products of *S. cerevisiae* cdc28, and *S. pombe* cdc2. It is a catalytic subunit of the cyclin-dependent protein kinase complex, whose activity is restricted to the G1-S phase, and essential for cell cycle G1/S phase transition. This protein associates with and regulated by the regulatory subunits of the complex including cyclin A or E, CDK inhibitor p21Cip1 (CDKN1A) and p27Kip1 (CDKN1B). Its activity is also regulated by its protein phosphorylation. Two alternatively spliced variants and multiple transcription initiation sites of this gene have been reported. [provided by RefSeq, Jul 2008].

Inhibitor · Natural Compounds · Compound Libraries · Recombinant Proteins

This product is for Research Use Only · Not for Human or Veterinary or Therapeutic Use

Tel:781-999-4286 E_mail:info@targetmol.com Address:34 Washington Street,Wellesley Hills,MA 02481