

Anti-CD80 Polyclonal Antibody 2

Product Details

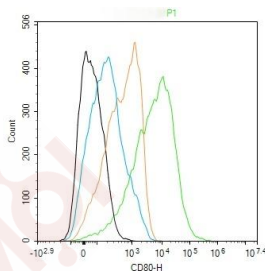
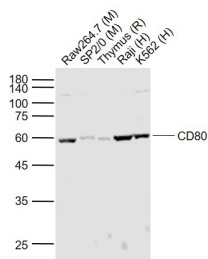
Ig Type: IgG
Reactivity: Human, Mouse, Rat
Molecular Weight: Theoretical: 30 kDa. Actual: 60 kDa.
Purification: Protein A purified

Applications

1. Sample:
 Lane 1: Raw264.7 (Mouse) Cell Lysate at 30 µg
 Lane 2: SP2/0 (Mouse) Cell Lysate at 30 µg
 Lane 3: Thymus (Rat) Lysate at 40 µg
 Lane 4: Raji (Human) Cell Lysate at 30 µg
 Lane 5: K562 (Human) Cell Lysate at 30 µg
Primary: Anti-CD80 (TMAB-00393) at 1/1000 dilution
Secondary: IRDye800CW Goat Anti-Rabbit IgG at 1/20000 dilution
Predicted band size: 30 kDa
Verified Activity: Observed band size: 60 kDa

2. Blank control: Raji.
Primary Antibody (green line): Rabbit Anti-CD80 antibody (TMAB-00393)
Dilution: 2 µg/Test;
Secondary Antibody: Goat anti-rabbit IgG-AF488
Dilution: 0.5 µg/Test.

Protocol
 The cells were incubated in 5% BSA to block non-specific protein-protein interactions for 30 min at room temperature. Cells stained with Primary Antibody for 30 min at room temperature. The secondary antibody used for 40 min at room temperature.



Application: FCM, WB
Recommended: WB: 1:500-2000; FCM: 2µg/Test

Properties

Stability & Storage: Store at -20°C or -80°C for 12 months. Avoid repeated freeze-thaw cycles.

Shipping: Shipping with blue ice.

Antigen Details

Immunogen: KLH conjugated synthetic peptide: rat CD80

Antigen Species: Rat

Synonyms: B7.1;BB1;CD80;B71;CD80 molecule;CD28LG1;B7-1;B7;LAB7

Biology Area: CD,B Lymphocytic Lineage,Dendritic Cell Lineage,Monocytic Lineage

Research Background

CD80 is a member of the Ig superfamily and serves as the ligand for two T cell molecules, CD28 and CTLA4. Interactions between CD28 and CD80 on activated B cells result in enhanced T cell activation. CD80 is rapidly induced on the surface of in vitro activated B cells, Epstein Barr Virus (EBV) transformed B cell lines, Burkitts lymphoma cell lines, freshly isolated follicular B lymphoma cells, T cells, and monocytes. It is also expressed at high levels in dendritic cells. It reacts weakly with a small proportion of non activated normal B cells and with HTLV1 infected T cells. CD80 does not react with peripheral monocytes, resting and activated normal T cells, T cell lines and T cell clones, nor with myelomonocytic cell lines.

Inhibitor · Natural Compounds · Compound Libraries · Recombinant Proteins

This product is for Research Use Only · Not for Human or Veterinary or Therapeutic Use

Tel:781-999-4286 E_mail:info@targetmol.com Address:34 Washington Street,Wellesley Hills,MA 02481