

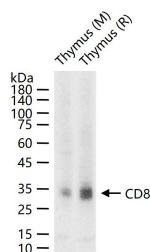
## Anti-CD8 alpha Polyclonal Antibody 3

## Product Details

Ig Type:	IgG
Reactivity:	Mouse,Rat
Molecular Weight:	Theoretical: 27 kDa. Actual: 34 kDa.
Purification:	Protein A purified

## Applications

Verified Activity: 25 µg total protein per Lane of various lysates probed with CD8 polyclonal antibody, unconjugated (TMAB-00390) at 1:1000 dilution and 4°C overnight incubation. Followed by conjugated secondary antibody incubation at RT for 60 min.



Application:	WB
Recommended	WB: 1:500-2000

## Properties

Stability & Storage: Store at -20°C or -80°C for 12 months. Avoid repeated freeze-thaw cycles.  
Shipping: Shipping with blue ice.

## Antigen Details

Immunogen:	KLH conjugated synthetic peptide: rat CD8
Antigen Species:	Rat
Synonyms:	Leu2;CD8;CD8a molecule;CD8 α/CD8A;OKT8 T-cell antigen;Lyt-2;MAL;CD8a;p32
Biology Area:	Cytotoxic Cells,CD,CD markers

## Research Background

The CD8 antigen is a cell surface glycoprotein found on most cytotoxic T lymphocytes that mediates efficient cell-cell interactions within the immune system. The CD8 antigen acts as a coreceptor with the T-cell receptor on the T lymphocyte to recognize antigens displayed by an antigen presenting cell in the context of class I MHC molecules. The coreceptor functions as either a homodimer composed of two alpha chains or as a heterodimer composed of one alpha and one beta chain. Both alpha and beta chains share significant homology to immunoglobulin variable light chains. This gene encodes the CD8 alpha chain. Multiple transcript variants encoding different isoforms have been found for this gene. The major protein isoforms of this gene differ by the presence or absence of a transmembrane domain and thus differ in being a membrane-anchored or secreted protein. [provided by RefSeq, May 2020]

**Inhibitor · Natural Compounds · Compound Libraries · Recombinant Proteins**

This product is for Research Use Only · Not for Human or Veterinary or Therapeutic Use

Tel:781-999-4286 E\_mail:info@targetmol.com Address:34 Washington Street,Wellesley Hills,MA 02481