

Anti-CD8 alpha Polyclonal Antibody

Product Details

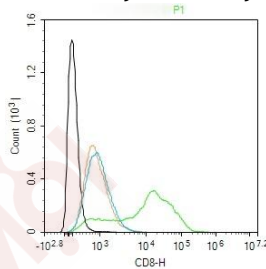
Ig Type: IgG
Reactivity: Human (predicted:Mouse)
Molecular Weight: Theoretical: 27 kDa. Actual: 32 kDa.
Purification: Protein A purified

Applications

Blank control: Molt-4. Primary Antibody (green line): Rabbit Anti-CD8 antibody (TMAB-00388)
Dilution: 2 µg/Test;
Secondary Antibody (white blue line): Goat anti-rabbit IgG-FITC
Dilution: 0.5 µg/Test.

Verified Activity: Isotype control (orange line): Normal Rabbit IgG
Protocol

The cells were incubated in 5% BSA to block non-specific protein-protein interactions for 30 min at room temperature. Cells stained with Primary Antibody for 30 min at room temperature. The secondary antibody used for 40 min at room temperature.



Application: FCM
Recommended FCM: 2ug/Test

Properties

Stability & Storage: Store at -20°C or -80°C for 12 months. Avoid repeated freeze-thaw cycles.
Shipping: Shipping with blue ice.

Antigen Details

Immunogen: KLH conjugated synthetic peptide: mouse CD8
Antigen Species: Mouse
Gene ID: 12525
Uniprot ID: P01731
Synonyms: CD8 α;Ly-35;Lyt-2;BB154331;Ly-B;Ly-2;CD8a molecule
Biology Area: Cytotoxic Cells,CD,CD markers

Research Background

The CD8 antigen is a cell surface glycoprotein found on most cytotoxic T lymphocytes that mediates efficient cell-cell interactions within the immune system. The CD8 antigen acts as a coreceptor with the T-cell receptor on the T lymphocyte to recognize antigens displayed by an antigen presenting cell in the context of class I MHC molecules. The coreceptor functions as either a homodimer composed of two alpha chains or as a heterodimer composed of one alpha and one beta chain. Both alpha and beta chains share significant homology to immunoglobulin variable light chains. This gene encodes the CD8 alpha chain. Multiple transcript variants encoding different isoforms have been found for this gene. The major protein isoforms of this gene differ by the presence or absence of a transmembrane domain and thus differ in being a membrane-anchored or secreted protein. [provided by RefSeq, May 2020]

Inhibitor · Natural Compounds · Compound Libraries · Recombinant Proteins

This product is for Research Use Only · Not for Human or Veterinary or Therapeutic Use

Tel:781-999-4286 E_mail:info@targetmol.com Address:34 Washington Street,Wellesley Hills,MA 02481