

## Anti-CD69 Polyclonal Antibody

### Product Details

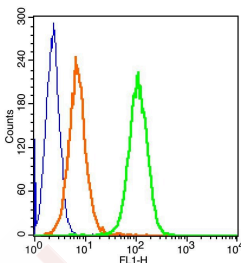
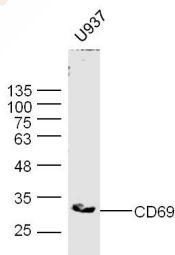
Ig Type: IgG  
Reactivity: Human, Mouse (predicted: Rat, Dog)  
Molecular Weight: Theoretical: 22 kDa. Actual: 30 kDa.  
Purification: Protein A purified

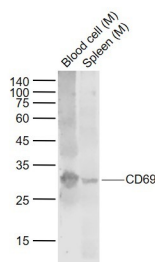
### Applications

1. Sample: U937 Cell Lysate at 30 µg  
Primary: Anti-CD69 (TMAB-00385) at 1/300 dilution  
Secondary: IRDye800CW Goat Anti-Rabbit IgG at 1/20000 dilution  
Predicted band size: 22 kDa  
Observed band size: 34 kDa

2. Blank control (blue): Molt-4 Cells (fixed with 2% paraformaldehyde (10 min)). Primary Antibody: Rabbit Anti-CD69/FITC Conjugated antibody (TMAB-00385/FITC), Dilution: 1 µg in 100 µL 1X PBS containing 0.5% BSA; Isotype Control Antibody: Rabbit IgG/FITC (orange), used under the same conditions.

3. Sample:  
Lane 1: Blood cell (Mouse) Lysate at 40 µg  
Lane 2: Spleen (Mouse) Lysate at 40 µg  
Primary: Anti-CD69 (TMAB-00385) at 1/1000 dilution  
Secondary: IRDye800CW Goat Anti-Rabbit IgG at 1/20000 dilution  
Predicted band size: 33/27 kDa  
Observed band size: 30 kDa





Application: FCM,WB

Recommended WB: 1:500-2000; FCM: 1µg/Test

### Properties

Stability & Storage: Store at -20°C or -80°C for 12 months. Avoid repeated freeze-thaw cycles.

Shipping: Shipping with blue ice.

### Antigen Details

Immunogen: KLH conjugated synthetic peptide: human CD69

Antigen Species: Human

Gene ID: 969

Uniprot ID: Q07108

Synonyms: VEA;AIM;AI452015;5830438K24Rik;CD69 molecule

Biology Area: T Lymphocytic Lineage,NK Cell Lineage,B Lymphocytic Lineage,NK Cells,CD,Regulatory T Cells

### Research Background

This gene encodes a member of the calcium dependent lectin superfamily of type II transmembrane receptors. Expression of the encoded protein is induced upon activation of T lymphocytes, and may play a role in proliferation. Furthermore, the protein may act to transmit signals in natural killer cells and platelets. [provided by RefSeq, Aug 2011]

**Inhibitor · Natural Compounds · Compound Libraries · Recombinant Proteins**

This product is for Research Use Only · Not for Human or Veterinary or Therapeutic Use

Tel:781-999-4286 E\_mail:info@targetmol.com Address:34 Washington Street,Wellesley Hills,MA 02481