

## Anti-CD68 Antibody (2P747)

## Product Details

Ig Type:	IgG
Reactivity:	Human
Molecular Weight:	Theoretical: 37 kDa.
Clone:	2P747
Purification:	Protein A purified

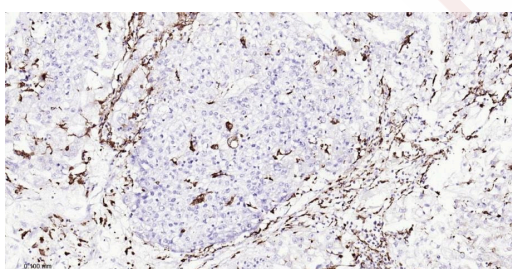
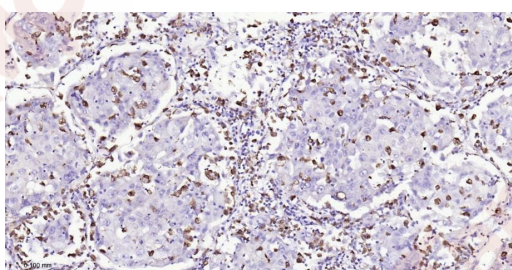
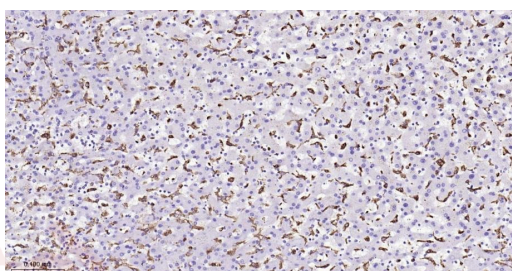
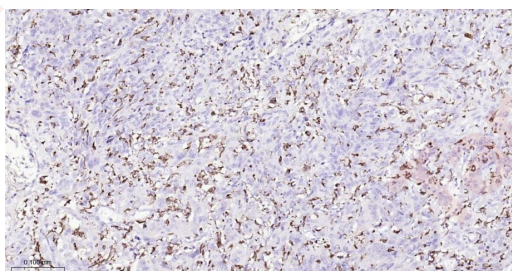
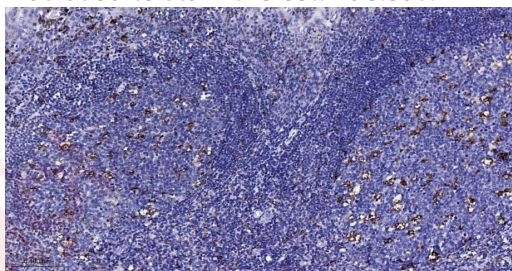
## Applications

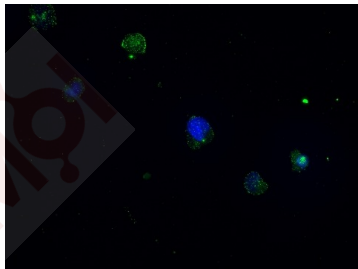
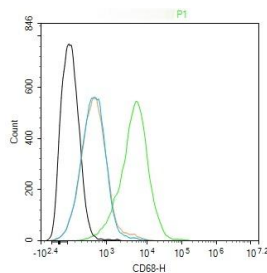
## Verified Activity:

1. Paraformaldehyde-fixed, paraffin embedded (human tonsil); Antigen retrieval by boiling in sodium citrate buffer (pH6.0) for 15 min; Block endogenous peroxidase by 3% hydrogen peroxide for 20 min; Blocking buffer (normal goat serum) at 37°C for 30 min; Antibody incubation with (CD68) Monoclonal Antibody, Unconjugated (TMAB-00384) at 1:200 overnight at 4°C, followed by operating according to SP Kit (Rabbit) instructions and DAB staining.
2. Paraformaldehyde-fixed, paraffin embedded (human cervical carcinoma); Antigen retrieval by boiling in sodium citrate buffer (pH6.0) for 15 min; Block endogenous peroxidase by 3% hydrogen peroxide for 20 min; Blocking buffer (normal goat serum) at 37°C for 30 min; Antibody incubation with (CD68) Monoclonal Antibody, Unconjugated (TMAB-00384) at 1:200 overnight at 4°C, followed by operating according to SP Kit (Rabbit) instructions and DAB staining.
3. Paraformaldehyde-fixed, paraffin embedded (human liver); Antigen retrieval by boiling in sodium citrate buffer (pH6.0) for 15 min; Block endogenous peroxidase by 3% hydrogen peroxide for 20 min; Blocking buffer (normal goat serum) at 37°C for 30 min; Antibody incubation with (CD68) Monoclonal Antibody, Unconjugated (TMAB-00384) at 1:200 overnight at 4°C, followed by operating according to SP Kit (Rabbit) instructions and DAB staining.
4. Paraformaldehyde-fixed, paraffin embedded (human lung carcinoma); Antigen retrieval by boiling in sodium citrate buffer (pH6.0) for 15 min; Block endogenous peroxidase by 3% hydrogen peroxide for 20 min; Blocking buffer (normal goat serum) at 37°C for 30 min; Antibody incubation with (CD68) Monoclonal Antibody, Unconjugated (TMAB-00384) at 1:200 overnight at 4°C, followed by operating according to SP Kit (Rabbit) instructions and DAB staining.
5. Paraformaldehyde-fixed, paraffin embedded (human endometrial carcinoma); Antigen retrieval by boiling in sodium citrate buffer (pH6.0) for 15 min; Block endogenous peroxidase by 3% hydrogen peroxide for 20 min; Blocking buffer (normal goat serum) at 37°C for 30 min; Antibody incubation with (CD68) Monoclonal Antibody, Unconjugated (TMAB-00384) at 1:200 overnight at 4°C, followed by operating according to SP Kit (Rabbit) instructions and DAB staining.
6. Blank control: THP-1. Primary Antibody (green line): Rabbit Anti-CD68 antibody (TMAB-00384)  
Dilution: 1 µg/Test;  
Secondary Antibody (white blue line): Goat anti-rabbit IgG-AF488  
Dilution: 0.5 µg/Test.  
Isotype control (orange line): Normal Rabbit IgG  
Protocol  
The cells were incubated in 5% BSA to block non-specific protein-protein interactions for 30 min

at room temperature. Cells stained with Primary Antibody for 30 min at room temperature. The secondary antibody used for 40 min at room temperature.

7. 4% Paraformaldehyde-fixed THP-1 (H) cell; Triton X-100 at RT for 20 min; Antibody incubation with (CD68) monoclonal Antibody, unconjugated (TMAB-00384) 1:100, 90 min at 37°C; followed by conjugated Goat Anti-Rabbit IgG antibody (green) at 37°C for 90 min, DAPI (blue) was used to stain the cell nucleus.





Application: FCM,IF,IHC-Fr,IHC-P

Recommended FCM=1 µg/Test; IF=1:500-1000; IHC-Fr=1:500-1000; IHC-P=1:500-1000

## Properties

Stability & Storage: Store at -20°C or -80°C for 12 months. Avoid repeated freeze-thaw cycles.

Shipping: Shipping with blue ice.

## Antigen Details

Immunogen: KLH conjugated synthetic peptide: human CD68

Antigen Species: Human

Gene ID: 968

Uniprot ID: P34810

Synonyms: CD68 molecule;SCARD1;LAMP4;GP110

Biology Area: Myeloid Cells,SARS Coronavirus

## Research Background

This gene encodes a 110-kD transmembrane glycoprotein that is highly expressed by human monocytes and tissue macrophages. It is a member of the lysosomal/endosomal-associated membrane glycoprotein (LAMP) family. The protein primarily localizes to lysosomes and endosomes with a smaller fraction circulating to the cell surface. It is a type I integral membrane protein with a heavily glycosylated extracellular domain and binds to tissue- and organ-specific lectins or selectins. The protein is also a member of the scavenger receptor family. Scavenger receptors typically function to clear cellular debris, promote phagocytosis, and mediate the recruitment and activation of macrophages. Alternative splicing results in multiple transcripts encoding different isoforms. [provided by RefSeq, Jul 2008]

**Inhibitor · Natural Compounds · Compound Libraries · Recombinant Proteins**

This product is for Research Use Only · Not for Human or Veterinary or Therapeutic Use

Tel:781-999-4286 E\_mail:info@targetmol.com Address:34 Washington Street,Wellesley Hills,MA 02481