

Anti-CD68 Polyclonal Antibody 3

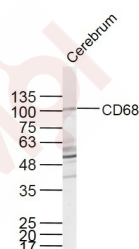
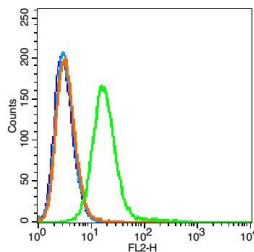
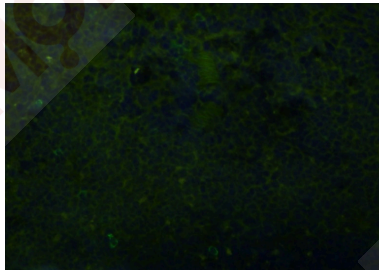
Product Details

Ig Type: IgG
Reactivity: Mouse,Rat (predicted:Pig)
Molecular Weight: Theoretical: 37 kDa. Actual: 110 kDa.
Purification: Protein A purified

Applications

Verified Activity:

- OCT embedded (Rat spleen), acetone-fixed; Blocking buffer (normal goat serum) at 37°C for 30 min; Antibody incubation with (CD68) Polyclonal Antibody, Unconjugated (TMAB-00383) at 1:400 overnight at 4°C, followed by a conjugated secondary antibody for 90 minutes, and DAPI for nucleus staining.
- Blank control: RSC96 cells (blue). Primary Antibody: Rabbit Anti-CD68 antibody (TMAB-00383), Dilution: 1 µg in 100 µL 1X PBS containing 0.5% BSA; Isotype Control Antibody: Rabbit IgG (orange),used under the same conditions. Secondary Antibody: Goat anti-rabbit IgG-Pe (white blue), Dilution: 1:200 in 1 X PBS containing 0.5% BSA.
- Sample:
Cerebrum (Mouse) Lysate at 40 µg
Primary: Anti-CD68 (TMAB-00383) at 1/300 dilution
Secondary: IRDye800CW Goat Anti-Rabbit IgG at 1/20000 dilution
Predicted band size: 37 kDa
Observed band size: 110 kDa



A DRUG SCREENING EXPERT

Application: IF,IHC-Fr,IHC-P,WB

Recommended IF=1:100-500; IHC-Fr=1:100-500; IHC-P=1:100-500; WB=1:500-2000

Properties

Stability & Storage: Store at -20°C or -80°C for 12 months. Avoid repeated freeze-thaw cycles.

Shipping: Shipping with blue ice.

Antigen Details

Immunogen: KLH conjugated synthetic peptide: mouse CD68

Antigen Species: Mouse

Gene ID: 12514

Uniprot ID: P31996

Synonyms: SCARD1;CD68 molecule;GP110;LAMP4

Biology Area: Myeloid Cells,SARS Coronavirus

Research Background

This gene encodes a 110-kD transmembrane glycoprotein that is highly expressed by human monocytes and tissue macrophages. It is a member of the lysosomal/endosomal-associated membrane glycoprotein (LAMP) family. The protein primarily localizes to lysosomes and endosomes with a smaller fraction circulating to the cell surface. It is a type I integral membrane protein with a heavily glycosylated extracellular domain and binds to tissue- and organ-specific lectins or selectins. The protein is also a member of the scavenger receptor family. Scavenger receptors typically function to clear cellular debris, promote phagocytosis, and mediate the recruitment and activation of macrophages. Alternative splicing results in multiple transcripts encoding different isoforms. [provided by RefSeq, Jul 2008]

Inhibitor · Natural Compounds · Compound Libraries · Recombinant Proteins

This product is for Research Use Only · Not for Human or Veterinary or Therapeutic Use

Tel:781-999-4286 E_mail:info@targetmol.com Address:34 Washington Street,Wellesley Hills,MA 02481
