

Anti-CD64 Polyclonal Antibody

Product Details

Ig Type: IgG
 Reactivity: Human, Mouse, Rat
 Molecular Weight: Theoretical: 41 kDa. Actual: 70 kDa.
 Purification: Protein A purified

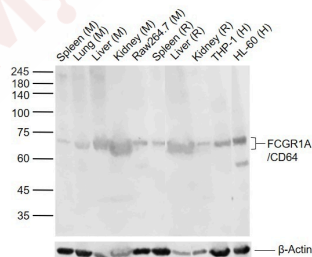
Applications

Sample:

Lane 1: Mouse Spleen tissue lysates
 Lane 2: Mouse Lung tissue lysates
 Lane 3: Mouse Liver tissue lysates
 Lane 4: Mouse Kidney tissue lysates
 Lane 5: Mouse Raw264.7 cell lysates
 Lane 6: Rat Spleen tissue lysates

Verified Activity:

Lane 7: Rat Liver tissue lysates
 Lane 8: Rat Kidney tissue lysates
 Lane 9: Human THP-1 cell lysates
 Lane 10: Human HL60 cell lysates
 Primary: Anti-FCGR1A/CD64 (TMAB-00379) at 1/1000 dilution
 Secondary: IRDye800CW Goat Anti-Rabbit IgG at 1/20000 dilution
 Predicted band size: 41 kDa
 Observed band size: 70 kDa



Application: ELISA, ICC/IF, WB

Recommended ELISA=1:5000-10000; ICC/IF=1:50-200; WB=1:500-2000

Properties

Stability & Storage: Store at -20°C or -80°C for 12 months. Avoid repeated freeze-thaw cycles.

Shipping: Shipping with blue ice.

Antigen Details

Immunogen:	KLH conjugated synthetic peptide: human CD64/IGFR1
Antigen Species:	Human
Gene ID:	2209
Uniprot ID:	P12314
Synonyms:	Fcr;FCGR1A;FCRI;FcERI;FCE1A;Fc gamma RI;FCGR1;Fc-gamma RIA;FcRIA;Fc γ RI/CD64;CD64a;Fcgr;FLJ18345;CD64;Fc γ RI;IGFR1;FCG1;Fc-γ RIA;FcγRI
Biology Area:	Myeloid Cells,IgG,Fc Receptors

Research Background

This gene encodes a protein that plays an important role in the immune response. This protein is a high-affinity Fc-gamma receptor. The gene is one of three related gene family members located on chromosome 1. [provided by RefSeq, Jul 2008]

Inhibitor · Natural Compounds · Compound Libraries · Recombinant Proteins

This product is for Research Use Only · Not for Human or Veterinary or Therapeutic Use

Tel:781-999-4286 E_mail:info@targetmol.com Address:34 Washington Street,Wellesley Hills,MA 02481