

## Anti-CD47 Polyclonal Antibody

### Product Details

Ig Type: IgG  
Reactivity: Human, Mouse, Rat (predicted: Rabbit)  
Molecular Weight: Theoretical: 33 kDa. Actual: 47 kDa.  
Purification: Protein A purified

### Applications

1. Blank control: RSC96 (blue), the cells were fixed with 2% paraformaldehyde (10 min).  
Isotype Control Antibody: Rabbit IgG (orange);  
Secondary Antibody: Goat anti-rabbit IgG-FITC (white blue),  
Dilution: 1:100 in 1 X PBS containing 0.5% BSA;  
Primary Antibody Dilution: 1 µg in 100 µL 1X PBS containing 0.5% BSA (green).

2. Sample:

Lane 1: Heart (Mouse) Lysate at 40 µg  
Lane 2: Kidney (Mouse) Lysate at 40 µg  
Primary: Anti-CD47 (TMAB-00375) at 1/1000 dilution  
Secondary: IRDye800CW Goat Anti-Rabbit IgG at 1/20000 dilution  
Predicted band size: 47 kDa  
Observed band size: 47 kDa

3. Blank control: MCF-7. Primary Antibody (green line): Rabbit Anti-CD47 antibody (TMAB-00375)

Verified Activity: Dilution: 2 µg/Test;  
Secondary Antibody: Goat anti-rabbit IgG-FITC  
Dilution: 0.5 µg/Test.

Protocol

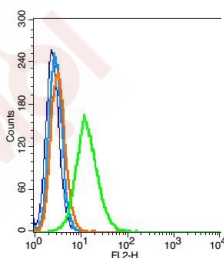
The cells were incubated in 5% BSA to block non-specific protein-protein interactions for 30 min at room temperature. Cells stained with Primary Antibody for 30 min at room temperature. The secondary antibody used for 40 min at room temperature.

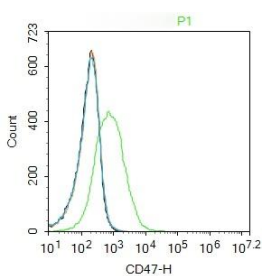
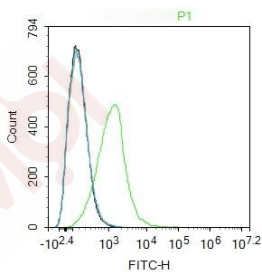
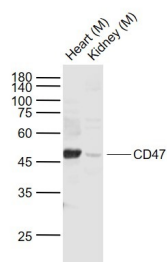
4. Blank control: MCF-7. Primary Antibody (green line): Rabbit Anti-CD47 antibody (TMAB-00375)

Dilution: 2 µg/Test;  
Secondary Antibody: Goat anti-rabbit IgG-FITC  
Dilution: 0.5 µg/Test.

Protocol

The cells were incubated in 5% BSA to block non-specific protein-protein interactions for 30 min at room temperature. Cells stained with Primary Antibody for 30 min at room temperature. The secondary antibody used for 40 min at room temperature.





Application: FCM, WB

Recommended WB: 1:500-2000; FCM: 2 $\mu$ g/Test

## Properties

Stability & Storage: Store at -20°C or -80°C for 12 months. Avoid repeated freeze-thaw cycles.

Shipping: Shipping with blue ice.

## Antigen Details

Immunogen: KLH conjugated synthetic peptide: human CD47/MER6

Antigen Species: Human

Gene ID: 961

Uniprot ID: Q08722

Synonyms: CD47 molecule; IAP; OA3; MER6

Biology Area: CD markers, Adhesion

## Research Background

This gene encodes a membrane protein, which is involved in the increase in intracellular calcium concentration that occurs upon cell adhesion to extracellular matrix. The encoded protein is also a receptor for the C-terminal cell binding domain of thrombospondin, and it may play a role in membrane transport and signal transduction. This gene has broad tissue distribution, and is reduced in expression on Rh erythrocytes. Alternatively spliced transcript variants have been found for this gene. [provided by RefSeq, Jul 2010]

**Inhibitor · Natural Compounds · Compound Libraries · Recombinant Proteins**

This product is for Research Use Only · Not for Human or Veterinary or Therapeutic Use

Tel:781-999-4286 E\_mail:info@targetmol.com Address:34 Washington Street,Wellesley Hills,MA 02481