

Anti-CD44 Polyclonal Antibody 3

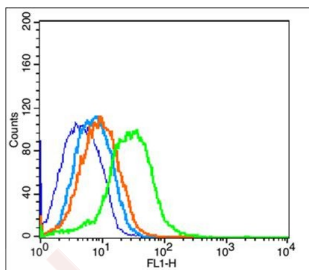
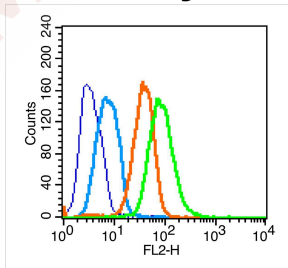
Product Details

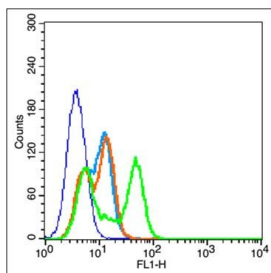
Ig Type:	IgG
Reactivity:	Human, Mouse (predicted: Rat, Dog, Cow, Horse, Rabbit, Sheep)
Molecular Weight:	Theoretical: 85 kDa.
Purification:	Protein A purified

Applications

1. Blank control (blue line): U251 (fixed with 70% ethanol overnight at 4°C and then permeabilized with 0.1% PBS-Tween for 20 min at room temperature).
 Primary Antibody (green line): Rabbit Anti-CD44 antibody (TMAB-00371), Dilution: 1 µg/10⁶ cells;
 Isotype Control Antibody (orange line): Rabbit IgG.
 Secondary Antibody (white blue line): Goat anti-rabbit IgG-PE, Dilution: 1 µg/test.
2. Blank control (blue): Mouse spleen (fixed with 2% paraformaldehyde for 10 min at 37°C).
 Primary Antibody: Rabbit Anti-CD44 antibody (TMAB-00371, Green); Dilution: 1 µg in 100 µL 1X PBS containing 0.5% BSA; Isotype Control Antibody: Rabbit IgG (orange), used under the same conditions; Secondary Antibody: Goat anti-rabbit IgG-FITC (white blue), Dilution: 1:200 in 1 X PBS containing 0.5% BSA.
3. Blank control (blue): A549 (fixed with 2% paraformaldehyde for 10 min at 37°C). Primary Antibody: Rabbit Anti-CD44 antibody (TMAB-00371, Green); Dilution: 1 µg in 100 µL 1X PBS containing 0.5% BSA; Isotype Control Antibody: Rabbit IgG (orange), used under the same conditions; Secondary Antibody: Goat anti-rabbit IgG-FITC (white blue), Dilution: 1:200 in 1 X PBS containing 0.5% BSA.

Verified Activity:





Application: FCM

Recommended FCM: 1µg/Test

Properties

Stability & Storage: Store at -20°C or -80°C for 12 months. Avoid repeated freeze-thaw cycles.

Shipping: Shipping with blue ice.

Antigen Details

Immunogen: KLH conjugated synthetic peptide: mouse CD44/HCAM/PGP1

Antigen Species: Mouse

Gene ID: 12505

Uniprot ID: P15379

Synonyms: MIC4;LHR;HCELL;IN;CDW44;MDU3;ECMR-III;MC56;CSPG8;CD44 molecule (Indian blood group); MDU2;HUTCH-I;Pgp1

Biology Area: Tumor biomarkers,CD markers,Adhesion,CD markers ELISA kits,T Lymphocytic Lineage,Dendritic Cell Lineage,Neutrophil Lineage,Surface Molecules

Research Background

The protein encoded by this gene is a cell-surface glycoprotein involved in cell-cell interactions, cell adhesion and migration. It is a receptor for hyaluronic acid (HA) and can also interact with other ligands, such as osteopontin, collagens, and matrix metalloproteinases (MMPs). This protein participates in a wide variety of cellular functions including lymphocyte activation, recirculation and homing, hematopoiesis, and tumor metastasis. Transcripts for this gene undergo complex alternative splicing that results in many functionally distinct isoforms, however, the full length nature of some of these variants has not been determined. Alternative splicing is the basis for the structural and functional diversity of this protein, and may be related to tumor metastasis. [provided by RefSeq, Jul 2008].

Inhibitor · Natural Compounds · Compound Libraries · Recombinant Proteins

This product is for Research Use Only · Not for Human or Veterinary or Therapeutic Use

Tel:781-999-4286 E_mail:info@targetmol.com Address:34 Washington Street,Wellesley Hills,MA 02481