

Anti-CD44 Polyclonal Antibody 2

Product Details

Ig Type: IgG
Reactivity: Human (predicted:Mouse,Rat,Chicken,Pig,Cow,Rabbit)
Molecular Weight: Theoretical: 53 kDa.
Purification: Protein A purified

Applications

1. Blank control (blue): U251 (fixed with Ice-cold 70% ethanol overnight at 4°C). Primary Antibody: Rabbit Anti-CD44 antibody (TMAB-00370,Green); Dilution: 1 µg in 100 µL 1X PBS containing 0.5% BSA; Isotype Control Antibody: Rabbit IgG (orange), used under the same conditions; Secondary Antibody: Goat anti-rabbit IgG-FITC (white blue), Dilution: 1:200 in 1 X PBS containing 0.5% BSA.

2. Blank control: HELA.

Primary Antibody (green line): Rabbit Anti-CD44 antibody (TMAB-00370)

Verified Activity: Dilution: 1 µg/10⁶ cells;

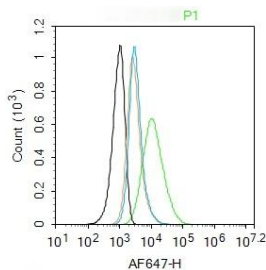
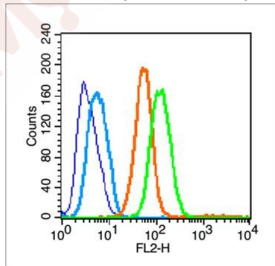
Isotype Control Antibody (orange line): Rabbit IgG.

Secondary Antibody: Goat anti-rabbit IgG-AF647

Dilution: 1 µg/test.

Protocol

The cells were incubated in 5% BSA to block non-specific protein-protein interactions for 30 min at room temperature. Cells stained with Primary Antibody for 30 min at room temperature. The secondary antibody used for 40 min at room temperature.



Application: FCM

Recommended FCM: 1µg/Test

Properties

Stability & Storage: Store at -20°C or -80°C for 12 months. Avoid repeated freeze-thaw cycles.

Shipping: Shipping with blue ice.

Antigen Details

Immunogen: KLH conjugated synthetic peptide: rat CD44v6

Antigen Species: Rat

Gene ID: 25406

Uniprot ID: P26051

Synonyms: LHR;HUTCH-I;CDW44;MC56;MDU2;CSPG8;MDU3;Pgp1;ECMR-III;HCELL;MIC4;CD44 molecule (Indian blood group);IN

Biology Area: Tumor biomarkers,CD markers,Adhesion,CD markers ELISA kits,T Lymphocytic Lineage,Dendritic Cell Lineage,Neutrophil Lineage,Surface Molecules

Research Background

The protein encoded by this gene is a cell-surface glycoprotein involved in cell-cell interactions, cell adhesion and migration. It is a receptor for hyaluronic acid (HA) and can also interact with other ligands, such as osteopontin, collagens, and matrix metalloproteinases (MMPs). This protein participates in a wide variety of cellular functions including lymphocyte activation, recirculation and homing, hematopoiesis, and tumor metastasis. Transcripts for this gene undergo complex alternative splicing that results in many functionally distinct isoforms, however, the full length nature of some of these variants has not been determined. Alternative splicing is the basis for the structural and functional diversity of this protein, and may be related to tumor metastasis. [provided by RefSeq, Jul 2008].

Inhibitor · Natural Compounds · Compound Libraries · Recombinant Proteins

This product is for Research Use Only · Not for Human or Veterinary or Therapeutic Use

Tel:781-999-4286 E_mail:info@targetmol.com Address:34 Washington Street,Wellesley Hills,MA 02481