

Anti-CD44 Antibody (4R653)

Product Details

Ig Type:	IgG2a
Reactivity:	Human
Molecular Weight:	Theoretical: 85 kDa. Actual: 65-85 kDa.
Clone:	4R653
Purification:	Protein G purified

Applications

1. Paraformaldehyde-fixed, paraffin embedded (Human pancreatic cancer); Antigen retrieval by boiling in sodium citrate buffer (pH6.0) for 15 min; Block endogenous peroxidase by 3% hydrogen peroxide for 20 min; Blocking buffer (normal goat serum) at 37°C for 30 min; Antibody incubation with (CD44) Monoclonal Antibody, Unconjugated (TMAB-00368) at 1:400 overnight at 4°C, followed by operating according to SP Kit (Mouse) instructions and DAB staining.

2. Blank control: Hela.

Primary Antibody (green line): Mouse Anti-CD44 antibody (TMAB-00368)

Dilution: 1 µg/Test;

Secondary Antibody (white blue line): Goat anti-mouse IgG-AF488

Dilution: 0.5 µg/Test.

Isotype control (orange line): Normal Mouse IgG

Protocol

The cells were incubated in 5% BSA to block non-specific protein-protein interactions for 30 min at room temperature. Cells stained with Primary Antibody for 30 min at room temperature. The secondary antibody used for 40 min at room temperature.

3. 25 µg total protein per Lane of various lysates probed with CD44 monoclonal antibody, unconjugated (TMAB-00368) at 1:1000 dilution and 4°C overnight incubation. Followed by conjugated secondary antibody incubation at RT for 60 min.

4. Paraformaldehyde-fixed, paraffin embedded Human Cervical Cancer; Antigen retrieval by boiling in sodium citrate buffer (pH6.0) for 15 min; The section was incubated with CD44 Monoclonal Antibody, Unconjugated (TMAB-00368) at 1:150 overnight at 4°C, followed by conjugation to the secondary antibody and DAB staining.

5. Paraformaldehyde-fixed, paraffin embedded Human Colon Cancer; Antigen retrieval by boiling in sodium citrate buffer (pH6.0) for 15 min; The section was incubated with CD44 Monoclonal Antibody, Unconjugated (TMAB-00368) at 1:150 overnight at 4°C, followed by conjugation to the secondary antibody and DAB staining.

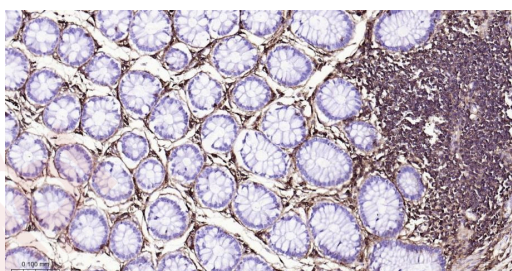
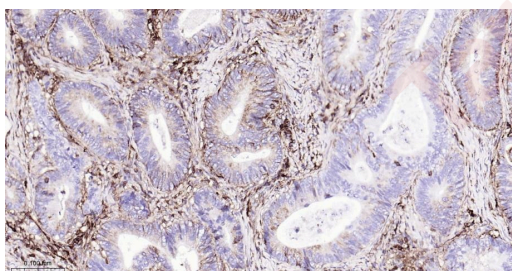
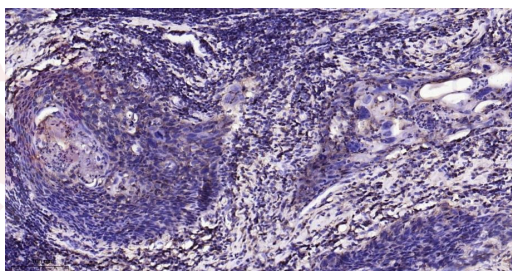
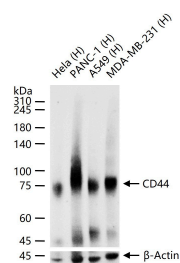
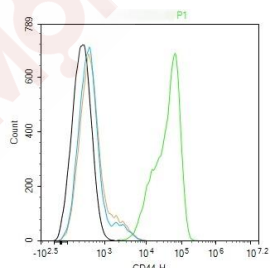
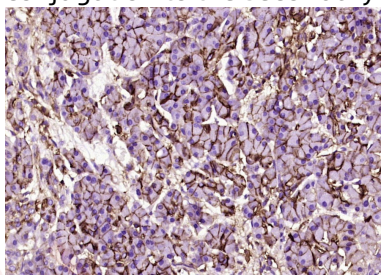
6. Paraformaldehyde-fixed, paraffin embedded Human Colon; Antigen retrieval by boiling in sodium citrate buffer (pH6.0) for 15 min; The section was incubated with CD44 Monoclonal Antibody, Unconjugated (TMAB-00368) at 1:150 overnight at 4°C, followed by conjugation to the secondary antibody and DAB staining.

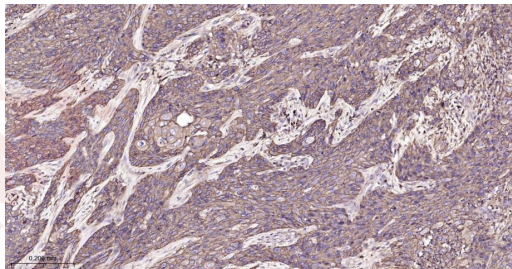
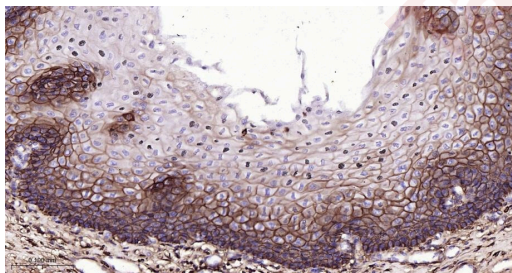
7. Paraformaldehyde-fixed, paraffin embedded Human Esophagus; Antigen retrieval by boiling in sodium citrate buffer (pH6.0) for 15 min; The section was incubated with CD44 Monoclonal Antibody, Unconjugated (TMAB-00368) at 1:150 overnight at 4°C, followed by conjugation to the secondary antibody and DAB staining.

8. Paraformaldehyde-fixed, paraffin embedded Human Esophagus Cancer; Antigen retrieval by

Verified Activity:

boiling in sodium citrate buffer (pH6.0) for 15 min; The section was incubated with CD44 Monoclonal Antibody, Unconjugated (TMAB-00368) at 1:150 overnight at 4°C, followed by conjugation to the secondary antibody and DAB staining.





Application: FCM,ICC/IF,IF,IHC-Fr,IHC-P,WB
Recommended: FCM=1 µg/Test; ICC/IF=1:50-200; IF=1:100-500; IHC-Fr=1:100-500; IHC-P=1:100-500; WB=1:500-2000

Properties

Stability & Storage: Store at -20°C or -80°C for 12 months. Avoid repeated freeze-thaw cycles.
Shipping: Shipping with blue ice.

Antigen Details

Immunogen: Recombinant Protein: human CD44
Antigen Species: Human
Gene ID: 960
Uniprot ID: P16070
Synonyms: HCELL;Pgp1;MC56;MDU2;IN;CSPG8;CDW44;MDU3;CD44 molecule (Indian blood group);MIC4;LHR;ECMR-III;HUTCH-I
Biology Area: Tumor biomarkers,CD markers,Adhesion,CD markers ELISA kits,T Lymphocytic Lineage,Dendritic Cell Lineage,Neutrophil Lineage,Surface Molecules

Research Background

The protein encoded by this gene is a cell-surface glycoprotein involved in cell-cell interactions, cell adhesion and migration. It is a receptor for hyaluronic acid (HA) and can also interact with other ligands, such as osteopontin, collagens, and matrix metalloproteinases (MMPs). This protein participates in a wide variety of cellular functions including lymphocyte activation, recirculation and homing, hematopoiesis, and tumor metastasis. Transcripts for this gene undergo complex alternative splicing that results in many functionally distinct isoforms, however, the full length nature of some of these variants has not been determined. Alternative splicing is the basis for the structural and functional diversity of this protein, and may be related to tumor metastasis. [provided by RefSeq, Jul 2008].

Inhibitor · Natural Compounds · Compound Libraries · Recombinant Proteins

This product is for Research Use Only · Not for Human or Veterinary or Therapeutic Use

Tel:781-999-4286 E_mail:info@targetmol.com Address:34 Washington Street,Wellesley Hills,MA 02481