

## Anti-CD41 Polyclonal Antibody

### Product Details

**Ig Type:** IgG  
**Reactivity:** Human (predicted:Mouse,Rat,Cow,Horse,Rabbit)  
**Molecular Weight:** Theoretical: 125 kDa. Actual: 125 kDa.  
**Purification:** Protein A purified

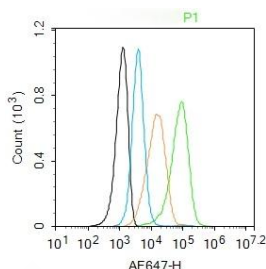
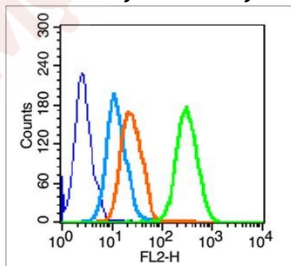
### Applications

1. Blank control (blue line): HL60 cells (fixed with 70% methanol (Overnight at 4°C)).  
 Primary Antibody (green line): Rabbit Anti-Integrin alpha 2b antibody (TMAB-00367), Dilution: 1 µg/10<sup>6</sup> cells;  
 Isotype Control Antibody (orange line): Rabbit IgG.  
 Secondary Antibody (white blue line): Goat anti-rabbit IgG-PE, Dilution: 1 µg/test.

2. Blank control: U937. Primary Antibody (green line): Rabbit Anti-CD41/Integrin alpha 2b antibody (TMAB-00367)

**Verified Activity:** Dilution: 1 µg/10<sup>6</sup> cells;  
 Isotype Control Antibody (orange line): Rabbit IgG.  
 Secondary Antibody: Goat anti-rabbit IgG-AF647  
 Dilution: 1 µg/test.  
**Protocol**

The cells were incubated in 5% BSA to block non-specific protein-protein interactions for 30 min at room temperature. Cells stained with Primary Antibody for 30 min at room temperature. The secondary antibody used for 40 min at room temperature.



**Application:** FCM  
**Recommended:** FCM: 1 µg /test

### Properties

Stability & Storage: Store at -20°C or -80°C for 12 months. Avoid repeated freeze-thaw cycles.

Shipping: Shipping with blue ice.

---

### Antigen Details

Immunogen: KLH conjugated synthetic peptide: human Integrin alpha 2b heavy chain

Antigen Species: Human

Gene ID: 3674

Uniprot ID: P08514

Synonyms: ITGA 2B; GPIIb; Platelet membrane glycoprotein IIb; ITGAB; Integrin, alpha 2b(platelet glycoprotein IIb of IIb/IIIa complex, antigen CD41); Platelet fibrinogen receptor alpha; GPalpha IIb; platelet glycoprotein IIb of IIb/IIIa complex; HPA3; Platelet fibrinogen receptor alpha subunit; CD 41; GTA; Platelet specific antigen bak; GP2b; CD41 antigen; CD41a; ITA2B; Integrin alpha IIb precursor; CD41b; Integrin alpha IIb; GPalphaIIb; Integrin alpha 2b

Biology Area: Integrins, Platelets, Platelets, Alpha, Murine Lineage Negative, Thrombocytic Lineage

---

### Research Background

This gene encodes a member of the integrin alpha chain family of proteins. The encoded preproprotein is proteolytically processed to generate light and heavy chains that associate through disulfide linkages to form a subunit of the alpha-IIb/beta-3 integrin cell adhesion receptor. This receptor plays a crucial role in the blood coagulation system, by mediating platelet aggregation. Mutations in this gene are associated with platelet-type bleeding disorders, which are characterized by a failure of platelet aggregation, including Glanzmann thrombasthenia. [provided by RefSeq, Jan 2016]

**Inhibitor · Natural Compounds · Compound Libraries · Recombinant Proteins**

This product is for Research Use Only · Not for Human or Veterinary or Therapeutic Use

Tel: 781-999-4286 E\_mail: info@targetmol.com Address: 34 Washington Street, Wellesley Hills, MA 02481