

## Anti-CD31 Antibody (2K688)

## Product Details

Ig Type:	IgG1
Reactivity:	Human
Molecular Weight:	Theoretical: 78 kDa. Actual: 130 kDa.
Clone:	2K688
Purification:	Protein A purified

## Applications

## Verified Activity:

1. Paraformaldehyde-fixed, paraffin embedded Human Liver Cancer; Antigen retrieval by boiling in sodium citrate buffer (pH6.0) for 15 min; Antibody incubation with CD31 Monoclonal Antibody, Unconjugated (TMAB-00354) at 1:200 overnight at 4°C. Followed by conjugated Goat Anti-Rabbit IgG antibody (green), DAPI (blue) was used to stain the cell nucleus.
2. Paraformaldehyde-fixed, paraffin embedded Human Colon Cancer; Antigen retrieval by boiling in sodium citrate buffer (pH6.0) for 15 min; Antibody incubation with CD31 Monoclonal Antibody, Unconjugated (TMAB-00354) at 1:200 overnight at 4°C. Followed by conjugated Goat Anti-Rabbit IgG antibody (green), DAPI (blue) was used to stain the cell nucleus.
3. Paraformaldehyde-fixed, paraffin embedded Human Tonsil; Antigen retrieval by boiling in sodium citrate buffer (pH6.0) for 15 min; Antibody incubation with CD31 Monoclonal Antibody, Unconjugated (TMAB-00354) at 1:200 overnight at 4°C. Followed by conjugated Goat Anti-Rabbit IgG antibody (green), DAPI (blue) was used to stain the cell nucleus.
4. Paraformaldehyde-fixed, paraffin embedded Human Liver; Antigen retrieval by boiling in sodium citrate buffer (pH6.0) for 15 min; Antibody incubation with CD31 Monoclonal Antibody, Unconjugated (TMAB-00354) at 1:200 overnight at 4°C. Followed by conjugated Goat Anti-Rabbit IgG antibody (green), DAPI (blue) was used to stain the cell nucleus.
5. Paraformaldehyde-fixed, paraffin embedded Human Kidney; Antigen retrieval by boiling in sodium citrate buffer (pH6.0) for 15 min; Antibody incubation with CD31 Monoclonal Antibody, Unconjugated (TMAB-00354) at 1:200 overnight at 4°C. Followed by conjugated Goat Anti-Rabbit IgG antibody (green), DAPI (blue) was used to stain the cell nucleus.
6. Paraformaldehyde-fixed, paraffin embedded Human Liver Cancer; Antigen retrieval by boiling in sodium citrate buffer (pH6.0) for 15 min; Antibody incubation with CD31 Monoclonal Antibody, Unconjugated (TMAB-00354) at 1:200 overnight at 4°C. Followed by conjugated Goat Anti-Rabbit IgG antibody (Red), DAPI (blue) was used to stain the cell nucleus.
7. Paraformaldehyde-fixed, paraffin embedded Human Colon Cancer; Antigen retrieval by boiling in sodium citrate buffer (pH6.0) for 15 min; Antibody incubation with CD31 Monoclonal Antibody, Unconjugated (TMAB-00354) at 1:200 overnight at 4°C. Followed by conjugated Goat Anti-Rabbit IgG antibody (Red), DAPI (blue) was used to stain the cell nucleus.
8. Paraformaldehyde-fixed, paraffin embedded Human Liver; Antigen retrieval by boiling in sodium citrate buffer (pH6.0) for 15 min; Antibody incubation with CD31 Monoclonal Antibody, Unconjugated (TMAB-00354) at 1:200 overnight at 4°C. Followed by conjugated Goat Anti-Rabbit IgG antibody (Red), DAPI (blue) was used to stain the cell nucleus.
9. 25 µg total protein per Lane of various lysates probed with CD31 monoclonal antibody, unconjugated (TMAB-00354) at 1:1000 dilution and 4°C overnight incubation. Followed by conjugated secondary antibody incubation at RT for 60 min.
10. The THP-1 (H) cells were incubated in 5% BSA to block non-specific protein-protein

interactions (30 min at room temperature). Primary Antibody (green): Mouse Anti-CD31 antibody (TMAB-00354): 0.5  $\mu\text{g}/10^6$  cells; Secondary Antibody (white blue): Goat anti-Mouse IgG-FITC for 15 min; The section was incubated with CD31 Monoclonal Antibody, Unconjugated (ascites of TMAB-00354) at 1:1500 overnight at 4°C, followed by conjugation to the secondary antibody and DAB staining.

12. Paraformaldehyde-fixed, paraffin embedded Human Liver Cancer; Antigen retrieval by boiling in sodium citrate buffer (pH6.0) for 15 min; The section was incubated with CD31 Monoclonal Antibody, Unconjugated (ascites of TMAB-00354) at 1:1500 overnight at 4°C, followed by conjugation to the secondary antibody and DAB staining.

13. Paraformaldehyde-fixed, paraffin embedded Human Colon Cancer; Antigen retrieval by boiling in sodium citrate buffer (pH6.0) for 15 min; The section was incubated with CD31 Monoclonal Antibody, Unconjugated (ascites of TMAB-00354) at 1:1500 overnight at 4°C, followed by conjugation to the secondary antibody and DAB staining.

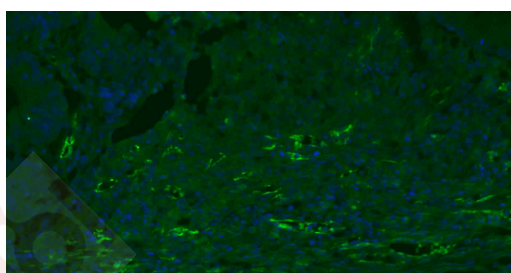
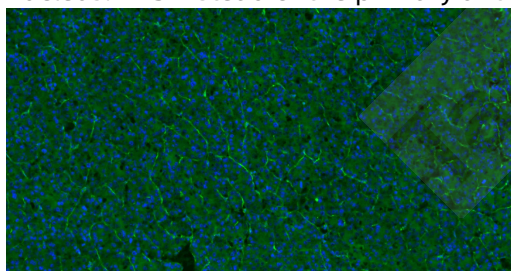
14. Paraformaldehyde-fixed, paraffin embedded Human Tonsil; Antigen retrieval by boiling in sodium citrate buffer (pH6.0) for 15 min; The section was incubated with CD31 Monoclonal Antibody, Unconjugated (ascites of TMAB-00354) at 1:1500 overnight at 4°C, followed by conjugation to the secondary antibody and DAB staining.

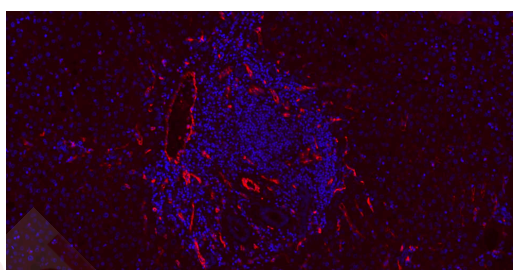
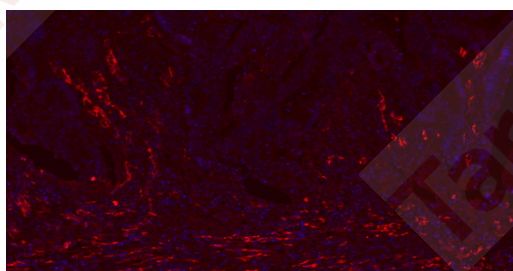
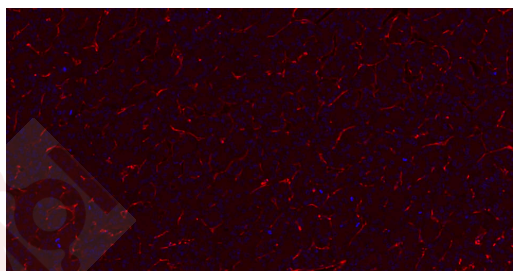
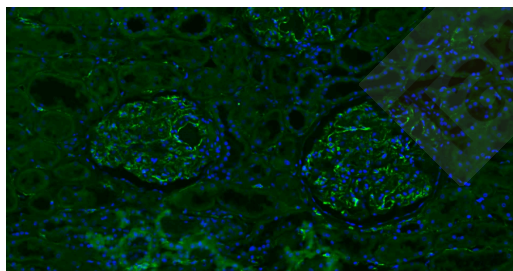
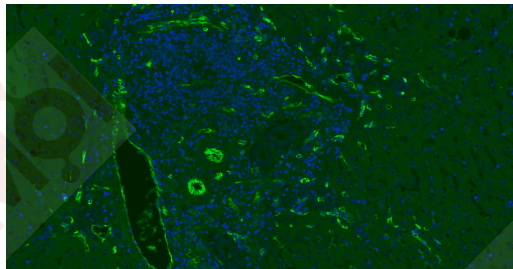
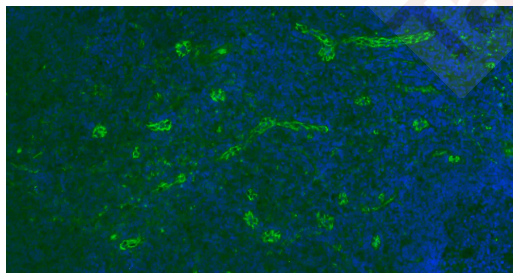
15. Paraformaldehyde-fixed, paraffin embedded Human Liver; Antigen retrieval by boiling in sodium citrate buffer (pH6.0) for 15 min; The section was incubated with CD31 Monoclonal Antibody, Unconjugated (ascites of TMAB-00354) at 1:1500 overnight at 4°C, followed by conjugation to the secondary antibody and DAB staining.

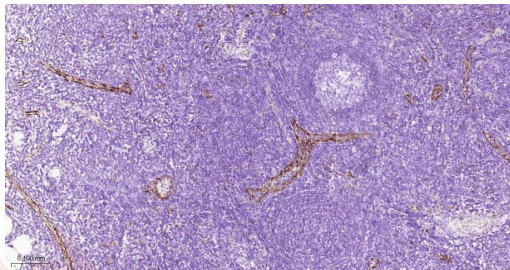
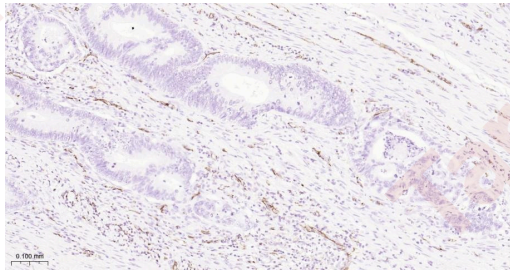
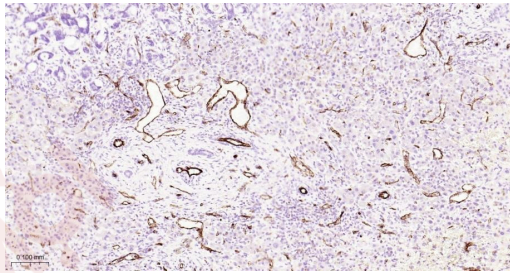
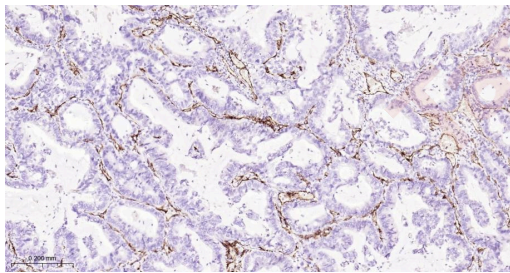
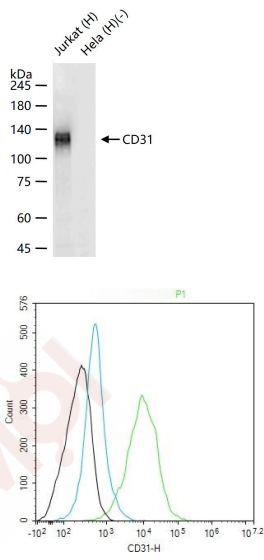
16. Paraformaldehyde-fixed, paraffin embedded Human Kidney; Antigen retrieval by boiling in sodium citrate buffer (pH6.0) for 15 min; The section was incubated with CD31 Monoclonal Antibody, Unconjugated (ascites of TMAB-00354) at 1:1500 overnight at 4°C, followed by conjugation to the secondary antibody and DAB staining.

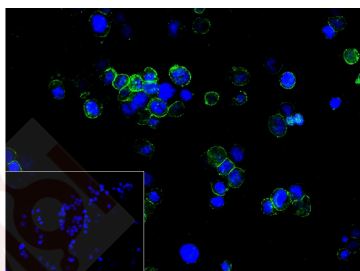
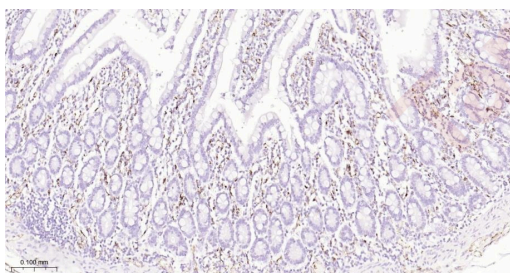
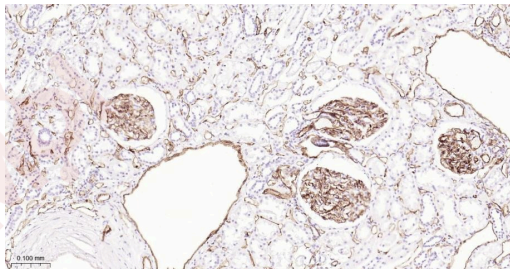
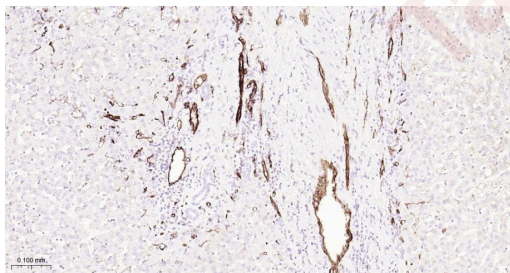
17. Paraformaldehyde-fixed, paraffin embedded Human Duodenum; Antigen retrieval by boiling in sodium citrate buffer (pH6.0) for 15 min; The section was incubated with CD31 Monoclonal Antibody, Unconjugated (ascites of TMAB-00354) at 1:1500 overnight at 4°C, followed by conjugation to the secondary antibody and DAB staining.

18. 4% Paraformaldehyde-fixed THP-1 (H) cell; Antibody incubation with (CD31) monoclonal Antibody, unconjugated (TMAB-00354) 1:200, 90 min at 37°C; followed by conjugated Goat Anti-Mouse IgG antibody (green) at 37°C for 90 min, DAPI (blue) was used to stain the cell nucleus. PBS instead of the primary antibody was used as the blank control.









Application: FCM, ICC/IF, IHC-Fr, IHC-P, WB

Recommended FCM=1 µg/Test; ICC/IF=1:200-800; IF=1:200-2000; IHC-Fr=1:200-2000; IHC-P=1:200-2000; WB=1:1000-10000

### Properties

Stability & Storage: Store at -20°C or -80°C for 12 months. Avoid repeated freeze-thaw cycles.

Shipping: Shipping with blue ice.

### Antigen Details

Immunogen: Recombinant Protein: human CD31 28-601/727aa (C-6x His-Tag)

Antigen Species: Human

Gene ID: 5175

Uniprot ID: P16284

Synonyms: CD31; FLJ34100; EndoCAM; FLJ58394; PECAM-1; GPIIA<sup>1</sup>; PECA1

### Research Background

The protein encoded by this gene is found on the surface of platelets, monocytes, neutrophils, and some types of T-

## A DRUG SCREENING EXPERT

---

cells, and makes up a large portion of endothelial cell intercellular junctions. The encoded protein is a member of the immunoglobulin superfamily and is likely involved in leukocyte migration, angiogenesis, and integrin activation. [provided by RefSeq, May 2010]

**Inhibitor · Natural Compounds · Compound Libraries · Recombinant Proteins**

This product is for Research Use Only · Not for Human or Veterinary or Therapeutic Use

Tel: 781-999-4286    E\_mail: info@targetmol.com    Address: 34 Washington Street, Wellesley Hills, MA 02481