

Anti-CD3 epsilon/CD3e Antibody (9X587)

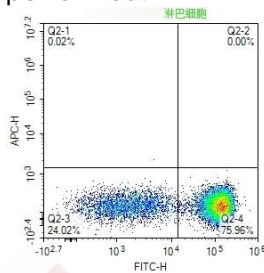
Product Details

Ig Type:	Mouse IgG2a, k
Reactivity:	Human
Molecular Weight:	Theoretical: 20 kDa. Actual: 20 kDa.
Clone:	9X587
Purification:	Protein G purified

Applications

Verified Activity:

scatter diagram showing peripheral blood lymphocytes stained with CD3 The cells were incubated with the antibody (TMAB-00353, 1 µg/Test) for 30 min at room temperature. The secondary antibody used for 40 min at room temperature.Acquisition of >20,000 events was performed.



Application:	FCM
Recommended	FCM: 1ug/Test

Properties

Stability & Storage:	Store at -20°C or -80°C for 12 months. Avoid repeated freeze-thaw cycles.
Shipping:	Shipping with blue ice.

Antigen Details

Immunogen:	KLH conjugated synthetic peptide: human CD3
Antigen Species:	Human
Gene ID:	916
Uniprot ID:	P07766
Synonyms:	CD3e molecule, epsilon (CD3-TCR complex);CD3 ε/CD3e;CD3e molecule, ε (CD3-TCR complex)
Biology Area:	Regulatory T Cells,CD,cd3,Human Lineage Negative

Research Background

CD3e molecule, epsilon is also known as CD3E, is a T-cell surface single-pass type I membrane glycoprotein. CD3E contains 1 Ig-like (immunoglobulin-like) domain and 1 ITAM domain. CD3E, together with CD3-gamma, CD3-delta and CD3-zeta, and the T-cell receptor alpha/beta and gamma/delta heterodimers, forms the T cell receptor-CD3 complex. This complex plays an important role in coupling antigen recognition to several intracellular signal-

A DRUG SCREENING EXPERT

transduction pathways. The genes encoding the epsilon, gamma and delta polypeptides are located in the same cluster on chromosome 11. The epsilon polypeptide plays an essential role in T-cell development. CD3E plays an essential role in T-cell development, and defects in CD3E gene cause severe immunodeficiency. CD3E gene has also been linked to a susceptibility to type I diabetes in women. CD3E has been shown to interact with TOP2B, CD3EAP and NCK2.

Inhibitor · Natural Compounds · Compound Libraries · Recombinant Proteins

This product is for Research Use Only· Not for Human or Veterinary or Therapeutic Use

Tel:781-999-4286 E_mail:info@targetmol.com Address:34 Washington Street,Wellesley Hills,MA 02481