

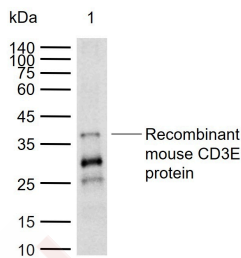
Anti-CD3 epsilon/CD3e Polyclonal Antibody

Product Details

Ig Type: IgG
Reactivity: Mouse (predicted:Pig)
Molecular Weight: Theoretical: 20 kDa. Actual: 36 kDa.
Purification: Protein A purified

Applications

Sample:
Lane 1: Recombinant mouse CD3E protein, C-mFc (HEK293)
Verified Activity: Primary: Anti-CD3 (TMAB-00351) at 1/1000 dilution
Secondary: IRDye800CW Goat Anti-Rabbit IgG at 1/20000 dilution
Predicted band size: 20 kDa
Observed band size: 36 kDa



Application: WB
Recommended WB: 1:500-2000

Properties

Stability & Storage: Store at -20°C or -80°C for 12 months. Avoid repeated freeze-thaw cycles.
Shipping: Shipping with blue ice.

Antigen Details

Immunogen: KLH conjugated synthetic peptide: pig CD3
Antigen Species: Pig
Synonyms: T3e;CD3;CD3epsilon
Biology Area: Regulatory T Cells,CD,cd3,Human Lineage Negative

Research Background

CD3e molecule, epsilon is also known as CD3E, is a T-cell surface single-pass type I membrane glycoprotein. CD3E contains 1 Ig-like (immunoglobulin-like) domain and 1 ITAM domain. CD3E, together with CD3-gamma, CD3-delta and CD3-zeta, and the T-cell receptor alpha/beta and gamma/delta heterodimers, forms the T cell receptor-CD3 complex. This complex plays an important role in coupling antigen recognition to several intracellular signal-transduction pathways. The genes encoding the epsilon, gamma and delta polypeptides are located in the same cluster on chromosome 11. The epsilon polypeptide plays an essential role in T-cell development. CD3E plays an

A DRUG SCREENING EXPERT

essential role in T-cell development, and defects in CD3E gene cause severe immunodeficiency. CD3E gene has also been linked to a susceptibility to type I diabetes in women. CD3E has been shown to interact with TOP2B, CD3EAP and NCK2.

Inhibitor · Natural Compounds · Compound Libraries · Recombinant Proteins

This product is for Research Use Only · Not for Human or Veterinary or Therapeutic Use

Tel:781-999-4286 E_mail:info@targetmol.com Address:34 Washington Street,Wellesley Hills,MA 02481