

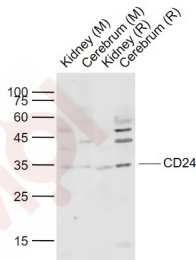
Anti-CD24 Polyclonal Antibody 2

Product Details

Ig Type: IgG
Reactivity: Human,Mouse,Rat
Molecular Weight: Theoretical: 3/8 kDa. Actual: 35 kDa.
Purification: Protein A purified

Applications

Sample:
 Lane 1: Kidney (Mouse) Lysate at 40 µg
 Lane 2: Cerebrum (Mouse) Lysate at 40 µg
 Lane 3: Kidney (Rat) Lysate at 40 µg
 Lane 4: Cerebrum (Rat) Lysate at 40 µg
Verified Activity:
 Primary:
 Anti-CD24 (TMAB-00348) at 1/1000 dilution
 Secondary: IRDye800CW Goat Anti-Rabbit IgG at 1/20000 dilution
 Predicted band size: 35 kDa
 Observed band size: 35 kDa



Application: WB
Recommended: WB: 1:500-2000

Properties

Stability & Storage: Store at -20°C or -80°C for 12 months. Avoid repeated freeze-thaw cycles.
Shipping: Shipping with blue ice.

Antigen Details

Immunogen: KLH conjugated synthetic peptide: human CD24
Antigen Species: Human
Gene ID: 100133941
Uniprot ID: P25063
Synonyms: CD24A;FLJ22950;CD 24;FLJ43543;MGC75043;CD24 molecule
Biology Area: Cellular metabolic process,Response to hypoxia,Tumor antigens,CD,Hypoxia,Neural Stem Cell marker,Human Lineage Negative,B Lymphocytic Lineage,T Lymphocytic Lineage,Dendritic Cell Lineage,Erythrocytic Lineage,Monocytic Lineage,Neutrophil Lineage

Research Background

This gene encodes a sialoglycoprotein that is expressed on mature granulocytes and B cells and modulates growth and differentiation signals to these cells. The precursor protein is cleaved to a short 32 amino acid mature peptide which is anchored via a glycosyl phosphatidylinositol (GPI) link to the cell surface. This gene was missing from previous genome assemblies, but is properly located on chromosome 6. Non-transcribed pseudogenes have been designated on chromosomes 1, 15, 20, and Y. Alternative splicing results in multiple transcript variants. [provided by RefSeq, Apr 2014]

Inhibitor · Natural Compounds · Compound Libraries · Recombinant Proteins

This product is for Research Use Only · Not for Human or Veterinary or Therapeutic Use

Tel:781-999-4286 E_mail:info@targetmol.com Address:34 Washington Street,Wellesley Hills,MA 02481