

Anti-CD24 Polyclonal Antibody

Product Details

Ig Type: IgG
Reactivity: Human,Rat (predicted:Mouse)
Molecular Weight: Theoretical: 8 kDa. Actual: 35 kDa.
Purification: Protein A purified

Applications

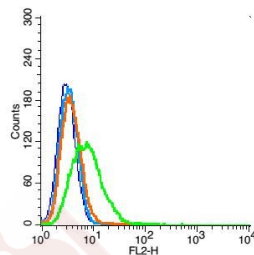
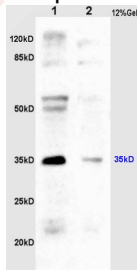
1. Sample:
 Colon carcinoma (Human) lysate at 30 µg;
 Heart (Rat) lysates, 30 µg;
Primary: Anti-CD24 (TMAB-00347) at 1:200 dilution;
Secondary: HRP conjugated Goat-Anti-Rabbit IgG (secondary antibody) at 1: 3000;
 Predicted band size: 8 kDa
 Observed band size: 35 kDa

Verified Activity:

2. Blank control: A549 (blue). **Primary Antibody:** Rabbit Anti-CD24 antibody (TMAB-00347),
 Dilution: 1 µg in 100 µL 1X PBS containing 0.5% BSA; **Isotype Control Antibody:** Rabbit IgG
 (orange),used under the same conditions); **Secondary Antibody:** Goat anti-rabbit IgG-Pe (white
 blue), Dilution: 1:200 in 1 X PBS containing 0.5% BSA.

Protocol

The cells were fixed with 2% paraformaldehyde (10 min). Primary antibody (TMAB-00347, 1
 µg/1x10⁶ cells) were incubated for 30 min on the ice, followed by 1 X PBS containing 0.5% BSA
 + 10% goat serum (15 min) to block non-specific protein-protein interactions. Then the Goat
 Anti-rabbit IgG/PE antibody was added into the blocking buffer mentioned above to react with
 the primary antibody at 1/200 dilution for 30 min on ice.



Application: FCM,WB
Recommended: WB: 1:500-2000; FCM: 1ug/Test

Properties

Stability & Storage: Store at -20°C or -80°C for 12 months. Avoid repeated freeze-thaw cycles.

Shipping: Shipping with blue ice.

Antigen Details

Immunogen: KLH conjugated synthetic peptide: human CD24 Propeptide

Antigen Species: Human

Gene ID: 100133941

Uniprot ID: P25063

Synonyms: FLJ22950;CD24 molecule;CD24A;FLJ43543;MGC75043;CD 24

Biology Area: Cellular metabolic process,Response to hypoxia,Tumor antigens,CD,Hypoxia,Neural Stem Cell marker,Human Lineage Negative,B Lymphocytic Lineage,T Lymphocytic Lineage,Dendritic Cell Lineage,Erythrocytic Lineage,Monocytic Lineage,Neutrophil Lineage

Research Background

This gene encodes a sialoglycoprotein that is expressed on mature granulocytes and B cells and modulates growth and differentiation signals to these cells. The precursor protein is cleaved to a short 32 amino acid mature peptide which is anchored via a glycosyl phosphatidylinositol (GPI) link to the cell surface. This gene was missing from previous genome assemblies, but is properly located on chromosome 6. Non-transcribed pseudogenes have been designated on chromosomes 1, 15, 20, and Y. Alternative splicing results in multiple transcript variants. [provided by RefSeq, Apr 2014]

Inhibitor · Natural Compounds · Compound Libraries · Recombinant Proteins

This product is for Research Use Only · Not for Human or Veterinary or Therapeutic Use

Tel:781-999-4286 E_mail:info@targetmol.com Address:34 Washington Street,Wellesley Hills,MA 02481