

Anti-CD23 Antibody (4R869)

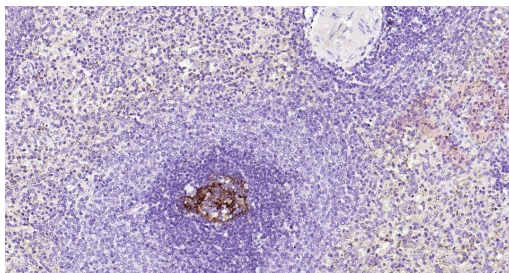
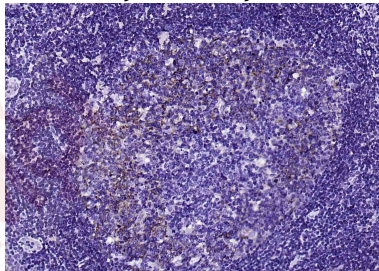
Product Details

Ig Type:	IgG
Reactivity:	Human
Molecular Weight:	Theoretical: 36 kDa.
Clone:	4R869
Purification:	Protein A purified

Applications

Verified Activity:

1. Paraformaldehyde-fixed, paraffin embedded (human tonsil); Antigen retrieval by boiling in sodium citrate buffer (pH6.0) for 15 min; Block endogenous peroxidase by 3% hydrogen peroxide for 20 min; Blocking buffer (normal goat serum) at 37°C for 30 min; Antibody incubation with (CD23) Monoclonal Antibody, Unconjugated (TMAB-00346) at 1:200 overnight at 4°C, followed by operating according to SP Kit (Rabbit) instructions and DAB staining.
2. Paraformaldehyde-fixed, paraffin embedded Human Spleen; Antigen retrieval by boiling in EDTA buffer (pH9.0) for 15 min; Antibody incubation with CD23 Monoclonal Antibody, Unconjugated (TMAB-00346) at 1:200 overnight at 4°C, followed by conjugation to the secondary antibody and DAB staining.



Application: IF,IHC-Fr,IHC-P

Recommended IHC-P: 1:100-500; IHC-Fr: 1:100-500; IF: 1:100-500

Properties

Stability & Storage: Store at -20°C or -80°C for 12 months. Avoid repeated freeze-thaw cycles.

Shipping: Shipping with blue ice.

Antigen Details

Immunogen: KLH conjugated synthetic peptide: human CD23

Antigen Species: Human

Gene ID: 2208

Uniprot ID: P06734

Synonyms: Fcεr2a;Fc fragment of IgE receptor II;FCER2

Biology Area: CD,Receptors,B Lymphocytic Lineage

Research Background

The protein encoded by this gene is a B-cell specific antigen, and a low-affinity receptor for IgE. It has essential roles in B cell growth and differentiation, and the regulation of IgE production. This protein also exists as a soluble secreted form, then functioning as a potent mitogenic growth factor. Alternatively spliced transcript variants encoding different isoforms have been described for this gene.[provided by RefSeq, Jul 2011]

Inhibitor · Natural Compounds · Compound Libraries · Recombinant Proteins

This product is for Research Use Only · Not for Human or Veterinary or Therapeutic Use

Tel:781-999-4286 E_mail:info@targetmol.com Address:34 Washington Street,Wellesley Hills,MA 02481