

Anti-CD163 Antibody (5V810)

Product Details

Ig Type:	IgG
Reactivity:	Human,Mouse,Rat
Molecular Weight:	Theoretical: 130 kDa. Actual: 170 kDa.
Clone:	5V810
Purification:	Protein A purified

Applications

Verified Activity:

1. 25 µg total protein per Lane of various lysates probed with CD163 monoclonal antibody, unconjugated (TMAB-00339) at 1:1000 dilution and 4°C overnight incubation. Followed by conjugated secondary antibody incubation at RT for 60 min.
2. Paraformaldehyde-fixed, paraffin embedded Mouse Lung; Antigen retrieval by boiling in sodium citrate buffer (pH6.0) for 15 min; Antibody incubation with CD163 Monoclonal Antibody, Unconjugated (TMAB-00339) at 1:200 overnight at 4°C, followed by conjugation to the secondary antibody and DAB staining.
3. Paraformaldehyde-fixed, paraffin embedded Rat Lung; Antigen retrieval by boiling in sodium citrate buffer (pH6.0) for 15 min; Antibody incubation with CD163 Monoclonal Antibody, Unconjugated (TMAB-00339) at 1:200 overnight at 4°C, followed by conjugation to the secondary antibody and DAB staining.
4. Paraformaldehyde-fixed, paraffin embedded Human Lung; Antigen retrieval by boiling in sodium citrate buffer (pH6.0) for 15 min; Antibody incubation with CD163 Monoclonal Antibody, Unconjugated (TMAB-00339) at 1:200 overnight at 4°C, followed by conjugation to the secondary antibody and DAB staining.
5. Paraformaldehyde-fixed, paraffin embedded Human Lung Cancer; Antigen retrieval by boiling in sodium citrate buffer (pH6.0) for 15 min; Antibody incubation with CD163 Monoclonal Antibody, Unconjugated (TMAB-00339) at 1:200 overnight at 4°C, followed by conjugation to the secondary antibody and DAB staining.
6. Paraformaldehyde-fixed, paraffin embedded Mouse Liver; Antigen retrieval by boiling in sodium citrate buffer (pH6.0) for 15 min; Antibody incubation with CD163 Monoclonal Antibody, Unconjugated (TMAB-00339) at 1:200 overnight at 4°C, followed by conjugation to the secondary antibody and DAB staining.
7. Paraformaldehyde-fixed, paraffin embedded Rat Liver; Antigen retrieval by boiling in sodium citrate buffer (pH6.0) for 15 min; Antibody incubation with CD163 Monoclonal Antibody, Unconjugated (TMAB-00339) at 1:200 overnight at 4°C, followed by conjugation to the secondary antibody and DAB staining.
8. Paraformaldehyde-fixed, paraffin embedded Human Liver; Antigen retrieval by boiling in sodium citrate buffer (pH6.0) for 15 min; Antibody incubation with CD163 Monoclonal Antibody, Unconjugated (TMAB-00339) at 1:200 overnight at 4°C, followed by conjugation to the secondary antibody and DAB staining.
9. Paraformaldehyde-fixed, paraffin embedded Rat Spleen; Antigen retrieval by boiling in sodium citrate buffer (pH6.0) for 15 min; Antibody incubation with CD163 Monoclonal Antibody, Unconjugated (TMAB-00339) at 1:200 overnight at 4°C, followed by conjugation to the secondary antibody and DAB staining.
10. Paraformaldehyde-fixed, paraffin embedded Human Spleen; Antigen retrieval by boiling in

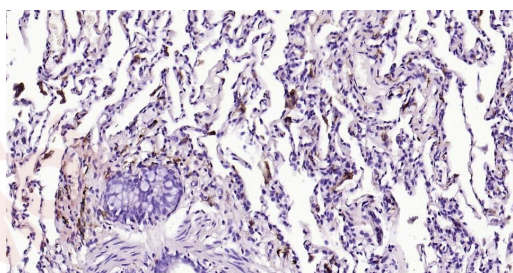
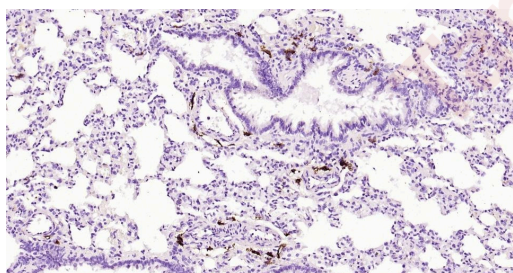
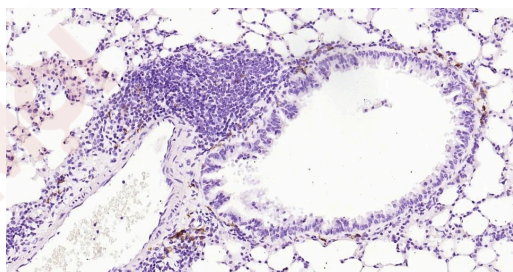
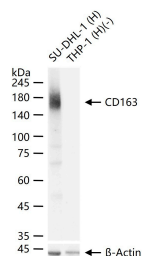
sodium citrate buffer (pH6.0) for 15 min; Antibody incubation with CD163 Monoclonal Antibody, Unconjugated (TMAB-00339) at 1:200 overnight at 4°C, followed by conjugation to the secondary antibody and DAB staining.

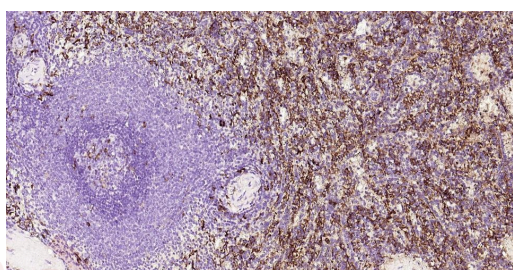
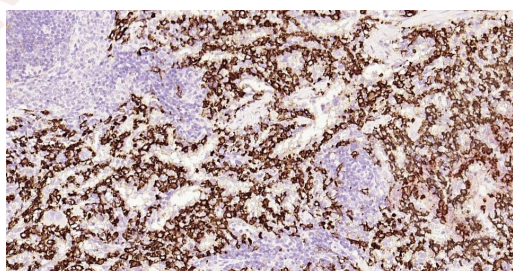
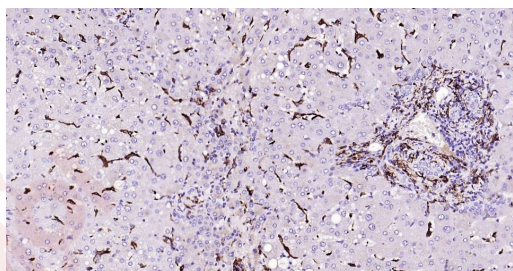
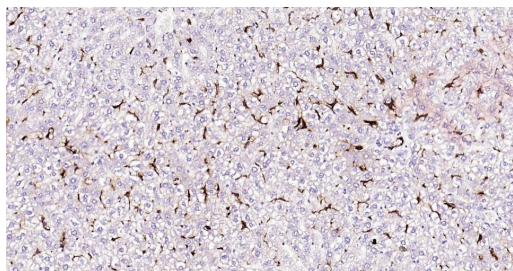
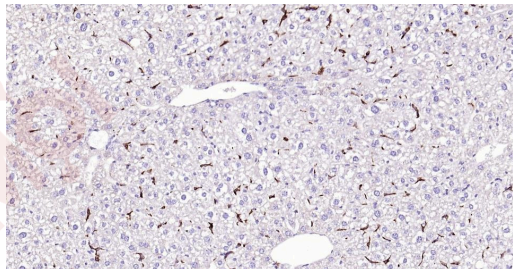
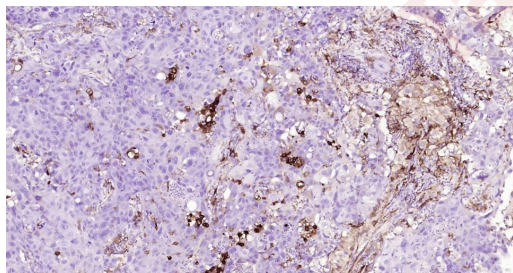
11. Paraformaldehyde-fixed, paraffin embedded Rat Placenta; Antigen retrieval by boiling in sodium citrate buffer (pH6.0) for 15 min; Antibody incubation with CD163 Monoclonal Antibody, Unconjugated (TMAB-00339) at 1:200 overnight at 4°C, followed by conjugation to the secondary antibody and DAB staining.

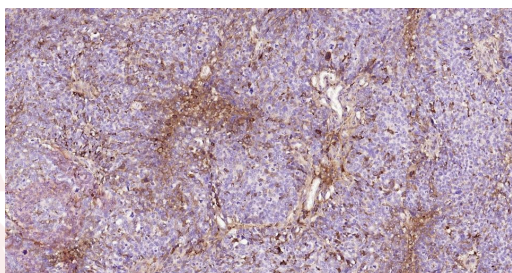
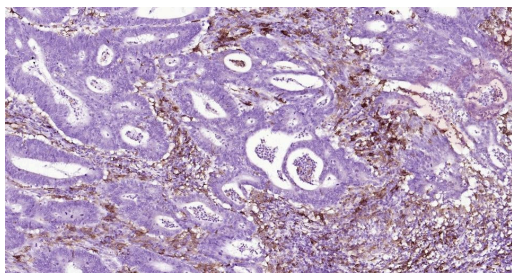
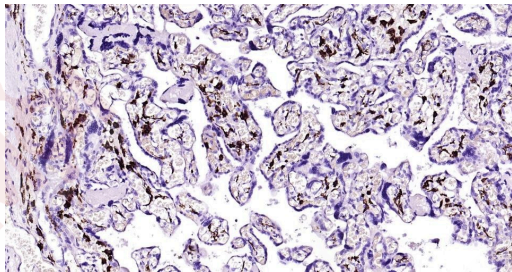
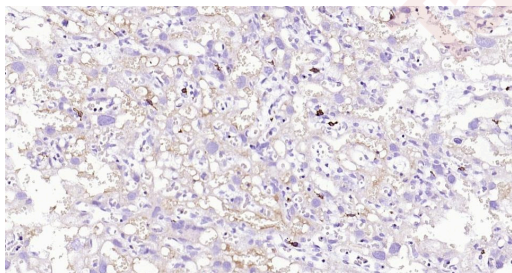
12. Paraformaldehyde-fixed, paraffin embedded Human Placenta; Antigen retrieval by boiling in sodium citrate buffer (pH6.0) for 15 min; Antibody incubation with CD163 Monoclonal Antibody, Unconjugated (TMAB-00339) at 1:200 overnight at 4°C, followed by conjugation to the secondary antibody and DAB staining.

13. Paraformaldehyde-fixed, paraffin embedded Human Colon Cancer; Antigen retrieval by boiling in sodium citrate buffer (pH6.0) for 15 min; Antibody incubation with CD163 Monoclonal Antibody, Unconjugated (TMAB-00339) at 1:200 overnight at 4°C, followed by conjugation to the secondary antibody and DAB staining.

14. Paraformaldehyde-fixed, paraffin embedded Human Ovarian Cancer; Antigen retrieval by boiling in sodium citrate buffer (pH6.0) for 15 min; Antibody incubation with CD163 Monoclonal Antibody, Unconjugated (TMAB-00339) at 1:200 overnight at 4°C, followed by conjugation to the secondary antibody and DAB staining.







Application: IF,IHC-Fr,IHC-P,WB

Recommended IF=1:200-800; IHC-Fr=1:200-800; IHC-P=1:200-800; WB=1:500-2000

Properties

Stability & Storage: Store at -20°C or -80°C for 12 months. Avoid repeated freeze-thaw cycles.

Shipping: Shipping with blue ice.

Antigen Details

Immunogen: KLH conjugated synthetic peptide: human CD163

Antigen Species: Human

Gene ID: 9332

Uniprot ID: Q86VB7

Synonyms: RM3/1;M130;CD163;HbSR;sCD163;CD163 molecule;MM130;SCAR11;GHI/61

Biology Area: Innate and adaptive immunity,Myeloid Cells,Macrophage / Inflamm.

Research Background

The protein encoded by this gene is a member of the scavenger receptor cysteine-rich (SRCR) superfamily, and is exclusively expressed in monocytes and macrophages. It functions as an acute phase-regulated receptor involved in the clearance and endocytosis of hemoglobin/haptoglobin complexes by macrophages, and may thereby protect tissues from free hemoglobin-mediated oxidative damage. This protein may also function as an innate immune sensor for bacteria and inducer of local inflammation. Alternatively spliced transcript variants encoding different isoforms have been described for this gene. [provided by RefSeq, Aug 2011]

Inhibitor · Natural Compounds · Compound Libraries · Recombinant Proteins

This product is for Research Use Only · Not for Human or Veterinary or Therapeutic Use

Tel:781-999-4286 E_mail:info@targetmol.com Address:34 Washington Street,Wellesley Hills,MA 02481