

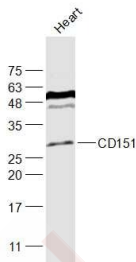
## Anti-CD151 Polyclonal Antibody

### Product Details

Ig Type:	IgG
Reactivity:	Human, Mouse (predicted: Rat, Chicken, Cow, Horse)
Molecular Weight:	Theoretical: 28 kDa. Actual: 28 kDa.
Purification:	Protein A purified

### Applications

Sample:	Heart (Mouse) Lysate at 40 µg
Verified Activity:	Primary: Anti-CD151 (TMAB-00335) at 1/1000 dilution Secondary: IRDye800CW Goat Anti-Rabbit IgG at 1/20000 dilution Predicted band size: 28 kDa Observed band size: 28 kDa



Application:	WB
Recommended	WB: 1:500-2000

### Properties

Stability & Storage:	Store at -20°C or -80°C for 12 months. Avoid repeated freeze-thaw cycles.
Shipping:	Shipping with blue ice.

### Antigen Details

Immunogen:	KLH conjugated synthetic peptide: human CD151
Antigen Species:	Human
Gene ID:	977
Uniprot ID:	P48509
Synonyms:	PETA-3; Platelet-endothelial tetraspan antigen 3; Tetraspanin24; TSPAN24; MER2; Platelet endothelial tetraspan antigen 3; CD151 antigen; CD151; Tspan-24; Membrane glycoprotein SFA1; SFA1; Tetraspanin-24; RAPH; CD151 molecule; SFA 1; PETA3; GP27
Biology Area:	Endothelial Cell Markers, Endothelial

### Research Background

The protein encoded by this gene is a member of the transmembrane 4 superfamily, also known as the tetraspanin family. Most of these members are cell-surface proteins that are characterized by the presence of four hydrophobic

## A DRUG SCREENING EXPERT

---

domains. The proteins mediate signal transduction events that play a role in the regulation of cell development, activation, growth and motility. This encoded protein is a cell surface glycoprotein that is known to complex with integrins and other transmembrane 4 superfamily proteins. It is involved in cellular processes including cell adhesion and may regulate integrin trafficking and/or function. This protein enhances cell motility, invasion and metastasis of cancer cells. Multiple alternatively spliced transcript variants that encode the same protein have been described for this gene. [provided by RefSeq, Jul 2008].

**Inhibitor · Natural Compounds · Compound Libraries · Recombinant Proteins**

This product is for Research Use Only · Not for Human or Veterinary or Therapeutic Use

Tel:781-999-4286 E\_mail:info@targetmol.com Address:34 Washington Street,Wellesley Hills,MA 02481